

Sunda EasyFix



Sunda EasyFix Acoustic Self-Adhesive Wall Panel

Uplift your acoustic environment with Sunda EasyFix sound-absorbing panels, renowned for their superior acoustic performance and effortless installation. Engineered for simplicity, acoustic excellence, and aesthetic appeal, they are designed to enhance your space while being our easiest acoustic product to install, featuring a convenient peel-and-stick backing.



Product Features

- Self-adhesive acoustic panel
 - Easy installation with a convenient peel & stick backing
 - Achieves superior Class A acoustic performance
 - Suitable for residential and commercial use
 - Constructed from advanced lightweight acoustic foam technology
 - No additional hardware required
-



Sunda EasyFix Circle

Sunda EasyFix Circle is an excellent option for spaces where acoustics and aesthetics are important. With its soft, rounded corners and melamine core, these panels enhance sound clarity and minimise unwanted noise, creating a serene and visually appealing atmosphere.

Ø600 x 40 (mm)
Ø800 x 40 (mm)
Ø1000 x 40 (mm)
Ø1200 x 40 (mm)

SOLD PER PANEL





Sunda EasyFix Square

Sunda EasyFix Square is a popular solution for noise control. Featuring a lightweight yet high-performance melamine core, Sunda EasyFix panels are fabric-wrapped for a seamless and elegant finish.

600 x 600 x 40 (mm)
800 x 800 x 40 (mm)
1000 x 1000 x 40 (mm)
1200 x 1200 x 40 (mm)

SOLD PER PANEL



Sunda EasyFix Rectangle

Engineered for simplicity, acoustic excellence, and aesthetic appeal, Sunda EasyFix Rectangle is designed to enhance your space while being our easiest acoustic product to install and match to any interior.

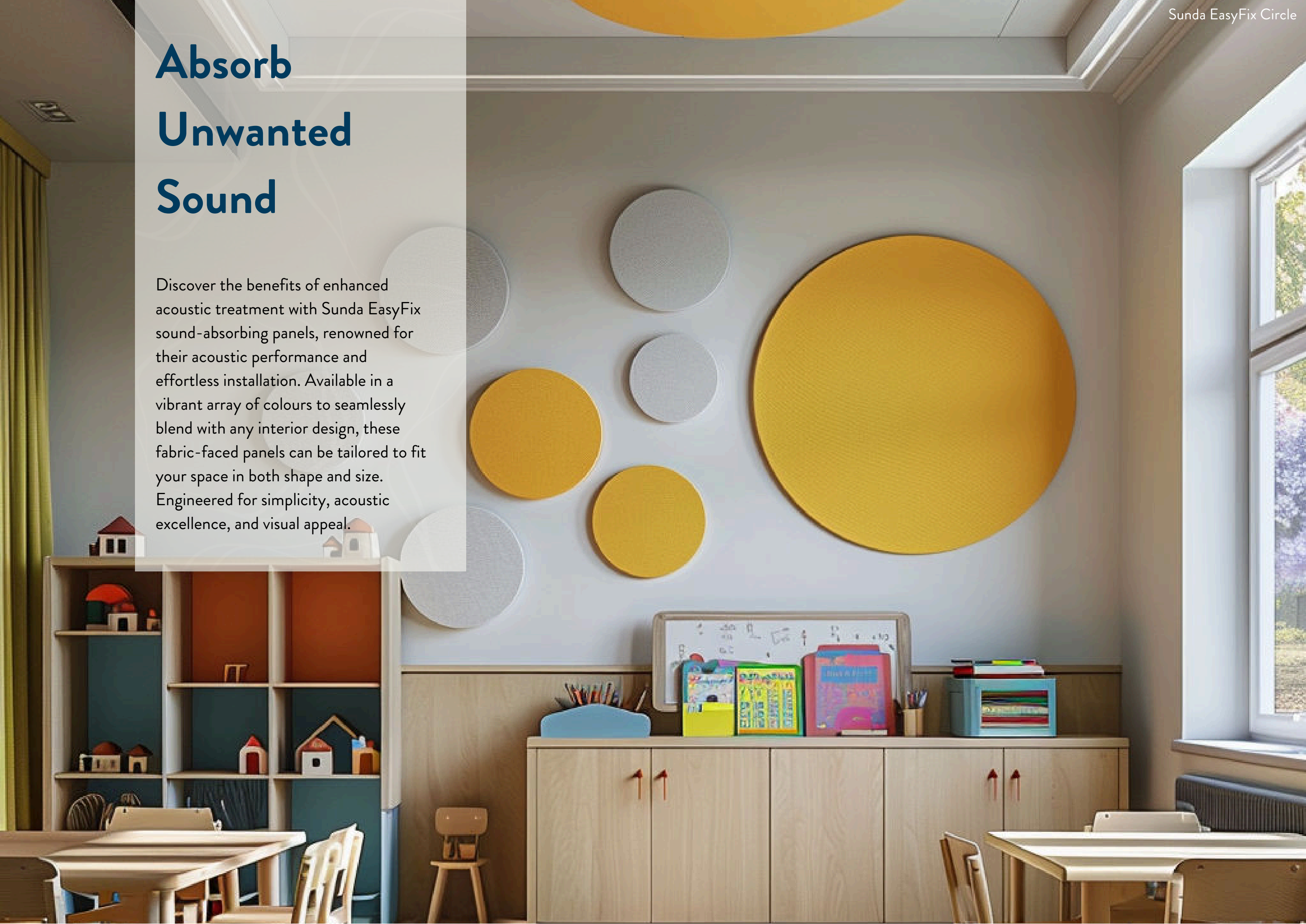
1200 x 600 x 40 (mm)
1200 x 900 x 40 (mm)
1500 x 1200 x 40 (mm)
1800 x 1200 x 40 (mm)
2100 x 1200 x 40 (mm)
2400 x 1200 x 40 (mm)

SOLD PER PANEL



Absorb Unwanted Sound

Discover the benefits of enhanced acoustic treatment with Sunda EasyFix sound-absorbing panels, renowned for their acoustic performance and effortless installation. Available in a vibrant array of colours to seamlessly blend with any interior design, these fabric-faced panels can be tailored to fit your space in both shape and size. Engineered for simplicity, acoustic excellence, and visual appeal.



Peel & Stick

Installation

Designed for simplicity, acoustic performance and aesthetic appeal to improve your space while boasting to be our easiest acoustic product to install with a simple peel-and-stick backing. No fixings are required for this product, you simply peel back to reveal the self-adhesive and apply to the surface.

How to install Sunda EasyFix

NO FIXINGS REQUIRED

Step 1. Handle with Care:

- Handle panels with clean hands or clean gloves to avoid marks.

Step 2. Prepare Wall Surface:

- Ensure the wall surface is clean and dry.
- Panels can be fixed to solid surfaces like concrete, plasterboard, and block work.
- Remove any wallpaper.
- Brush emulsion paint with a stiff brush.
- Ensure there is no cold bridging or dampness on the surface. Eliminate any condensation or dampness before applying panels.
- Ensure the surface is 100% flat for secure adhesion.

Step 3. Apply Panels:

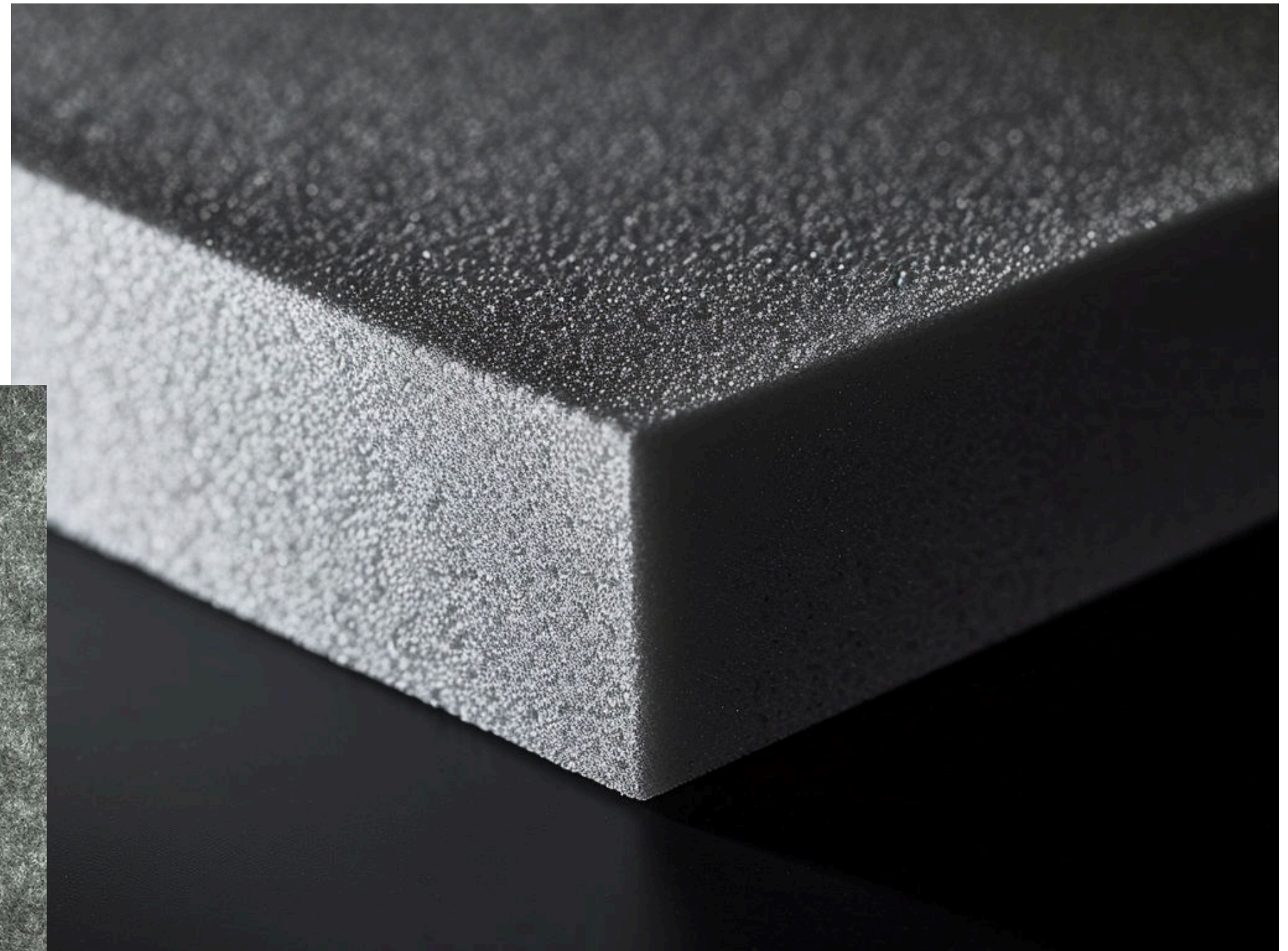
- Peel off the backing paper from the panel.
- Immediately apply the panel to the prepared surface to ensure good adhesion.



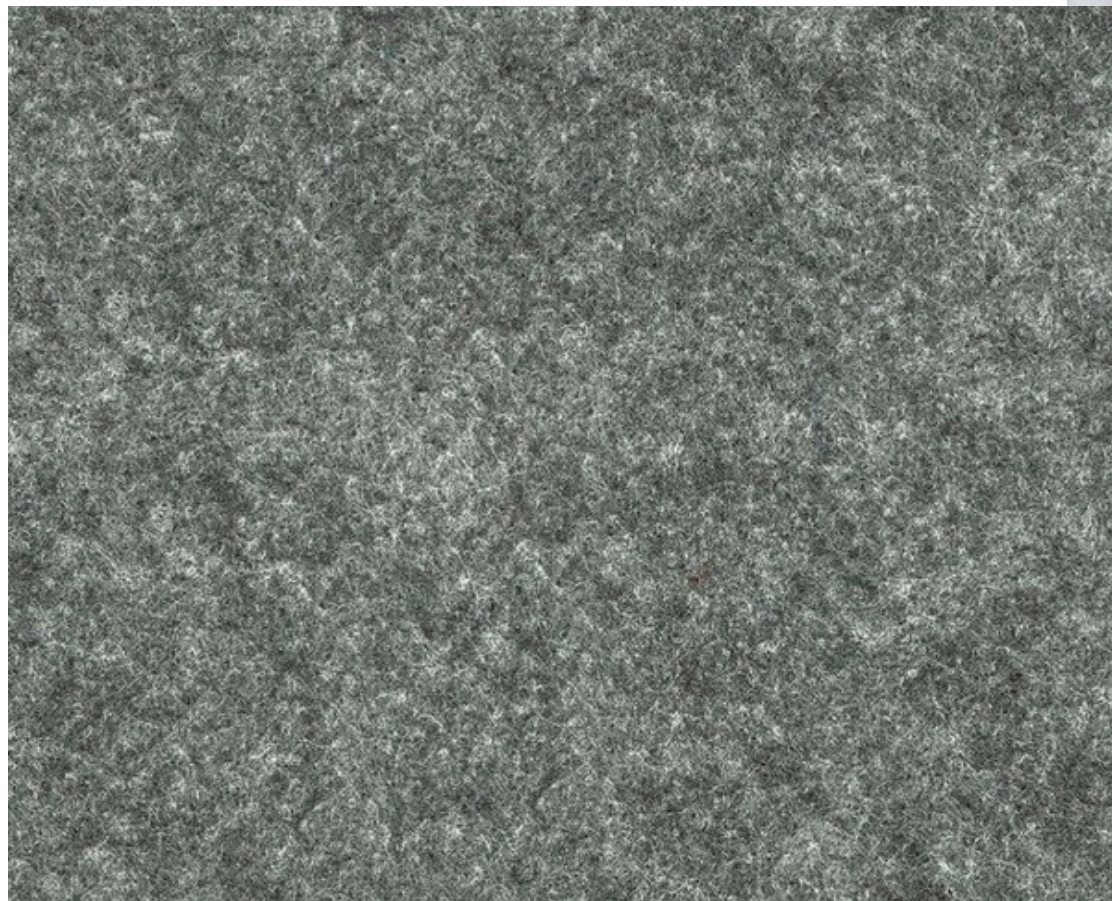
Sunda EasyFix **Materials**

Sunda EasyFix panels feature a high-quality melamine foam core paired with a premium fabric face, offering a luxurious finish and a wide variety of colour options.

Melamine Foam Core

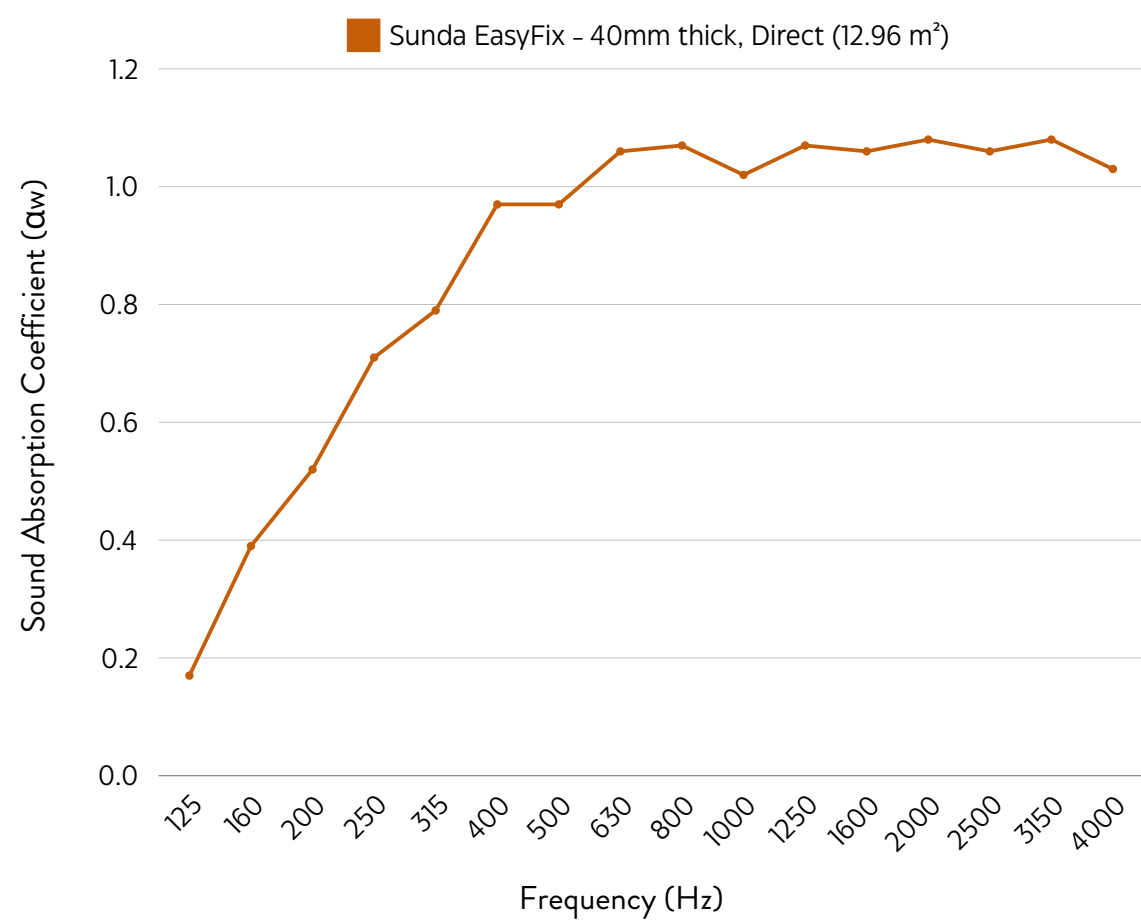


Camira Fabric



Performance Acoustic Results

Sunda EasyFix has great acoustic properties and offers up to a Class A Sound Absorption rating with an NRC value of 0.95.



Sunda EasyFix - 40mm thick, Direct (12.96 m²)																
Frequency (Hz)	125	160	200	250	315	400	500	630	800	1000	1250	1600	2000	2500	3150	4000
Absorption Coefficient (aw)	0.17	0.39	0.52	0.71	0.79	0.97	0.97	1.06	1.07	1.02	1.07	1.06	1.08	1.06	1.08	1.03
aw 0.95 Class A																
<small>Calculated to EN ISO 11654:1997</small>																
NRC 0.95																
<small>Calculated to ASTM C 423- 01</small>																





Product Specification



Fire

EasyFix core board has been tested and offers Class O fire rating to EN 13501-1:2007 / B-s1, d0 BS 476: Part 6 and 7 / BS 6853 Annex D.8.4 / BS 6853 Annex B2



Weight

EasyFix panels weigh 2 kg/m². All weights are given as approximations.



Acoustic Performance

Sunda EasyFix has been tested and offers Class A acoustic performance with a 0.95 NRC rating.



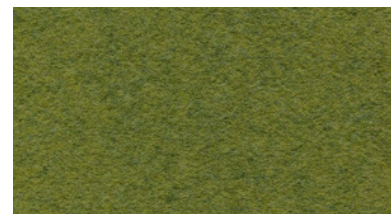
Sound
absorbing



Fire
retardant

Colours

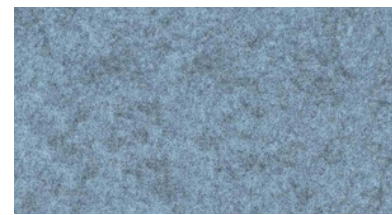
Sunda EasyFix is elegantly wrapped in high-quality Camira fabric. We offer the Sonus and Cara fabric range as standard, but can also provide other fabric options and colours upon request. For alternative colour choices, please contact a member of our team.



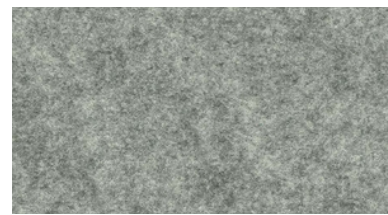
Sonus - Acoustic



Sonus - Amp



Sonus - Audio



Sonus - Beat



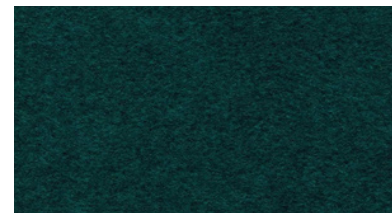
Sonus - Chime



Sonus - Chorus



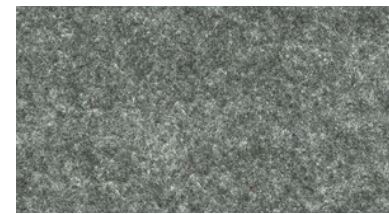
Sonus - Classical



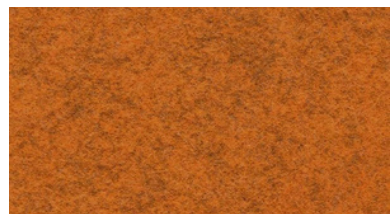
Sonus - Lyric



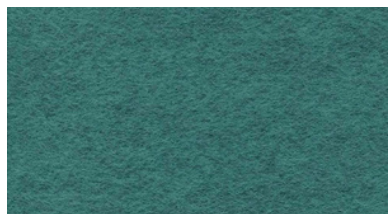
Sonus - Melody



Sonus - Music



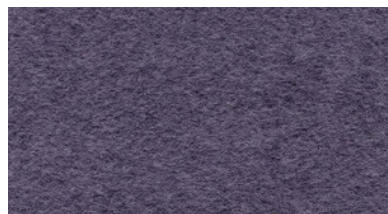
Sonus - Pop



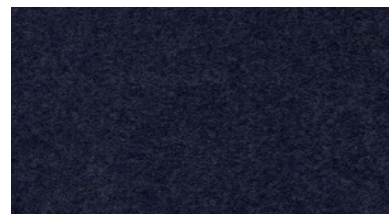
Sonus - Rap



Sonus - Song



Sonus - Soul



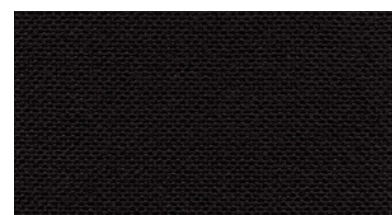
Sonus - Verse



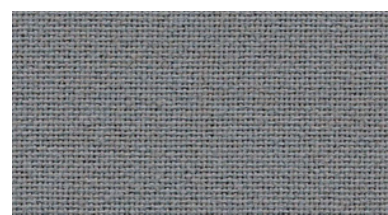
Sonus - Vocal



Sonus - Voice



Cara - Black



Cara - Chaucer



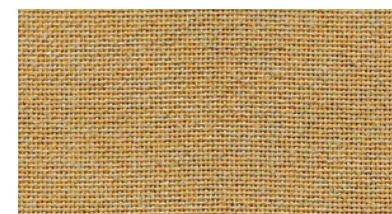
Cara - Galilee



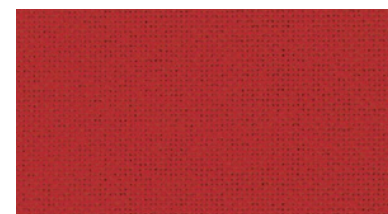
Cara - Glass



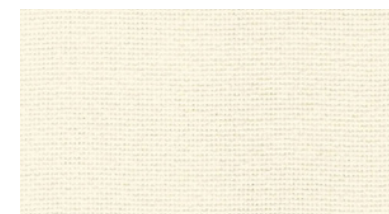
Cara - Lomond



Cara - Maree



Cara - Pitlochry



Cara - Vit

Samples

If you would like a closer look at our EasyFix fabric collections, please get in touch with a member of our team.

Storage & Handling

To ensure the integrity of Sunda EasyFix panels, protect them from excessive moisture during storage and handling. It is advisable to acclimate the panels for at least two days prior to installation to prevent any dimensional changes.



Aftercare & Maintenance

After installing the panels, remove any dust from their surfaces. Clear away any excess materials, rubbish, and debris generated during the installation process, ensuring the installation areas are left neat and clean.

FIND YOUR
HARMONY



FAQs

What surfaces can I install Sunda EasyFix on to?

The right surface should ensure a secure, long-lasting installation. Suitable surfaces include:

Drywall/plasterboard - Smooth, even surfaces ideal for panel adhesion.

Painted Walls - Flat, non-textured paint finishes work well. Avoid glossy paints.

Concrete - Bare, unpainted concrete is suitable if clean, dry, and free of coatings.

Plywood - Sturdy, flat plywood provides a good base for panel application. Proper surface preparation, with the surface being clean, dry, and free of contaminants, is crucial for ensuring a secure, long-lasting bond.

How many Sunda EasyFix panels do I need?

Determining the optimal quantity of EasyFix panels isn't an exact science. Broadly, increased surface coverage leads to greater sound absorption and reduced echo. As a general guideline, aiming to cover approximately 30% to 50% of the wall area typically results in effective sound absorption.

Can I remove and reposition the panel once I've stuck it to my wall?

The EasyFix panel is designed to be a permanent installation and therefore once in place and the adhesive has set it is not possible to reposition.

How long will this Sunda EasyFix panel stick on my wall for?

Following installation on a compatible surface, the EasyFix panel maintains secure positioning for an extended duration, ensuring long-lasting acoustic performance.

Can I install Sunda EasyFix to the ceiling?

We would not encourage installing EasyFix onto the ceiling due to the weight of this product however, if you are installing this to the ceiling, an additional silicone adhesive must be used which covers 100% of the panel surface.

CONTACT US

01977 525974

info@theacousticsstore.co.uk

www.theacousticsstore.co.uk

c/o Qic Trims Radclive Road,
Gawcott Buckingham, MK18 4BL

THE ACOUSTICS STORE
SOUNDS JUST RIGHT