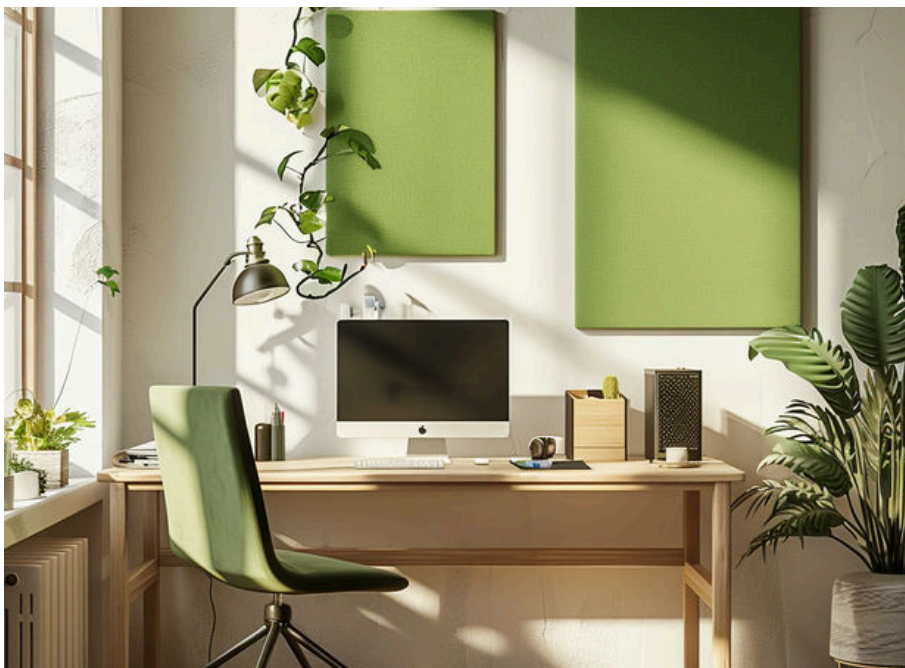


Sunda Wall



Sunda Wall Acoustic Fabric Wrapped Wall Panel

Sunda Wall sound-absorbing panels provide exceptional Class A acoustic performance, making them a popular choice for improving sound quality. These fabric-faced panels come in a wide range of colours to match any design aesthetic and are highly versatile to suit several applications.



Product Features

- High-quality sound absorbing wall panel
 - Offers up to Class A Acoustic performance
 - Fabric faced with several colours to suit your style
 - Rigid edges for a luxurious touch
 - Lightweight and easy to install
 - Includes mounting hardware
-



Sunda Wall Circle

Crafted from a high-performance glass wool core with fabric wrapped around the face and edges, Sunda Wall Circle offers a seamless and elegant finish, transforming any area into an acoustically optimised and visually appealing space.

Ø600 x 25 (mm)	Ø600 x 40 (mm)
Ø800 x 25 (mm)	Ø800 x 40 (mm)
Ø1000 x 25 (mm)	Ø1000 x 40 (mm)
Ø1200 x 25 (mm)	Ø1200 x 40 (mm)

SOLD PER PANEL





Sunda Wall Square

Sunda Wall Square is a popular choice for acoustic treatment, offering a sleek design, superior sound absorption, and easy installation. Its straightforward shape and high-performance acoustic properties make it both a stylish and functional solution.

600 x 600 x 25 (mm)	600 x 600 x 40 (mm)
800 x 800 x 25 (mm)	800 x 800 x 40 (mm)
1000 x 1000 x 25 (mm)	1000 x 1000 x 40 (mm)
1200 x 1200 x 25 (mm)	1200 x 1200 x 40 (mm)

SOLD PER PANEL



Sunda Wall Rectangle

Sunda Wall features a sleek rectangular design and is available in various sizes to suit your space. With its clean, straight edges, it provides a sophisticated and effective solution for your acoustic needs.

1200 x 600 x 25 (mm)

1200 x 900 x 25 (mm)

1500 x 1200 x 25 (mm)

1800 x 1200 x 25 (mm)

2100 x 1200 x 25 (mm)

2400 x 1200 x 25 (mm)

2700 x 1200 x 25 (mm)

1200 x 600 x 40 (mm)

1200 x 900 x 40 (mm)

1500 x 1200 x 40 (mm)

1800 x 1200 x 40 (mm)

2100 x 1200 x 40 (mm)

2400 x 1200 x 40 (mm)

2700 x 1200 x 40 (mm)

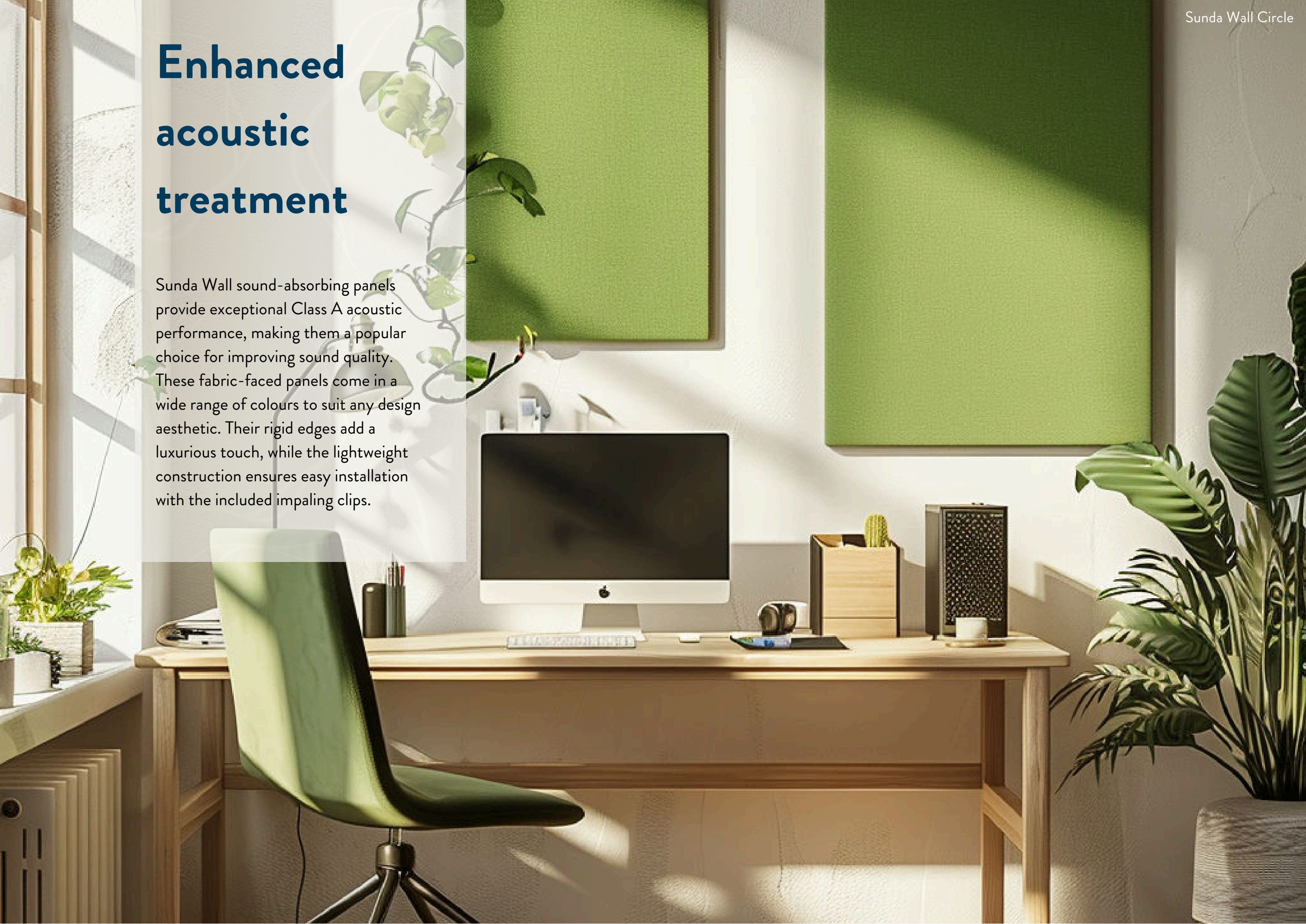
3000 x 1200 x 40 (mm)

SOLD PER PANEL



Enhanced acoustic treatment

Sunda Wall sound-absorbing panels provide exceptional Class A acoustic performance, making them a popular choice for improving sound quality. These fabric-faced panels come in a wide range of colours to suit any design aesthetic. Their rigid edges add a luxurious touch, while the lightweight construction ensures easy installation with the included impaling clips.



Installation

How to install Sunda Wall

Step 1. Mark the Area:

- Lightly trace the edges of the panel onto the desired installation area.

Step 2. Attach Clips:

- Measure, mark and then securely fix the appropriate number of clips using screws within the traced area.

Step 3. Apply Adhesive:

- Spray high-strength contact adhesive vertically onto the panel's reverse surface and horizontally onto the desired installation area. Be sure to spray over the clips. Ensure the adhesive covers 100% of both surfaces.

Step 4. Wait for Adhesive to Dry:

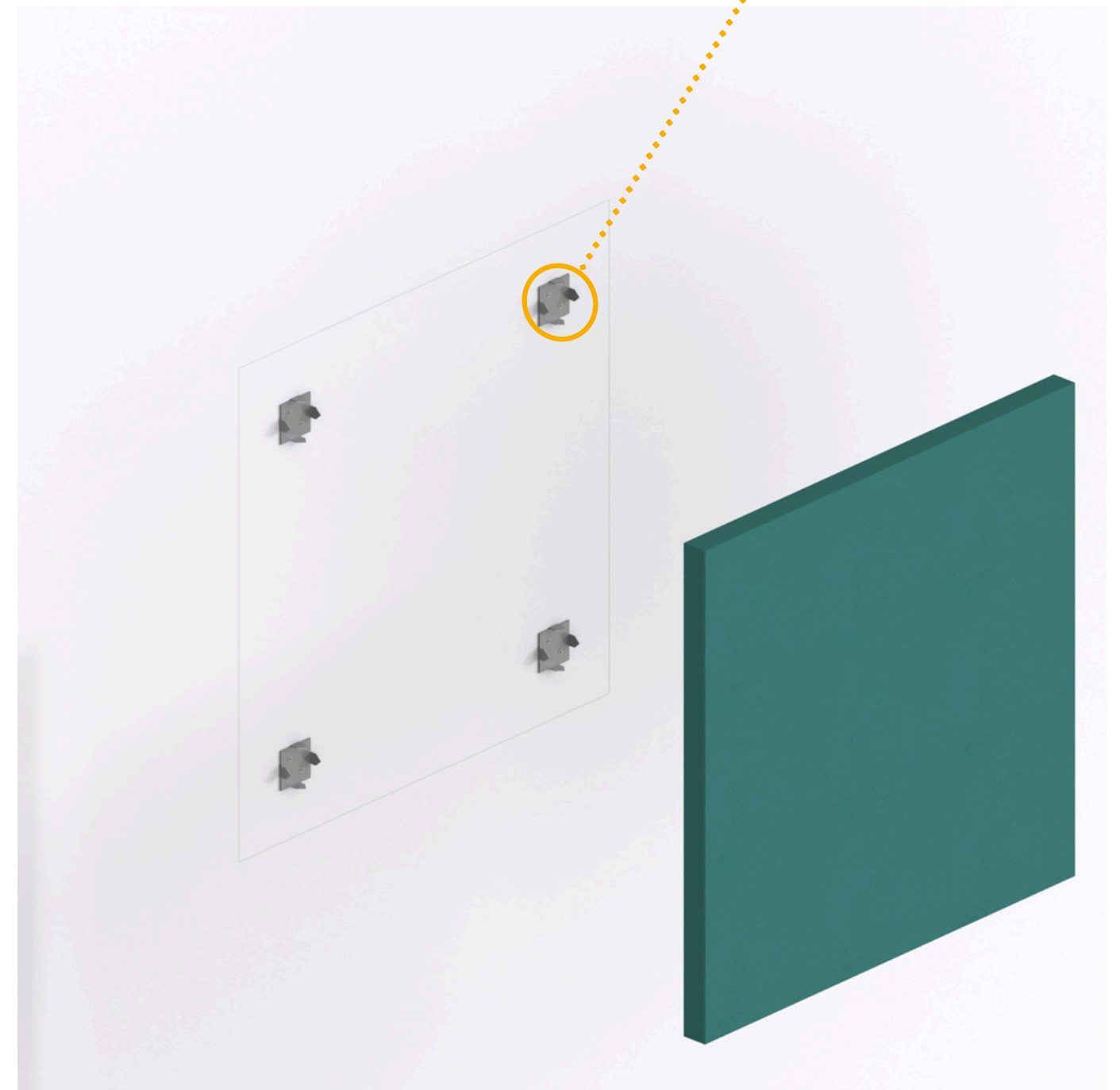
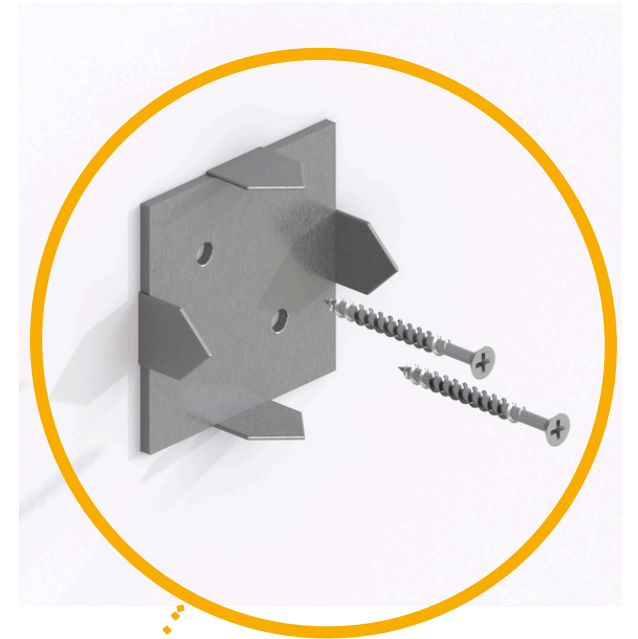
- Allow the adhesive to dry for 2-5 minutes at 23°C.

Step 5. Align and Attach Panel:

- Carefully align the panel with the marked area and push gently, allowing the clip spikes to bite into the panel.

6. Press Firmly:

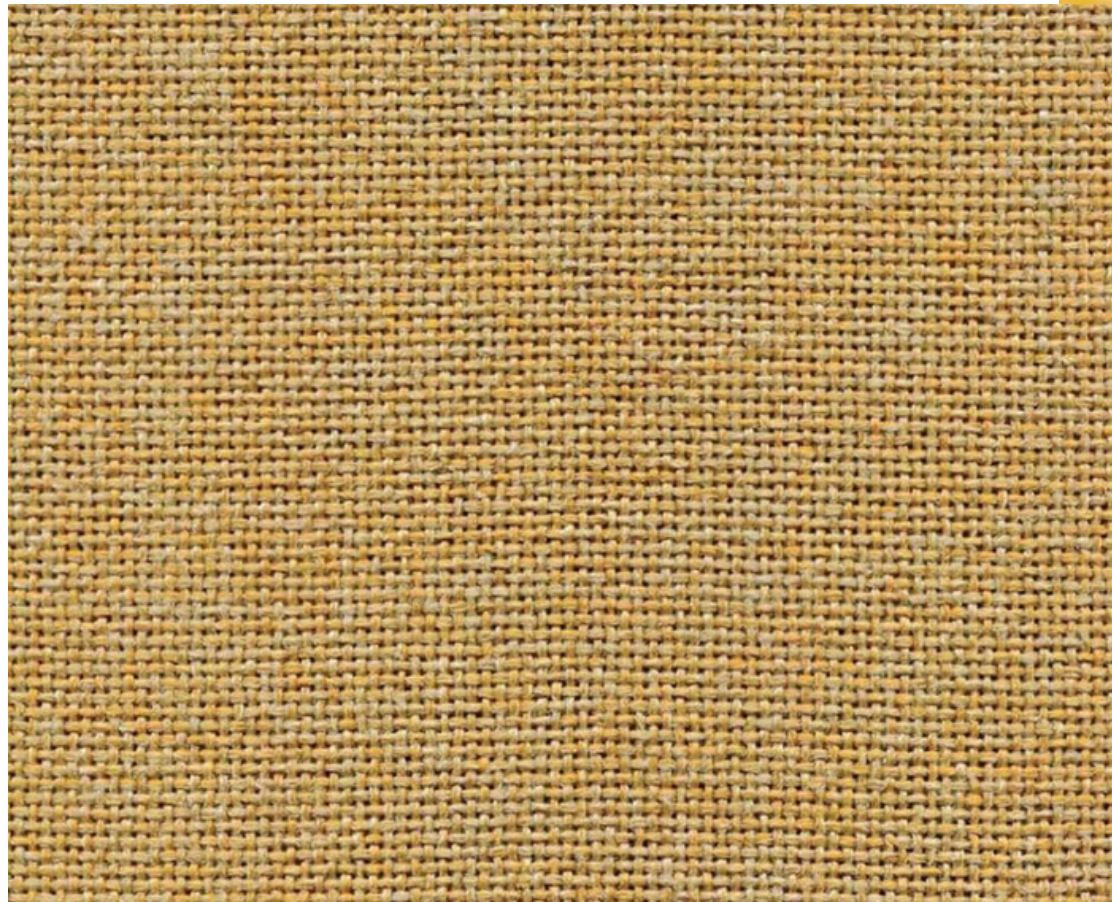
- Once the panel is properly positioned, press firmly over the entire surface to ensure maximum contact with the wall.



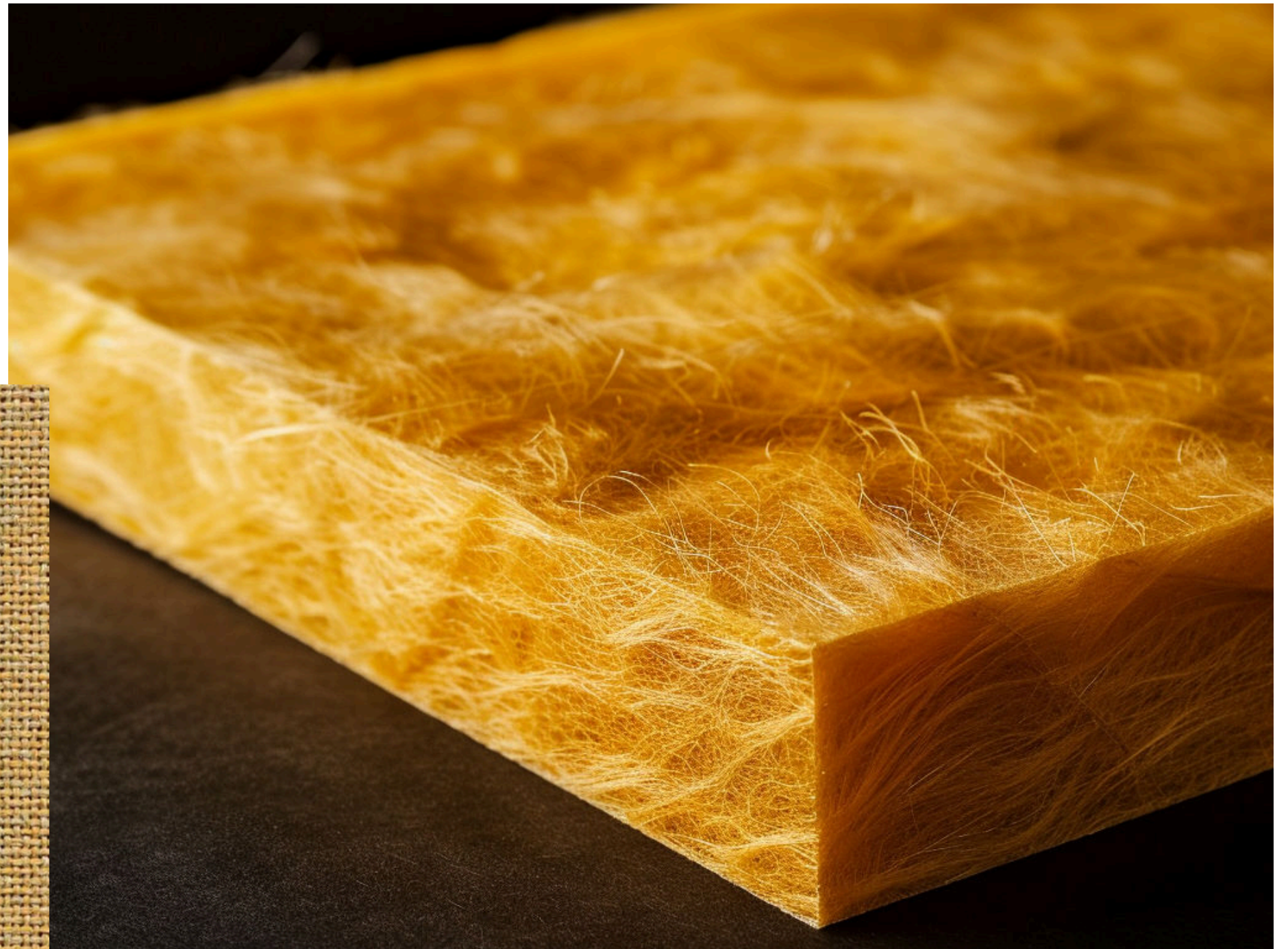
Sunda Wall **Materials**

Sunda Wall features a dense glass wool core, providing exceptional sound absorption while being environmentally sustainable. Its high-quality fabric face delivers a premium finish and comes in a wide range of colours.

Camira Fabric

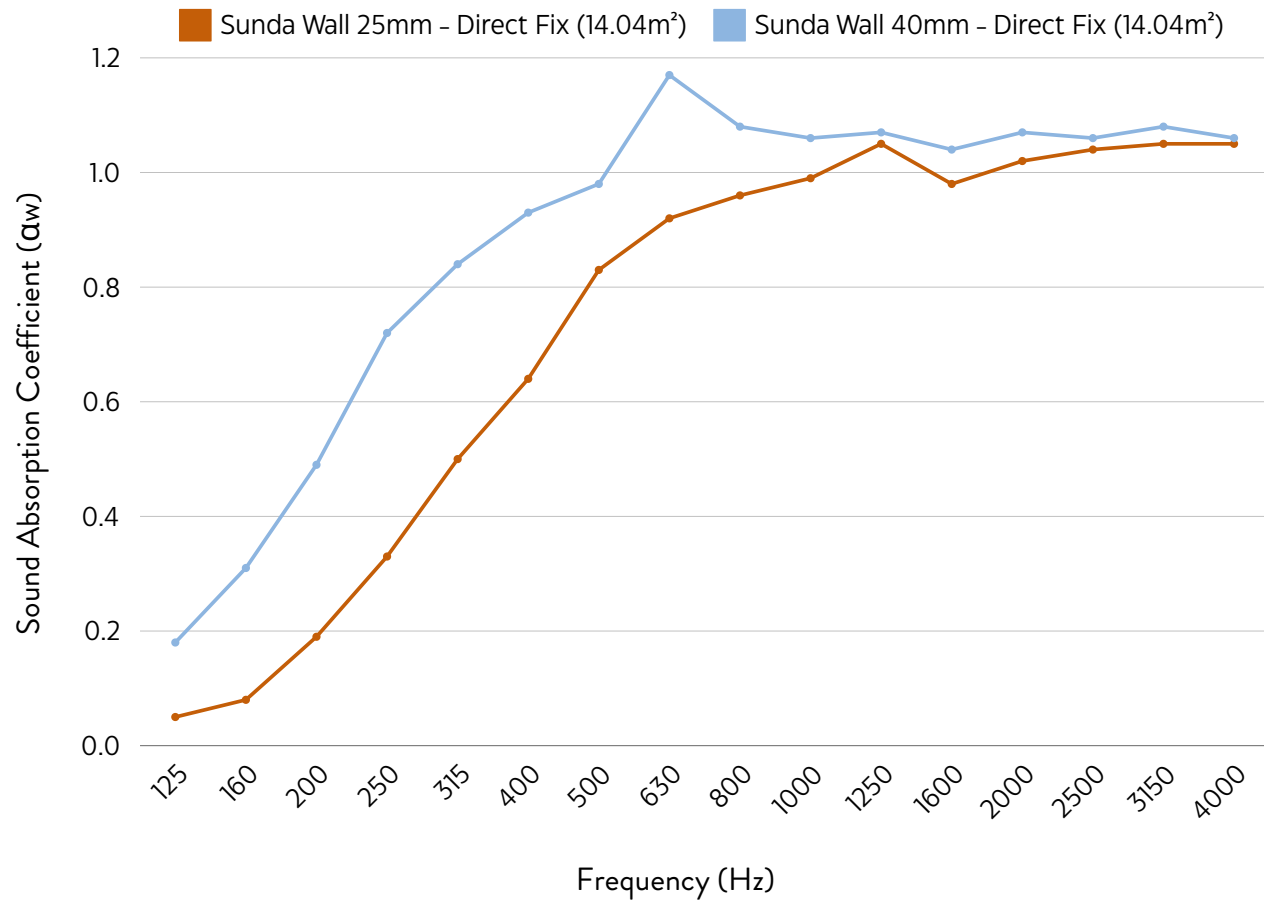


Glass Wool Core



Performance Acoustic Results

Sunda Wall Panel has great acoustic properties and offers up to a Class A Sound Absorption rating.



Absorption Coefficient (αw)																
Frequency (Hz)	125	160	200	250	315	400	500	630	800	1000	1250	1600	2000	2500	3150	4000
Sunda Wall 25mm	0.05	0.08	0.19	0.33	0.50	0.64	0.83	0.92	0.96	0.99	1.05	0.98	1.02	1.04	1.05	1.05
Sunda Wall 40mm	0.18	0.31	0.49	0.72	0.84	0.93	0.98	1.17	1.08	1.06	1.07	1.04	1.07	1.06	1.08	1.06

25mm:
 α_w 0.65 Class C
Calculated to EN ISO 11654:1997
NRC 0.80
Calculated to ASTM C 423-01

40mm:
 α_w 1.00 Class A
Calculated to EN ISO 11654:1997
NRC 0.95
Calculated to ASTM C 423-01





Product Specification



Fire

Sunda Wall core board offers EN 13501-1:2018 A2-s1, d0 and Class O fire rating to BS476: Part 6. Fabric facing (Lucia) complies with: Class 1 to BS476: Part 7 and EN1350-1 Class B, s1, d0. Class 0 fabrics can be supplied on request



Weight

Sunda Wall - 25mm panels weigh 3.5kg/m²
Sunda Wall - 40mm panels weigh 4.5kg/m²



Acoustic Performance

Sunda Wall has been tested and offers up to Class A acoustic performance with an 0.95 NRC rating



Sound
absorbing



Eco
friendly

Colours

Sunda Wall is elegantly wrapped in high-quality Camira fabric. We offer the Lucia fabric range as standard, but can also provide other fabric options and colours upon request. For alternative colour choices, please contact a member of our team.



Samples

If you would like a closer look at our Sunda collections, please get in touch.

Storage & Handling

Protect Sunda Wall from excessive moisture during storage and handling. Avoid placing or stacking items on top of the panels to prevent damage. Handle with clean hands or gloves to avoid marks. Store in a clean, uncluttered area to prevent accidental damage.

Aftercare & Maintenance

Sunda Wall requires minimal maintenance post-installation. For cleaning, use a damp cloth as needed and dust periodically to keep the panels looking their best.



FIND YOUR
HARMONY



FAQs

How many panels do I need?

Determining the optimal quantity of wall panels isn't an exact science. Broadly, increased surface coverage leads to greater sound absorption and reduced echo. As a general guideline, aiming to cover approximately 30% to 50% of the wall area typically results in effective sound absorption.

Do you make this wall panel in custom shapes and sizes?

Yes, although we have a standard range of the most popular sizes it is possible to have a customised size of the Sunda Wall Panel to suit your requirements.

Do I need any screws or equipment to install these panels?

The only fixings you will need in addition to the supplied impaling clips are the screws to attach these to the wall. We do not supply these screws as the appropriate screws will be dependent on your soffit structure ie. Plasterboard, concrete, timber which your local DIY store will be able to recommend.

Is there a warranty with Sunda Raft?

Our Sunda Wall Panel comes with a one-year manufacturer's warranty, providing coverage for any defects in materials or workmanship.

Where is this product shipped from?

Sunda Wall is manufactured in and shipped from the UK.

How do these wall panels arrive?

Your delivery will arrive fully packaged and protected on a specific vehicle for the size and weight of your delivery.

CONTACT US

01977 525974

info@theacousticsstore.co.uk

www.theacousticsstore.co.uk

c/o Qic Trims Radclive Road,
Gawcott Buckingham, MK18 4BL

THE ACOUSTICS STORE
SOUNDS JUST RIGHT