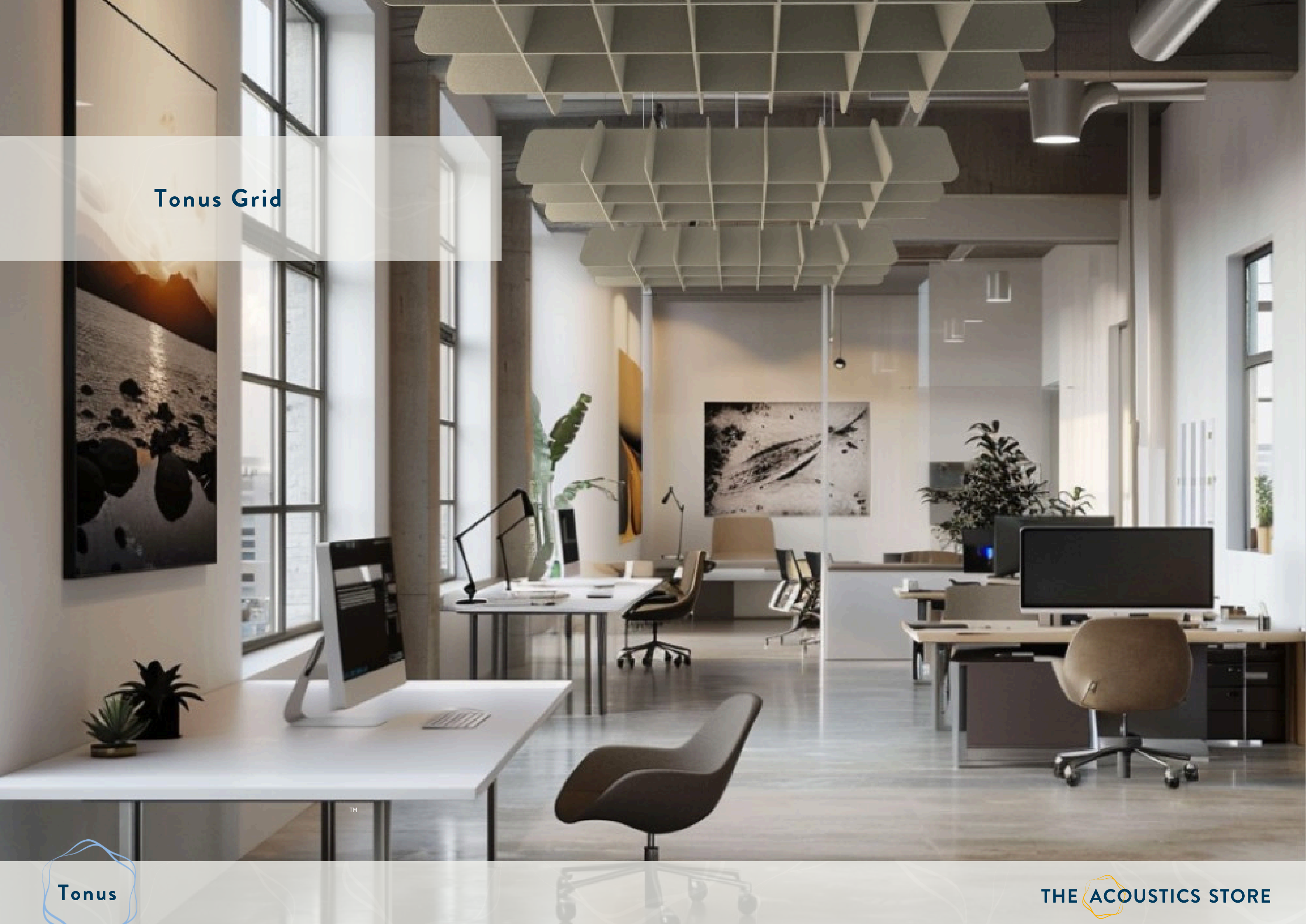


## Tonus Grid







## Tonus Grid **PET Felt Acoustic Lattice Baffle**

Elevate your acoustic environment with Tonus Grid, an impressive lattice baffle system suspended from the ceiling to enhance sound clarity and reduce echo. The grid design, with its angled shapes, maximises sound absorption by dissipating noise efficiently, making it an ideal choice for a variety of spaces, especially those with high ceilings and open layouts.





Tonus Grid Matrix

## Product Features

- Suspended sound absorbing lattice baffle system
- Engineered to enhance sound clarity and reduce echo
- Manufactured from compressed polyester using recycled plastic bottles
- Grid design enhances absorption by dissipating noise through angled shapes
- Lightweight and easy to install with adjustable suspension heights
- Perfect for open spaces and high ceilings





---

## Tonus Grid Array

Versatile and suitable for a diverse range of applications, including offices, auditoriums, and public areas, Tonus Grid Array not only improves acoustics but also adds a modern, dynamic aesthetic to the environment.

2400 x 1200 x 300 x 12 (mm)

SOLD PER GRID SYSTEM







---

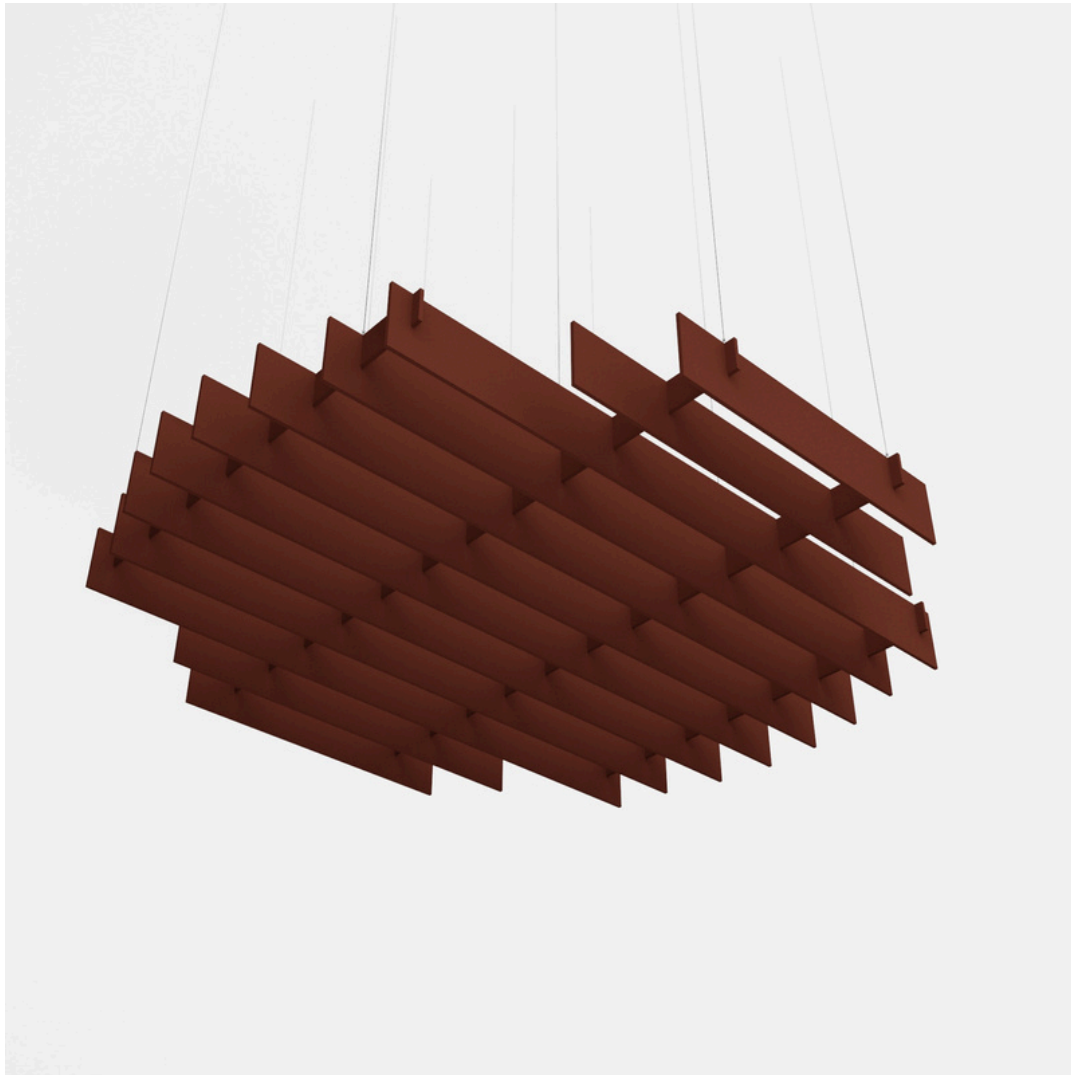
## Tonus Grid Ellipse

Ideal for offices, auditoriums, and expansive public areas, Tonus Grid Ellipse not only enhances acoustics but also introduces a contemporary, dynamic aesthetic to any space.

2400 x 940 x 470 x 12 (mm)

SOLD PER GRID SYSTEM





---

## Tonus Grid Grill

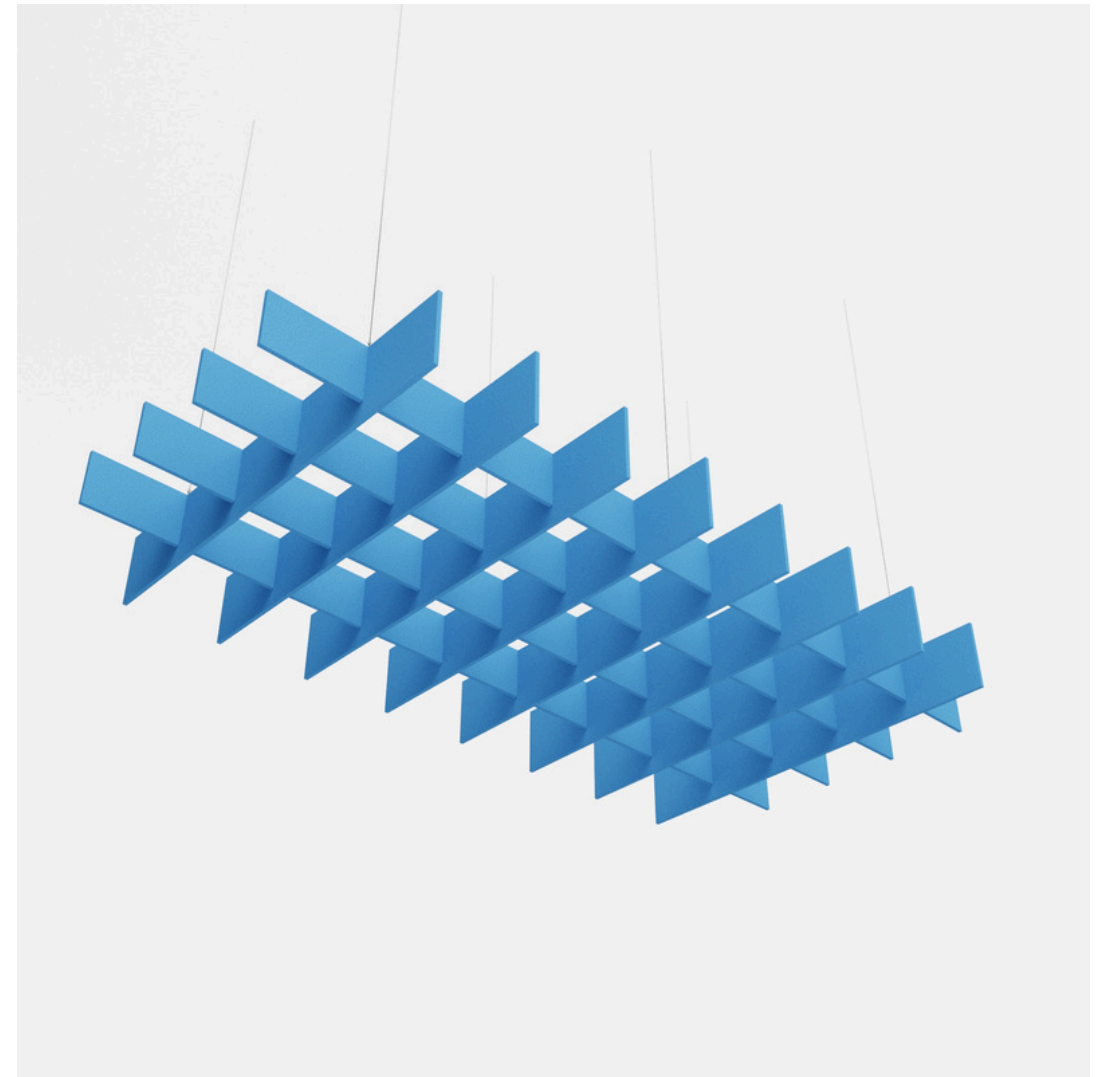
Tonus Grid Grill is a circular baffle system that enhances any space by adding depth and dimension while effectively reducing unwanted noise. Featuring structured baffle edges and a grill-like design, this grid serves as both a practical and visually striking interior element.

2400 x 2400 x 200 x 12 (mm)

SOLD PER GRID SYSTEM







---

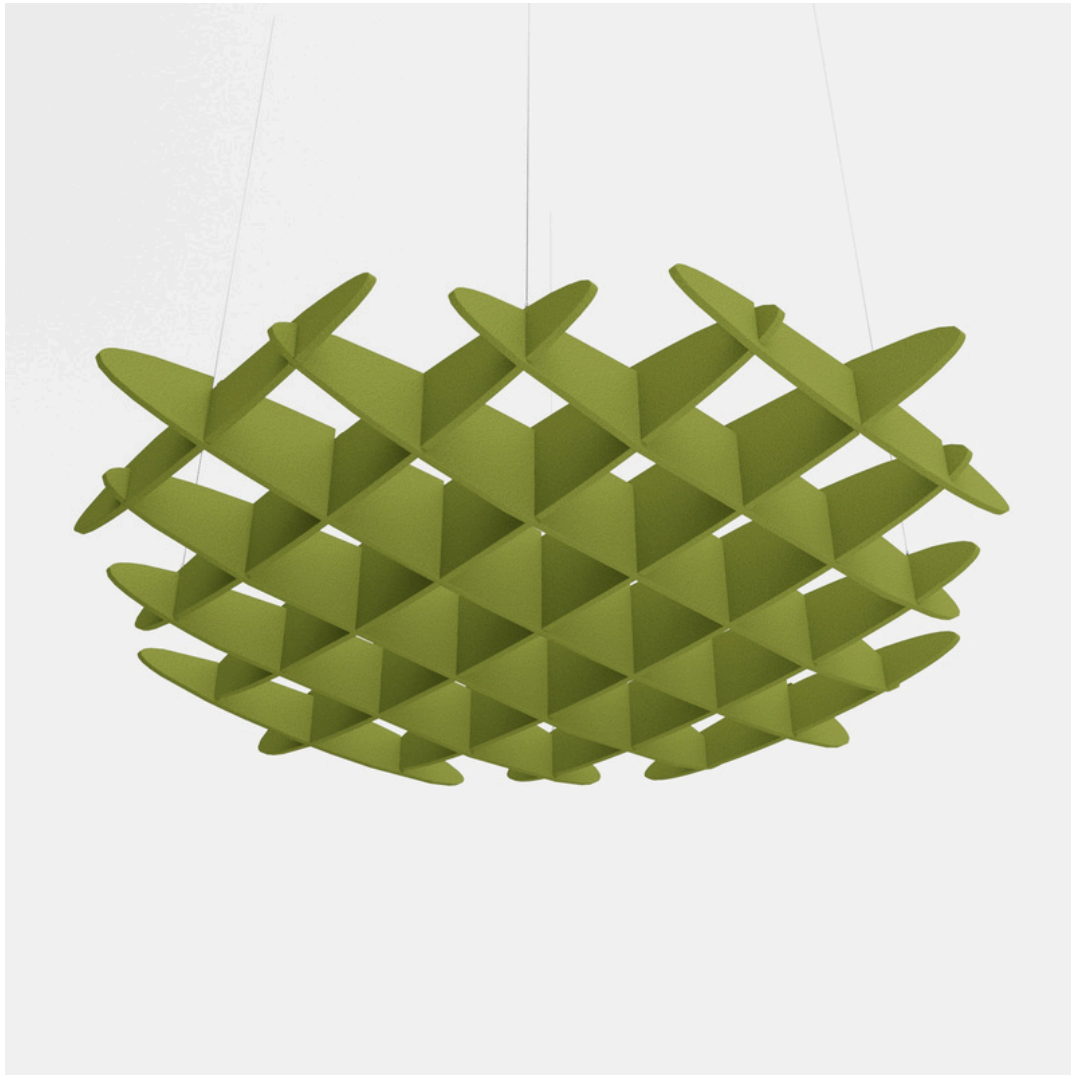
## Tonus Grid Matrix

Tonus Grid Matrix is a rectangular baffle system that transforms any space by adding depth and dimension while effectively minimising unwanted noise. With its structured baffle edges and true grid-like design, this system serves as both a practical and aesthetically pleasing interior feature.

2400 x 1200 x 200 x 12 (mm)

SOLD PER GRID SYSTEM





---

## Tonus Grid Waffle

Tonus Grid Waffle is a uniquely shaped baffle system that enhances any space by adding character and dimension while effectively reducing unwanted noise. Its intricate, waffle-like design and soft rounded edges make this grid both a functional and visually captivating interior feature.

1200 x 1200 x 200 x 12 (mm)

SOLD PER GRID SYSTEM





# Elevating acoustic environments

Elevate your acoustic environment with the Tonus Grid, an impressive lattice baffle system suspended from the ceiling to enhance sound clarity and reduce echo. Made from compressed polyester using recycled plastic bottles, this eco-friendly solution is as sustainable as it is effective. One of the key advantages of the Tonus Grid is its lightweight and easy installation process. It features adjustable suspension heights, allowing you to customise the setup according to your specific needs and preferences.





# Installation

---

## How to install Tonus Grid

### Step 1. Connect the Grid:

- Build the Grid by slotting together the individual PET pieces by located the slots in each piece and adjoin.

### Step 2. Prepare Top Hat:

- Determine the appropriate placement area on the soffit and Grid, mark the location and securely install the top hat and adjustable wire hanging kit using suitable fixings.

### Step 3. Prepare Clamps:

- Each Grid is equipped with clamps that will allow you to attach the Grid to the wire hanging kits, the quantity of clamps will vary depending on its size.

### Step 4. Position Clamps:

- Space the clamps out in line with your soffit positioning.

### Step 5. Insert Clamps:

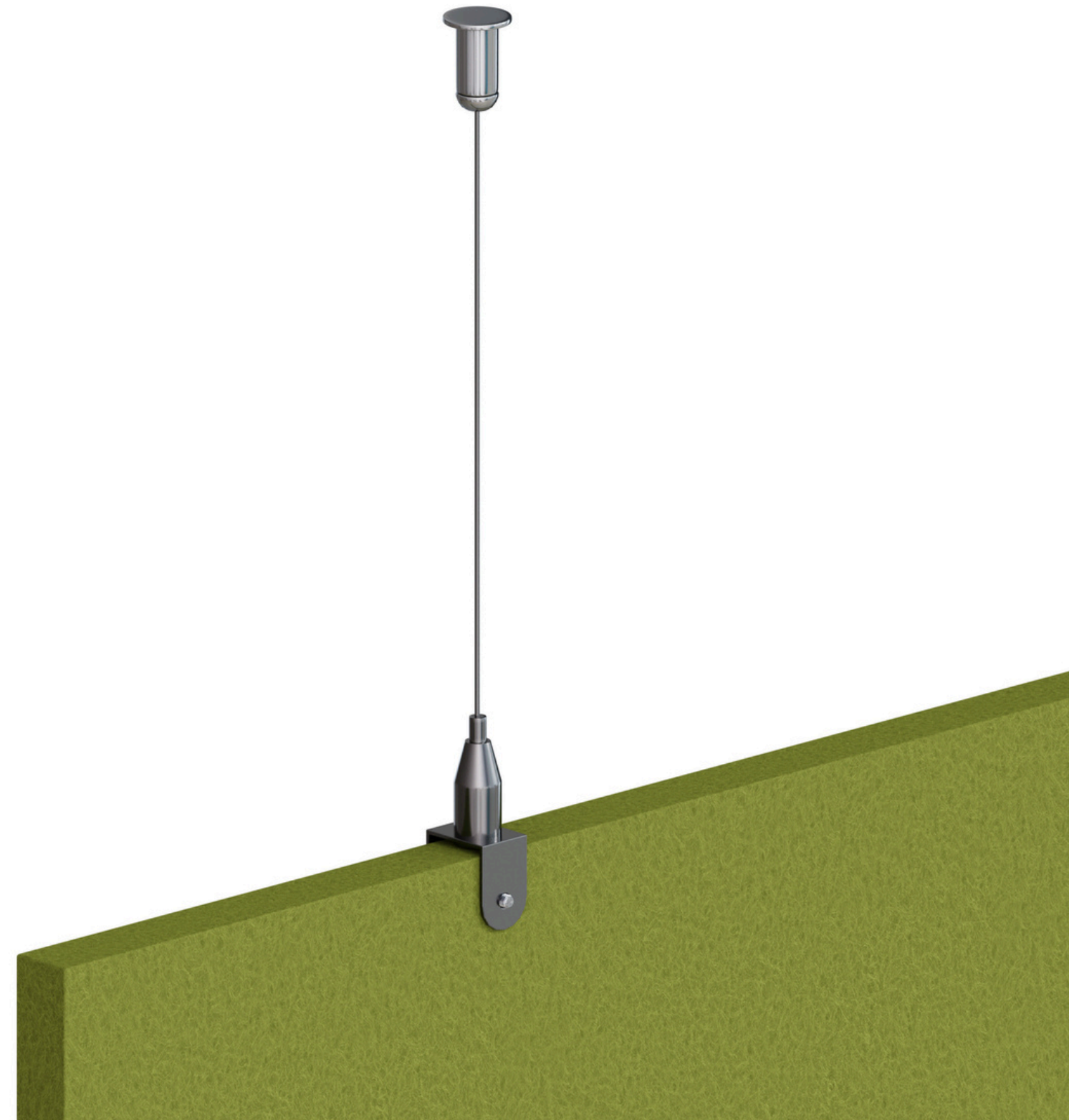
- Press each clamp over the edge of the Grid and insert screws through the clamps, penetrating the PET to secure them in place.

### Step 6. Connect Grid to Wire:

- Lift the Grid and align it with the wire hanging kit and then feed the wire through into the clamp, repeat across the Grid.

### Step 7. Level Adjustment:

- To adjust the height and level of the Grid, press down on the mechanism located on the top side of the clip. This action releases tension on the wire, allowing for adjustments.





## Tonus Grid **Materials**

Tonus Grid core material is a compressed polyester manufactured using post-consumer recycled polyester from plastic bottles.

Polyester Felt (PET)



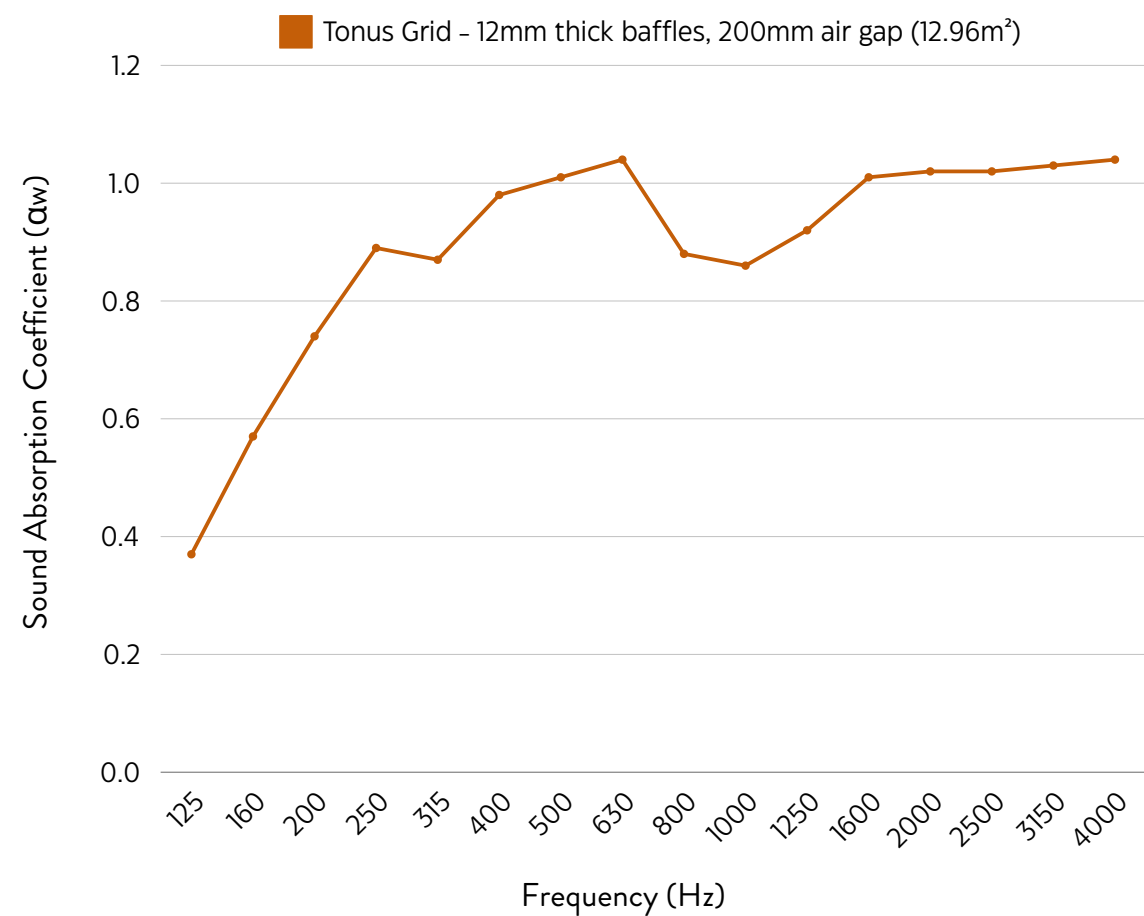
Recycled Plastic Bottles





# Performance Acoustic Results

Tonus Grid has great acoustic properties and offers a high level of sound absorption to reduce unwanted echo and reverberation.



Tonus Grid - 12mm thick baffles, 200mm air gap (12.96m <sup>2</sup> )																
Frequency (Hz)	125	160	200	250	315	400	500	630	800	1000	1250	1600	2000	2500	3150	4000
Absorption Coefficient (α <sub>w</sub> )	0.37	0.57	0.74	0.89	0.87	0.98	1.01	1.04	0.88	0.86	0.92	1.01	1.02	1.02	1.03	1.04
<p>α<sub>w</sub> 1.00 up to Class A            Calculated to EN ISO 11654:1997  <b>NRC 0.95</b>            Calculated to ASTM C 423-01</p>																







## Product Specification



### Fire

Tonus Grid core board has been tested and offers EN 13501-1:2007+A1:2009 Fire classification of construction products and building elements—Part 1: Classification using data from reaction to fire tests, Class B.



### Weight

Tonus Grid weighs 4.5kg/m<sup>2</sup>. All weights are given as approximations.



### Acoustic Performance

Tonus Grid has been tested and offers up to Class A acoustic performance with a 0.95 NRC rating.



Single-polymer  
& recyclable



Durable & moisture  
resistant



Oeko-tex  
certified



Easy  
cleaning



Eco  
friendly



Printable



Sound  
absorbing



Fire  
retardant



Impact  
Resistant

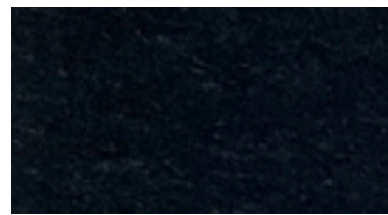


# Colours

Tonus Grid is available in a large range of standard felt colours. Choose from a selection of dark, nude, vibrant and marble tones to best suit your space.



Camel Ivory



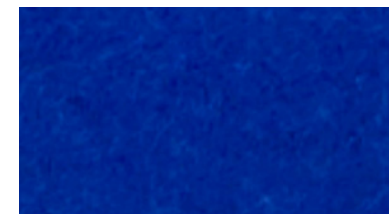
Black



Charcoal Grey



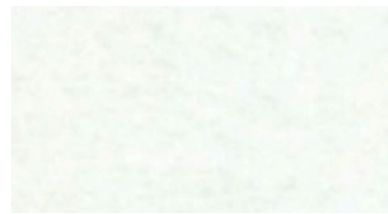
Cyan



Dark Blue



Green



White



Light Grey



Light Blue



Marble Beige



Marble Green



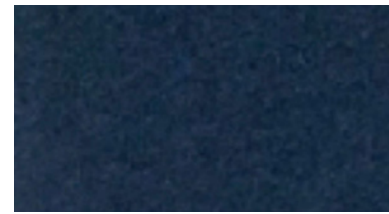
Red



Marble Red



Marble Smoke Blue



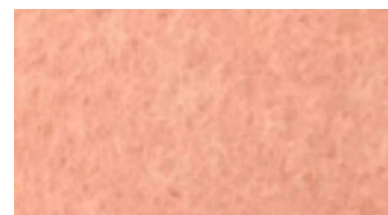
Navy



Mild Brown



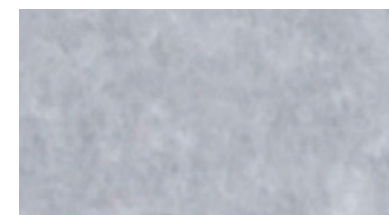
Orange



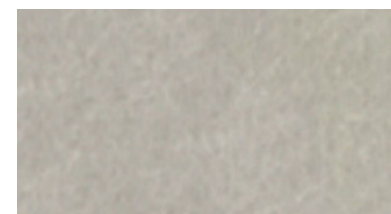
Pink



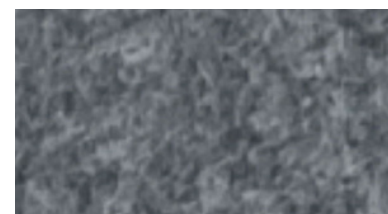
Purple



Stone



Silver Savoya



Dark Grey



Yellow

## Samples

If you would like a closer look at our Tonus colours, please get in touch with a member of our team.



## Storage & Handling

Protect Tonus Grid from excessive moisture during storage and handling. Avoid placing or stacking items on top of the baffles to prevent damage. Handle with clean hands or gloves to avoid marks. Store in a clean, uncluttered area to prevent accidental damage.



## Aftercare & Maintenance

Tonus Grid requires minimal maintenance post-installation. For cleaning, use a damp cloth as needed and dust periodically to keep the grids looking their best.

FIND YOUR  
**HARMONY**





# FAQs

## **How many Grids do I need?**

Determining the optimal quantity of Tonus Grid isn't an exact science. Broadly, increased surface coverage leads to greater sound absorption and reduced echo. As a general guideline, aiming to cover approximately 30% to 50% of the ceiling area typically results in effective sound absorption.

## **Do you only offer these colours and designs shown?**

Although we have a standard range of the most popular designs and colours we do also have other design options that you may prefer. Simply get in touch and we'll show you other possible designs.

## **Do I need any screws or equipment to install these Grids?**

The only fixings you will need in addition to the supplied hanging kits are the screws to attach the Top Hat fixing to the soffit. We do not supply these screws as the appropriate screws will dependant on your soffit structure ie. Plasterboard, concrete, timber which your local DIY store will be able to recommend.

## **Is there a warranty with Tonus Raft?**

Our Tonus Grid comes with a one-year manufacturer's warranty, providing coverage for any defects in materials or workmanship.

## **How much difference will these rafts make to the acoustics in my space?**

The Tonus Grid effectively absorbs direct sound and reflections from ceilings and upper wall sections. While it doesn't address noise transfer between rooms, it noticeably diminishes noise within an open area. Installing the appropriate number of baffles achieves significant results, reducing echo and reverberation for a quieter, more tranquil atmosphere.



# CONTACT US

01977 525974

[info@theacousticsstore.co.uk](mailto:info@theacousticsstore.co.uk)

[www.theacousticsstore.co.uk](http://www.theacousticsstore.co.uk)

c/o Qic Trims Radclive Road,  
Gawcott Buckingham, MK18 4BL

**THE ACOUSTICS STORE**  
*SOUNDS JUST RIGHT*