

## Tonus Raft





## Tonus Raft **PET Felt Acoustic Raft**

---

Versatile and stylish, Tonus Raft seamlessly fits into multiple spaces, including offices, classrooms, and public areas, enhancing both sound quality and aesthetic appeal. The clean, modern design provides a sleek addition to any interior while effectively controlling noise levels.





Tonus Raft Hexagon

## Product Features

- PET raft with superior sound absorption capabilities
  - Made from compressed polyester derived from recycled plastic bottles
  - Designed to combat unwanted echo and reverberation
  - Lightweight and effortlessly installed with adjustable suspension heights
  - Offers versatile design choices, suitable for various environments
-





---

## Tonus Raft Circle

Tonus Raft Circle provides a stylish solution for significantly reducing unwanted echo and reverberation. With its soft, round edges and PET core, it helps create a more calming and tranquil space.

Ø1200 x 24 (mm)

SOLD IN PACKS OF 2







## Tonus Raft Rectangle

Tonus Raft Rectangle delivers outstanding acoustic performance while enhancing your space with added structure and dimension. A trusted solution to effectively reduce unwanted noise and create a more serene environment.

1800 x 800 x 24 (mm)  
2400 x 1200 x 24 (mm)

SOLD PER RAFT







---

## Tonus Raft Cloud

Tonus Raft Cloud brings a playful and unique element to your space, enhancing both aesthetics and sound quality. Made from durable PET felt, it effectively absorbs noise while adding a touch of character to any room.

1000 x 800 x 24 (mm) - Sold in packs of 2

1800 x 1200 x 24 (mm) - Sold per Raft





---

## Tonus Raft Square

Tonus Raft Square is a popular choice for acoustic treatment, offering a sleek design, superior sound absorption, and easy installation. Its straightforward shape and high-performance acoustic properties make it both a stylish and functional solution.

1200 x 1200 x 24 (mm)

SOLD IN PACKS OF 2





---

## Tonus Raft Ellipse

Tonus Raft Ellipse offers a stylish and contemporary solution to your acoustic needs, seamlessly blending form and function. Crafted from high-quality PET felt, it effectively absorbs sound while adding an elegant touch to any room.

2400 x 800 x 24 (mm)

2400 x 1200 x 24 (mm)

SOLD PER RAFT







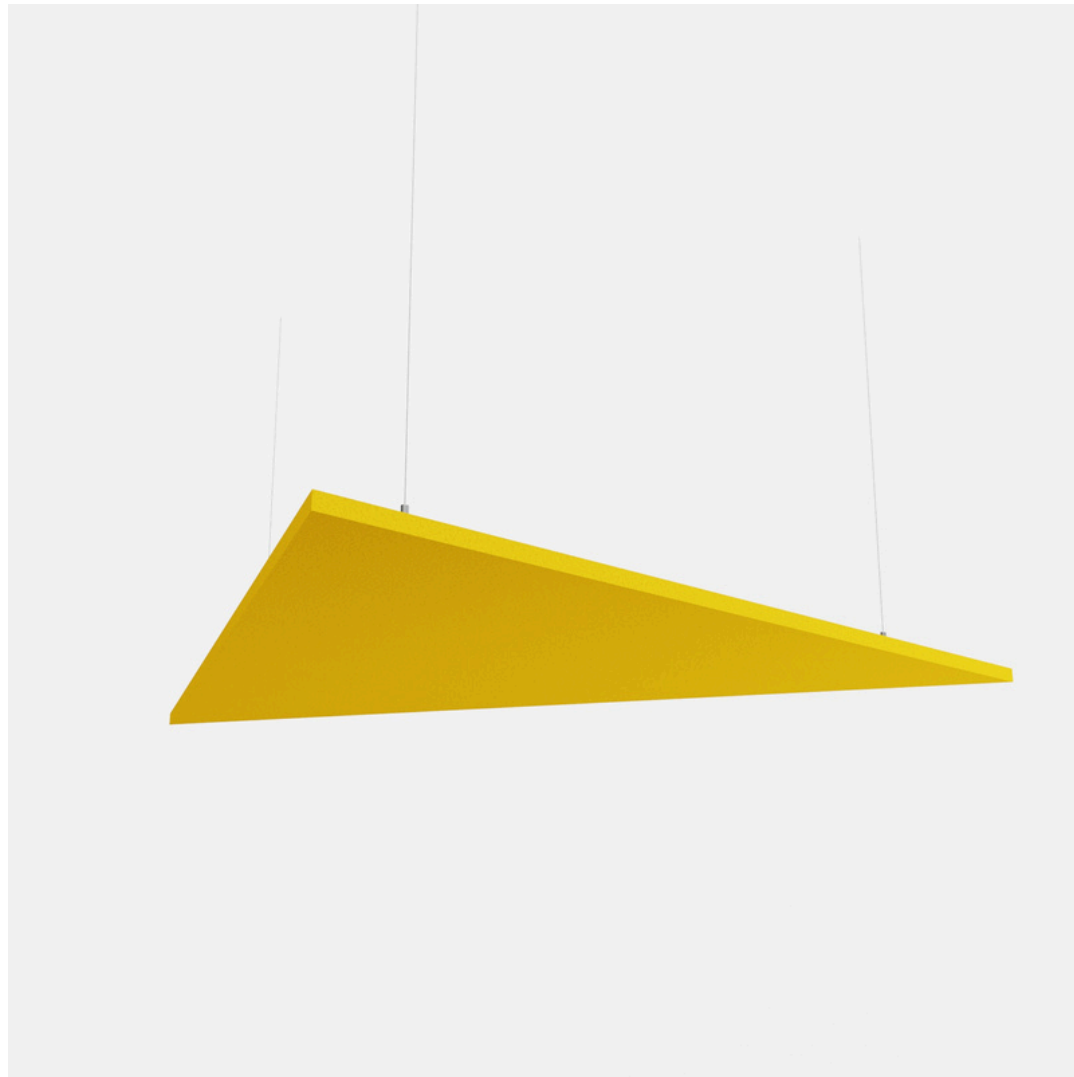
## Tonus Raft Hexagon

The Hexagon-shaped PET acoustic ceiling raft combines modern design with exceptional sound absorption, making it a unique addition to any space. Made from premium PET felt, its geometric form enhances both the acoustics and aesthetics of your room.

1200 x 1200 x 24 (mm)

SOLD IN PACKS OF 2





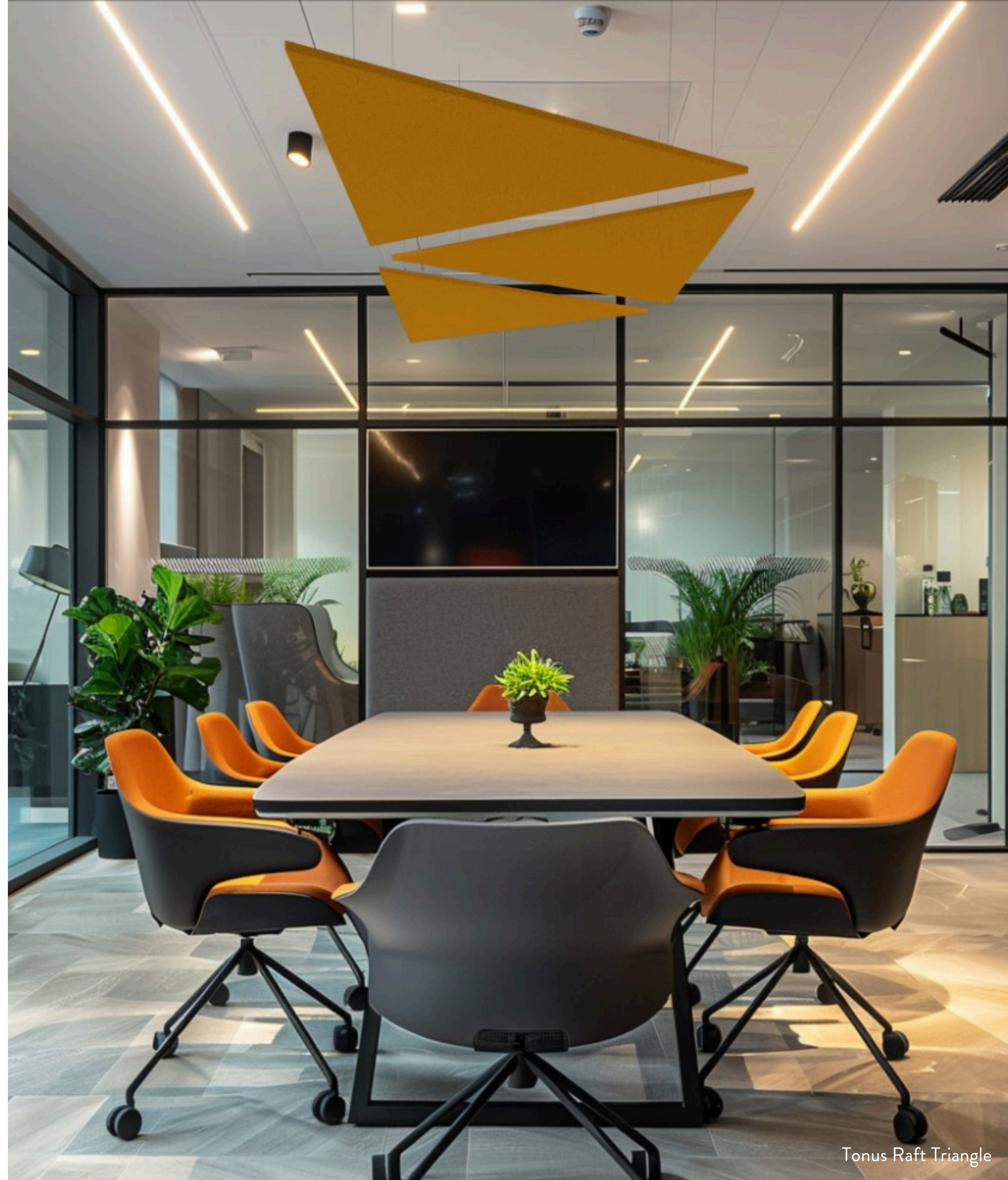
---

## Tonus Raft Triangle

Tonus Raft Triangle offers a distinctive and stylish solution to sound absorption, enhancing both form and function in your space. Crafted from high-quality PET felt, its angular design adds a unique visual appeal while effectively improving room acoustics.

1200 x 1200 x 24 (mm)

SOLD IN PACKS OF 2





# Transformative acoustic solution

Tonus Raft is a sophisticated solution for managing acoustics in diverse environments, deliberately cut and offered in multiple shapes that effectively reduce unwanted echo and reverberation. Crafted from compressed polyester made from recycled plastic bottles, this advanced sound-absorbing ceiling raft offers both high performance and eco-friendly benefits.



# Installation

## How to install Tonus Raft

### Step 1. Prepare Hanging Kit:

- Arrange the necessary components from the hanging kit, including spiral hooks, a 2m cable, and eyelet hooks.

### Step 2. Prepare Top Hat:

- Determine the appropriate placement area on the soffit, mark the location and install the top hat and adjustable wire hanger kit securely using appropriate fasteners.

### Step 3. Position Hooks:

- Space the spiral hooks approximately 200mm inward from the corner edges of the Tonus Raft panel.

### Step 4. Insert Hooks:

- Screw the spiral hooks into the rear of the panel, ensuring they are firmly attached.

### Step 5. Connect Cables:

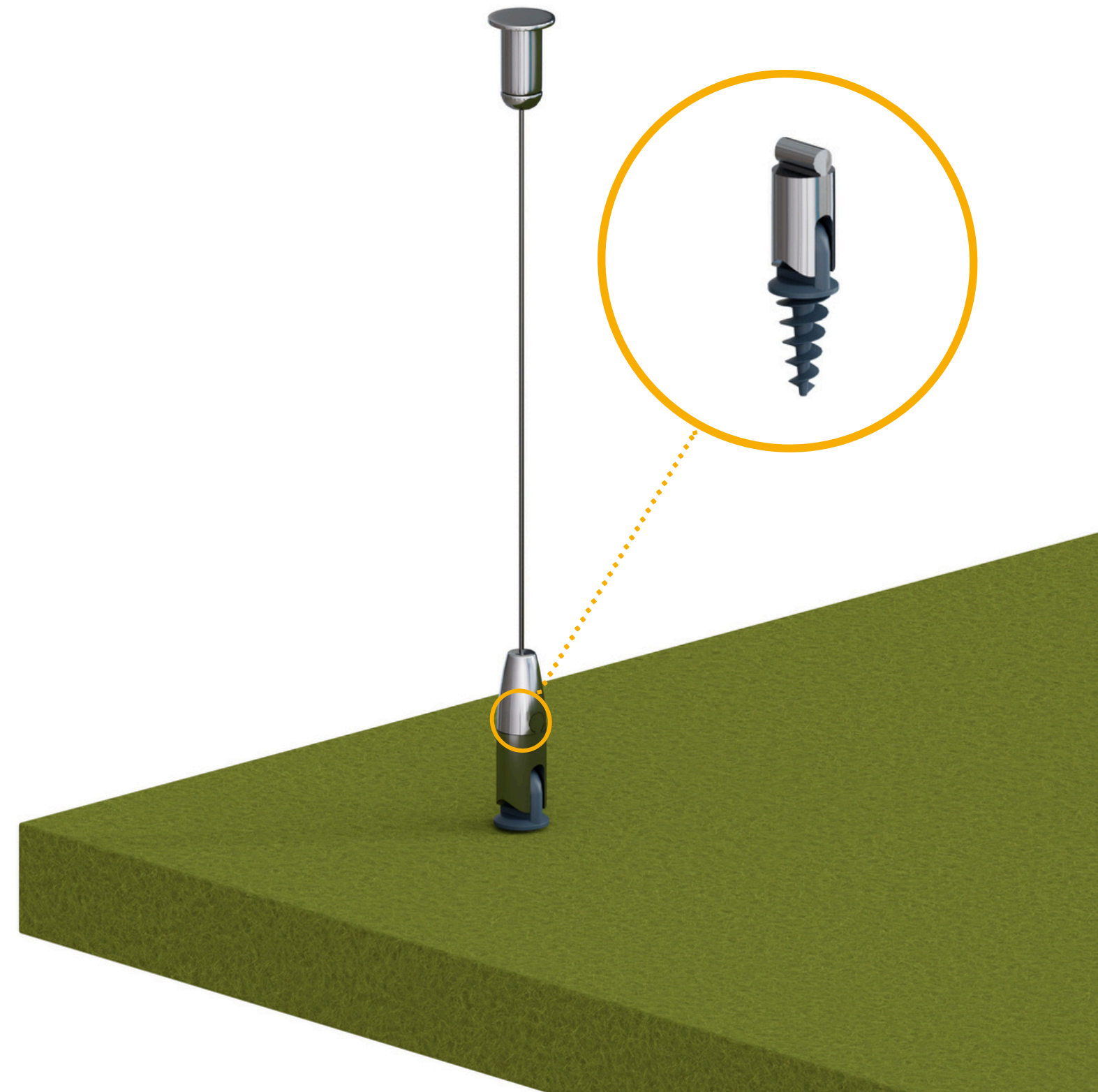
- Thread the cables through the eyelet hooks, ensuring a secure connection.

### Step 6. Connect Raft to Hanger:

- Lift the raft and align it with the wire hanging kit, attach the spiral hooks to the clip mechanism.

### Step 7. Level Adjustment:

- Adjust the height and level of the raft by pressing down on the mechanism located on the top side of the clip, this action releases tension on the wire, allowing for adjustments.





## Tonus Raft **Materials**

Tonus Raft core material is a compressed polyester manufactured using post-consumer recycled polyester from plastic bottles.

Polyester Felt (PET)



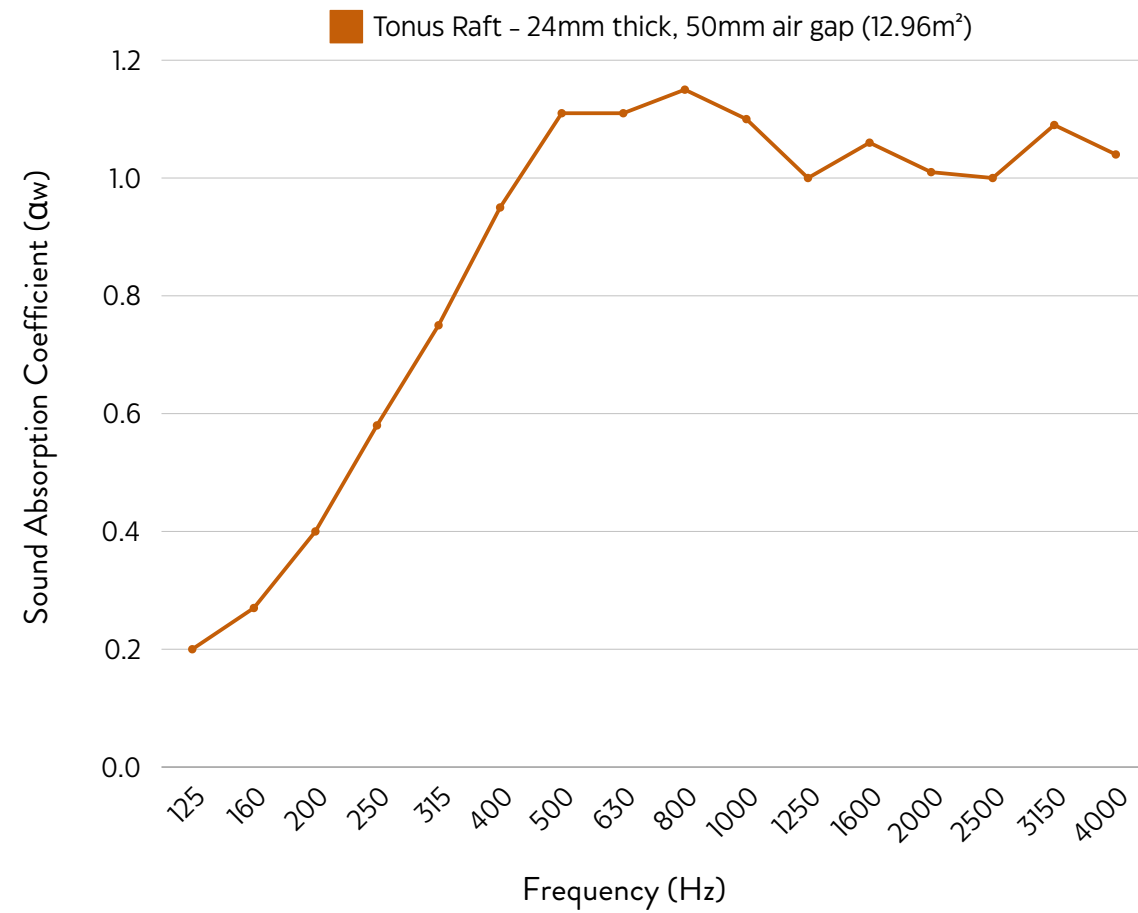
Recycled Plastic Bottles





# Performance Acoustic Results

Tonus Raft has great acoustic properties and offers a high level of sound absorption to reduce unwanted echo and reverberation.



Tonus Raft - 24mm thick, 50mm air gap (12.96m <sup>2</sup> )																
Frequency (Hz)	125	160	200	250	315	400	500	630	800	1000	1250	1600	2000	2500	3150	4000
Absorption Coefficient (αw)	0.20	0.27	0.40	0.58	0.75	0.95	1.11	1.11	1.15	1.10	1.00	1.06	1.01	1.00	1.09	1.04
<b>αw 0.90 up to Class A</b> Calculated to EN ISO 11654:1997 <b>NRC 0.95</b> Calculated to ASTM C 423-01																







## Product Specification



### Fire

Tonus Raft core board has been tested and offers EN 13501-1:2007+A1:2009 Fire classification of construction products and building elements—Part 1: Classification using data from reaction to fire tests, Class B.



### Weight

Tonus Raft weighs 4.5kg/m<sup>2</sup>. All weights are given as approximations.



### Acoustic Performance

Tonus Raft has been tested and offers up to Class A acoustic performance with a 0.95 NRC rating.



Single-polymer  
& recyclable



Durable & moisture  
resistant



Oeko-tex  
certified



Easy  
cleaning



Eco  
friendly



Printable



Sound  
absorbing



Fire  
retardant



Impact  
Resistant

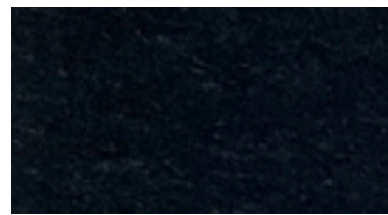


# Colours

Tonus Raft is available in a large range of standard felt colours. Choose from a selection of dark, nude, vibrant and marble tones to best suit your space.



Camel Ivory



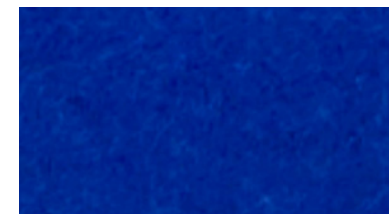
Black



Charcoal Grey



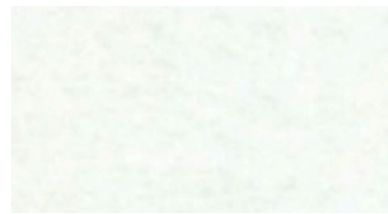
Cyan



Dark Blue



Green



White



Light Grey



Light Blue



Marble Beige



Marble Green



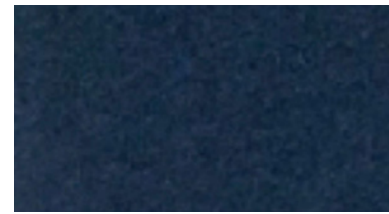
Red



Marble Red



Marble Smoke Blue



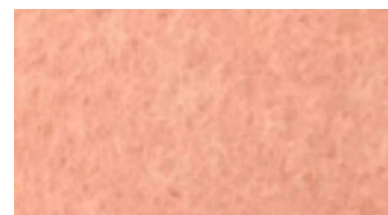
Navy



Mild Brown



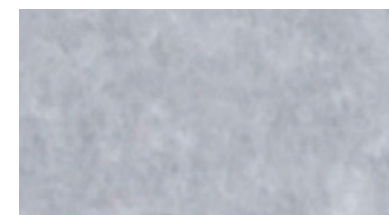
Orange



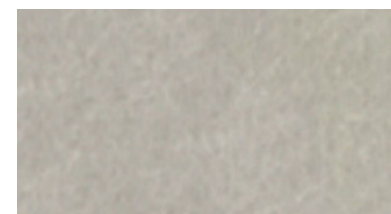
Pink



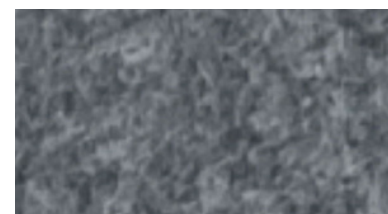
Purple



Stone



Silver Savoya



Dark Grey



Yellow

## Samples

If you would like a closer look at our Tonus colours, please get in touch with a member of our team.



## Storage & Handling

Protect Tonus Raft from excessive moisture during storage and handling. Avoid placing or stacking items on top of the rafts to prevent damage. Handle with clean hands or gloves to avoid marks. Store in a clean, uncluttered area to prevent accidental damage.



## Aftercare & Maintenance

Tonus Rafts requires minimal maintenance post-installation. For cleaning, use a damp cloth as needed and dust periodically to keep the rafts looking their best.

FIND YOUR  
**HARMONY**





# FAQs

## **How many Rafts do I need?**

Determining the optimal quantity of Tonus Raft isn't an exact science. Broadly, increased surface coverage leads to greater sound absorption and reduced echo. As a general guideline, aiming to cover approximately 30% to 50% of the ceiling area typically results in effective sound absorption.

## **Do you make this raft in custom shapes and sizes?**

Yes, although we have a standard range of the most popular sizes it is possible to have a customised shape or size of the Tonus Raft to suit your requirements.

## **Do I need any screws or equipment to install these rafts?**

The only fixings you will need in addition to the supplied hanging kits are the screws to attach the Top Hat fixing to the soffit. We do not supply these screws as the appropriate screws will dependant on your soffit structure ie. Plasterboard, concrete, timber which your local DIY store will be able to recommend.

## **Is there a warranty with Tonus Raft?**

Our Tonus Raft comes with a one-year manufacturer's warranty, providing coverage for any defects in materials or workmanship.

## **How much difference will these rafts make to the acoustics in my space?**

The Tonus Raft effectively absorbs direct sound and reflections from ceilings and upper wall sections. While it doesn't address noise transfer between rooms, it noticeably diminishes noise within an open area. Installing the appropriate number of baffles achieves significant results, reducing echo and reverberation for a quieter, more tranquil atmosphere.



# CONTACT US

01977 525974

[info@theacousticsstore.co.uk](mailto:info@theacousticsstore.co.uk)

[www.theacousticsstore.co.uk](http://www.theacousticsstore.co.uk)

c/o Qic Trims Radclive Road,  
Gawcott Buckingham, MK18 4BL

**THE ACOUSTICS STORE**  
*SOUNDS JUST RIGHT*