

Tonus V Groove





Tonus V Groove **PET Felt Acoustic Wall Panel**

Tonus V Groove brings both functionality and aesthetics to your space with its high-performance V-cut PET wall panel design. This innovative panel not only reduces echo and reverberation but also adds texture, dimension, and style to any room.



Tonus V Groove

Product Features

- High-performance V-cut PET wall panel
 - Lightweight and easy to install
 - Manufactured from compressed recycled polyester felt
 - Versatile for multiple applications
 - Controls echo and reverberation
 - Quick and easy installation
-



Tonus V Groove - Diagonal Left

This rectangular V-cut panel, crafted from compressed polyester felt, offers excellent acoustic absorption to effectively reduce reverberation and minimise unwanted echo and background noise.

2400 x 1200 x 12 (mm)
2400 x 1200 x 24 (mm)

SOLD PER PANEL

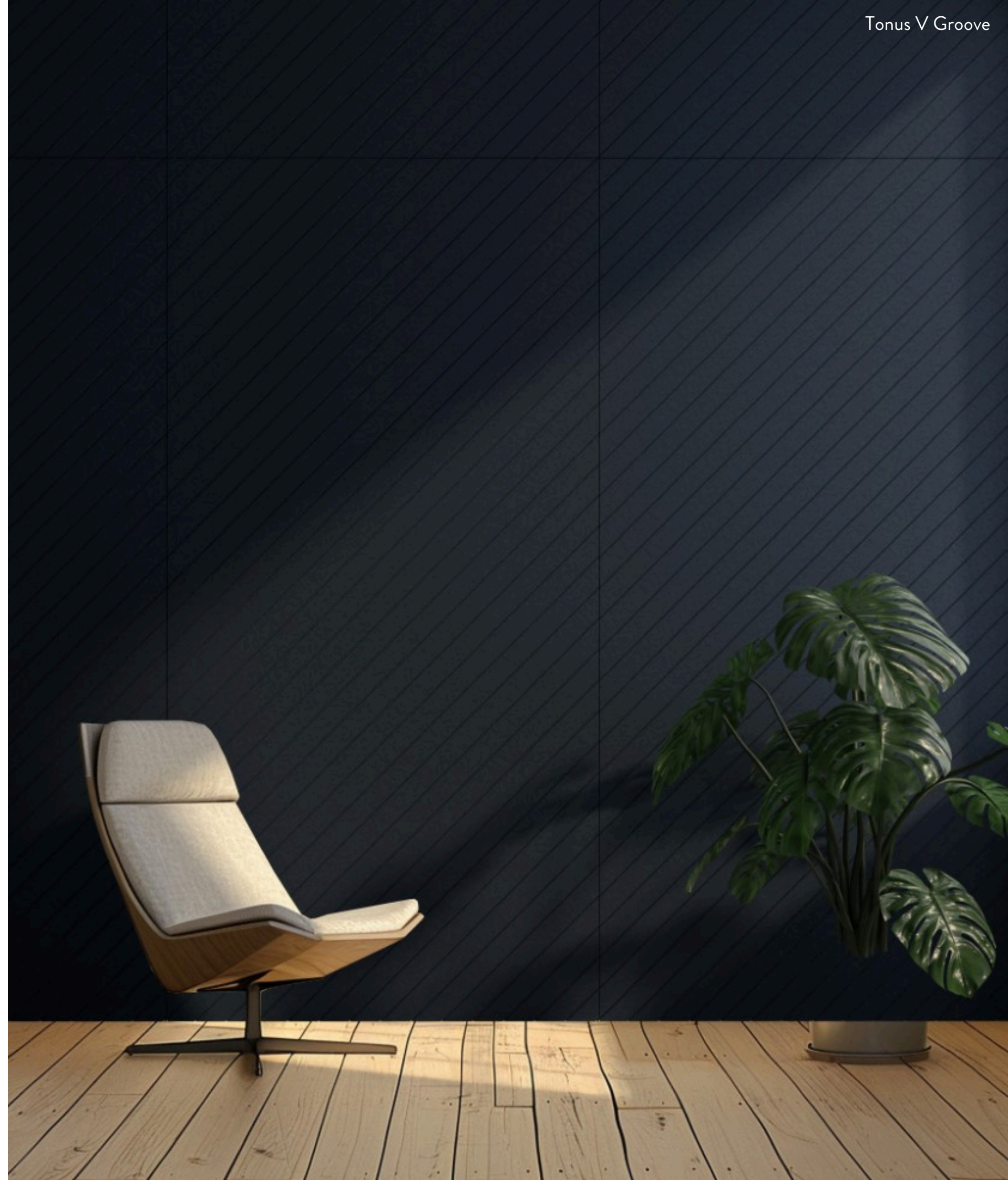


Tonus V Groove - Diagonal Right

The Tonus V Groove Diagonal Right brings functionality and aesthetics together in your space with its high-performance V-cut PET wall panel design.

2400 x 1200 x 12 (mm)
2400 x 1200 x 24 (mm)

SOLD PER PANEL





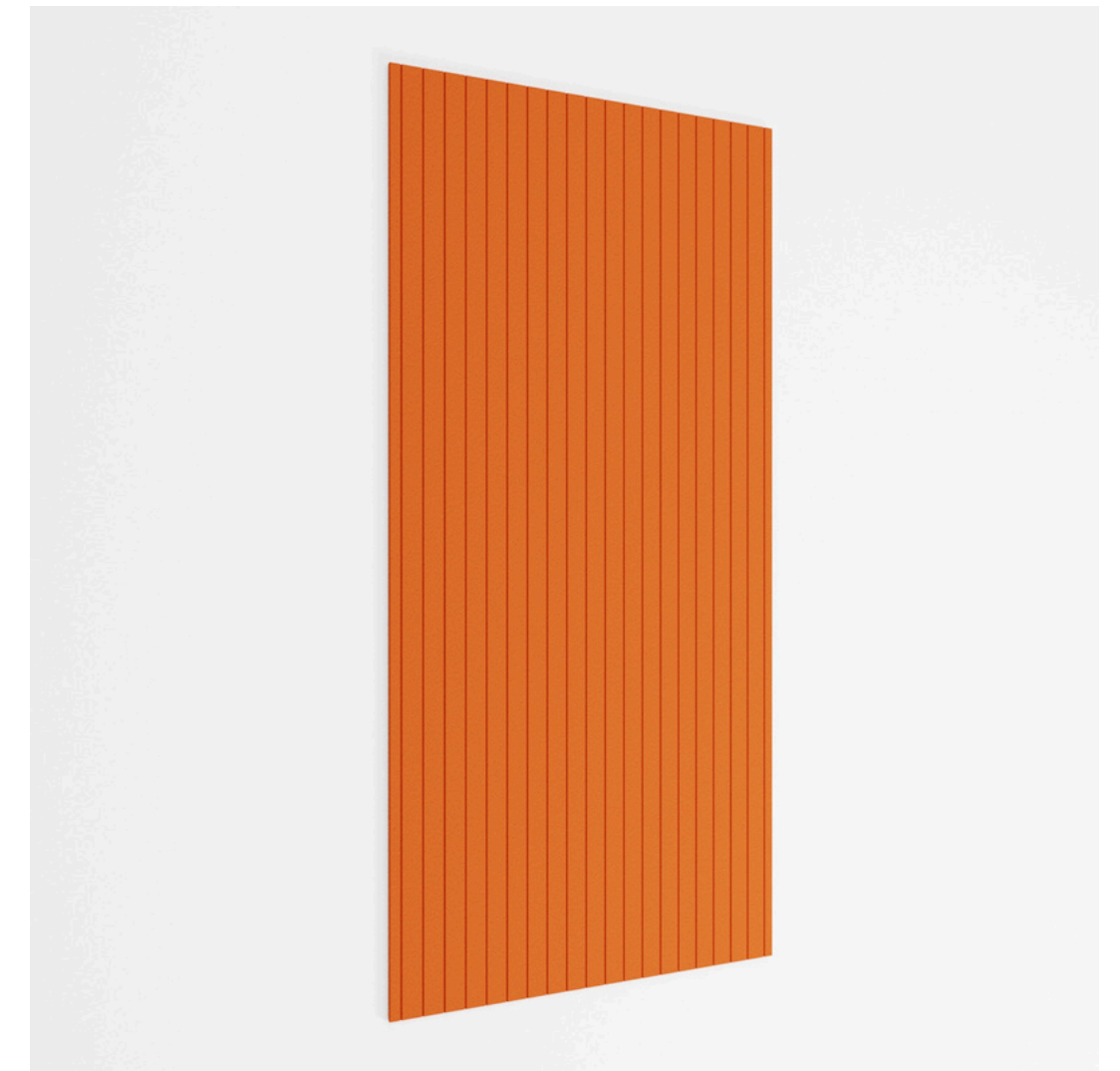
Tonus V Groove - Vertical

Versatile and easy to install, the Tonus V Groove Vertical is suitable for a wide range of applications, from offices and conference rooms to residential spaces and entertainment venues.

2400 x 1200 x 12 (mm)

2400 x 1200 x 24 (mm)

SOLD PER PANEL



Tonus V Groove - Vertical Wide

Transform your space with Tonus V Groove Vertical Wide and enjoy the perfect fusion of acoustic effectiveness and design sophistication. Its lightweight composition simplifies installation, while the intricate pattern carved into the panel elevates visual allure.

2400 x 1200 x 12 (mm)

2400 x 1200 x 24 (mm)

SOLD PER PANEL



Tonus V Groove - Vertical Irregular

The Tonus V Groove Vertical Irregular combines practicality and aesthetics, introducing a high-performance V-cut PET wall panel design to your space. This innovative panel not only mitigates echo and reverberation but also introduces texture, depth, and style to any room

2400 x 1200 x 12 (mm)

2400 x 1200 x 24 (mm)

SOLD PER PANEL



Transform your space

Elevate your space with Tonus V Groove, and experience the perfect blend of acoustic efficiency and design elegance.

This innovative panel not only reduces echo and reverberation but also adds texture, dimension, and style to any room. Crafted from compressed recycled polyester felt, it offers both sustainability and durability, ensuring long-lasting acoustic performance while contributing to environmental conservation.



Installation

How to install Tonus V Groove

Step 1. Prepare for Installation:

- Prepare the wall surface by removing any dust or debris.
- Get ready your chosen grab adhesive

Step 2. Prepare for Installation:

- Lay all panels side by side temporarily to ensure that all rows of grooves are aligned as they would appear on the wall.
- Check the depth of the grooves on each edge of the panel matches the adjacent grooves on the next panel, rearrange if necessary for matching depths.

Step 3. Apply Adhesive:

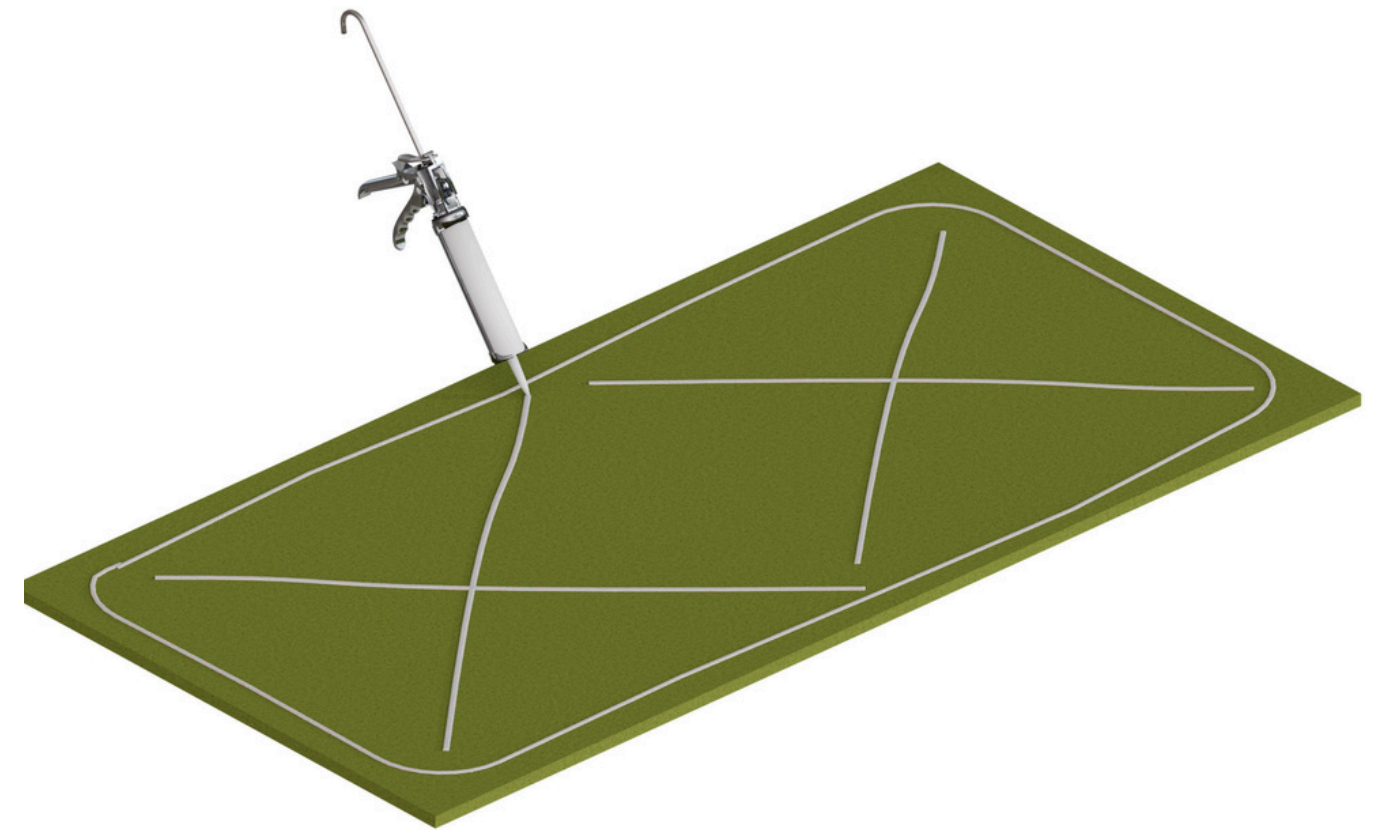
- Apply adhesive generously to the back of the panel and the surface where it will be fixed.

Step 4. Attach Panel:

- Press the Tonus V Groove panel firmly onto the surface.
- Hold it in place for a few minutes to allow the adhesive to set.

Step 5. Cutting Instructions:

- Use a circular saw with a narrow blade or a sharp utility knife.
- For straight cuts, lay the panel face-down and cut from back to front.
- Use masking tape or a straight edge for marking the cutting line.
- For curved cuts, use a reverse toothed jigsaw blade to preserve the surface.



Tonus V Groove **Materials**

Tonus V Groove core material is a compressed polyester manufactured using post-consumer recycled polyester from plastic bottles.

Polyester Felt (PET)

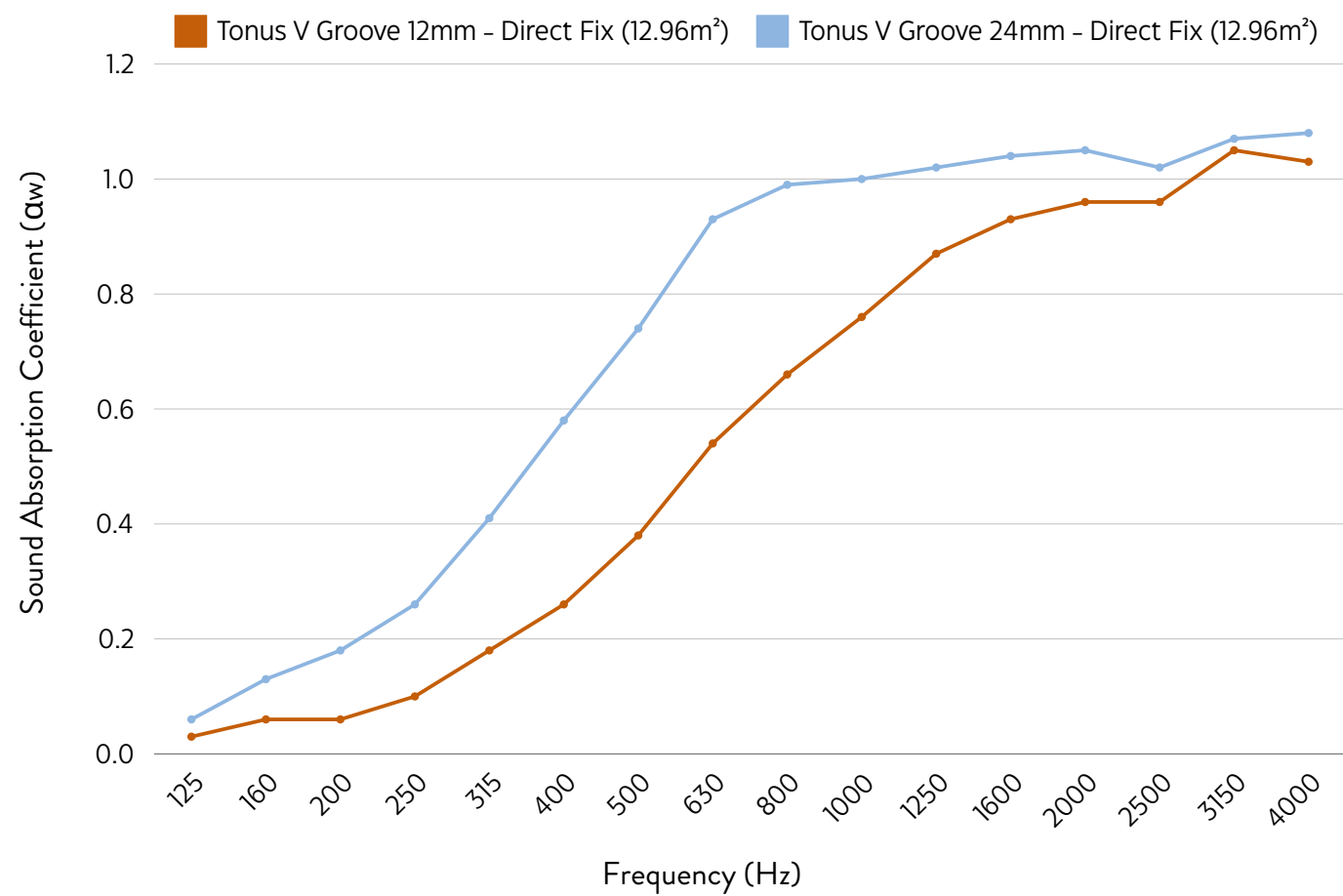


Recycled Plastic Bottles



Performance Acoustic Results

Our Tonus V Groove has great acoustic properties and offers a high level of sound absorption to reduce unwanted echo and reverberation.



Absorption Coefficient (α _w)																
Frequency (Hz)	125	160	200	250	315	400	500	630	800	1000	1250	1600	2000	2500	3150	4000
Tonus V Groove 12mm	0.05	0.08	0.19	0.33	0.50	0.64	0.83	0.92	0.96	0.99	1.05	0.98	1.02	1.04	1.05	1.05
Tonus V Groove 24mm	0.06	0.13	0.18	0.26	0.41	0.58	0.74	0.93	0.99	1.00	1.02	1.04	1.05	1.02	1.07	1.08

12mm: α_w 0.40 Class D <small>Calculated to EN ISO 11654:1997</small> NRC 0.55 <small>Calculated to ASTM C 423-01</small>	24mm: α_w 0.60 Class C <small>Calculated to EN ISO 11654:1997</small> NRC 0.75 <small>Calculated to ASTM C 423-01</small>
--	--



Product Specification



Fire

Tonus V Groove has been tested to EN 13501-1:2007+A1:2009 Fire classification of construction products and building elements—Part 1: Classification using data from reaction to fire tests, Class B.



Weight

Tonus V Groove weighs 4.5kg/m². All weights are given as approximations.



Acoustic Performance

Tonus V Groove has been tested and offers up to Class C acoustic performance with an 0.55-0.75 NRC rating depending on panel thickness.



Single-polymer & recyclable



Durable & moisture resistant



Oeko-tex certified



Easy cleaning



Eco friendly



Printable



Sound absorbing



Fire retardant



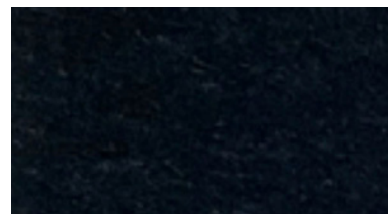
Impact Resistant

Colours

Tonus V Groove is available in a large range of standard felt colours. Choose from a selection of dark, nude, vibrant and marble tones to best suit your space.



Camel Ivory



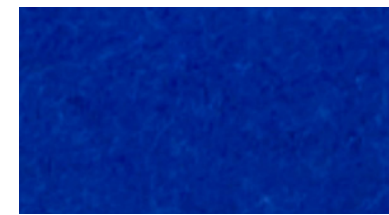
Black



Charcoal Grey



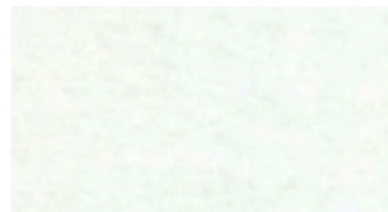
Cyan



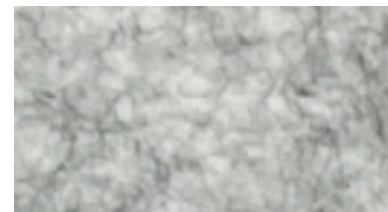
Dark Blue



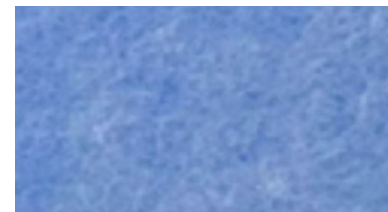
Green



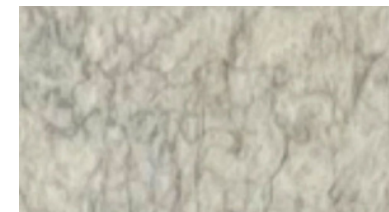
White



Light Grey



Light Blue



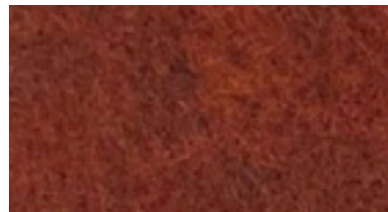
Marble Beige



Marble Green



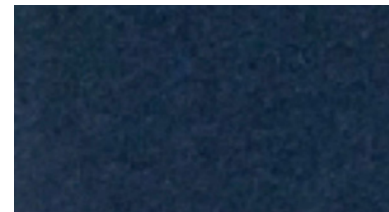
Red



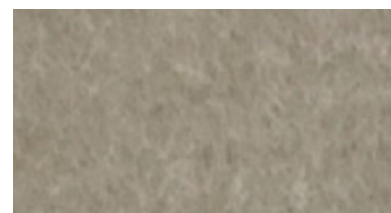
Marble Red



Marble Smoke Blue



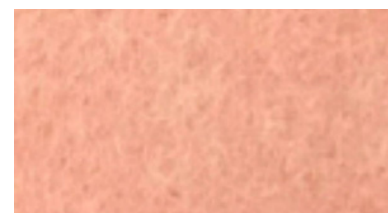
Navy



Mild Brown



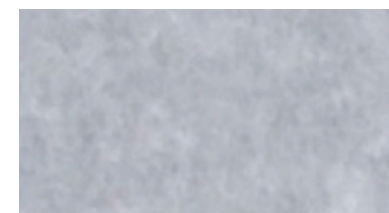
Orange



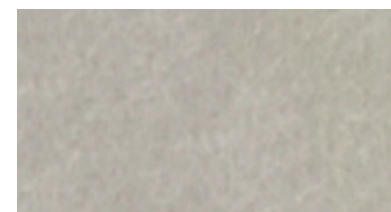
Pink



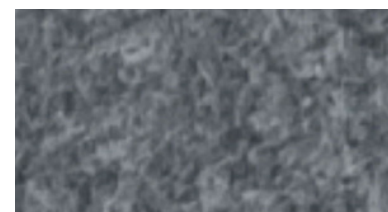
Purple



Stone



Silver Savoya



Dark Grey



Yellow

Samples

If you would like a closer look at our Tonus colours, please get in touch with a member of our team.

Storage & Handling

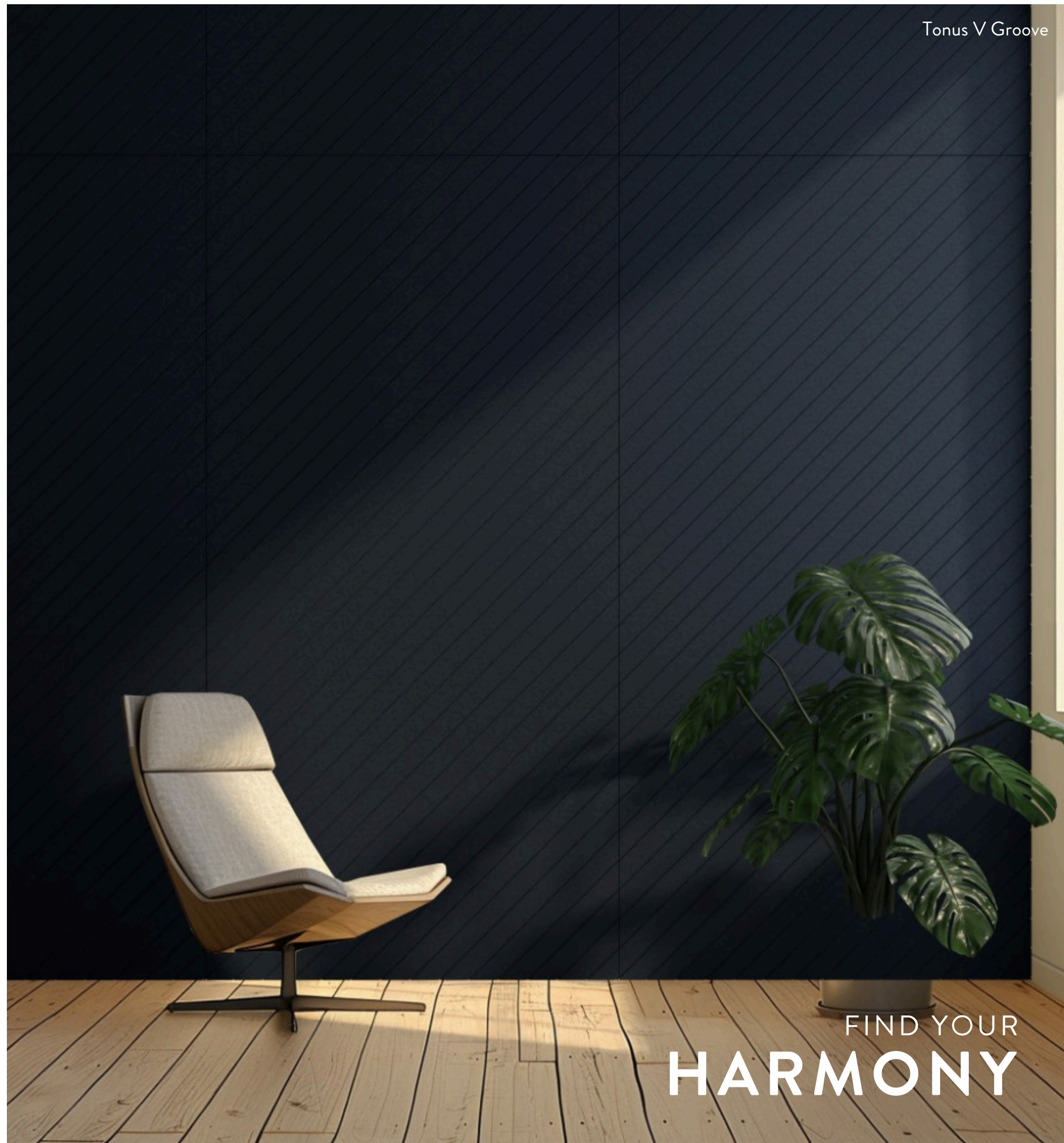
Protect Tonus V Groove from excessive moisture during storage and handling. Avoid placing or stacking items on top of the panels to prevent damage. Handle with clean hands or gloves to avoid marks. Store in a clean, uncluttered area to prevent accidental damage.

Cutting

If cutting, use a circular saw with a fine-toothed blade (at least 80 teeth) or a sharp utility knife. To make straight cuts, place Tonus V Groove face-down and cut from back to front. Masking tape can help mark the cutting line, or you can use a reverse-toothed jigsaw blade for curved cuts to maintain a clean top surface.

Aftercare & Maintenance

Tonus V Groove panels requires minimal maintenance post-installation. For cleaning, use a damp cloth as needed and dust periodically to keep the panels looking their best.



FIND YOUR
HARMONY



FAQs

Do you make this wall panel in custom shapes and sizes?

Yes, although we have a standard range of the most popular sizes it is possible to have a customised shape or size of the Tonus V Groove to suit your requirements.

Is there warranty?

Our Tonus V Groove comes with a one-year manufacturer's warranty, providing coverage for any defects in materials or workmanship.

How much difference will these wall panels make to the acoustics in my space?

The Tonus V Groove effectively absorbs direct sound and reflections. While it doesn't address noise transfer between rooms, it noticeably diminishes noise within an open area. Installing the appropriate number of panels achieves significant results, reducing echo and reverberation for a quieter, more tranquil atmosphere.

What space is the Tonus V Groove best suited for?

Tonus V Groove Panels offer versatile solutions for spaces affected by reverberation and echo, particularly those with speech clarity and noise volume issues. Suited for both single panel use or full wall coverings for various environments such as offices, meeting rooms, hotels, restaurants, village halls, schools, lecture theatres, music studios, and rehearsal spaces. These high-performing wall panels effectively enhance room acoustics by addressing noise that is typically at ear level, minimising reverberation and reflected sound.

Can I install Tonus V Groove to the ceiling?

Due to the weight of this product we would not recommend installing on to the ceiling.

CONTACT US

01977 525974

info@theacousticsstore.co.uk

www.theacousticsstore.co.uk

c/o Qic Trims Radclive Road,
Gawcott Buckingham, MK18 4BL

THE ACOUSTICS STORE
SOUNDS JUST RIGHT