

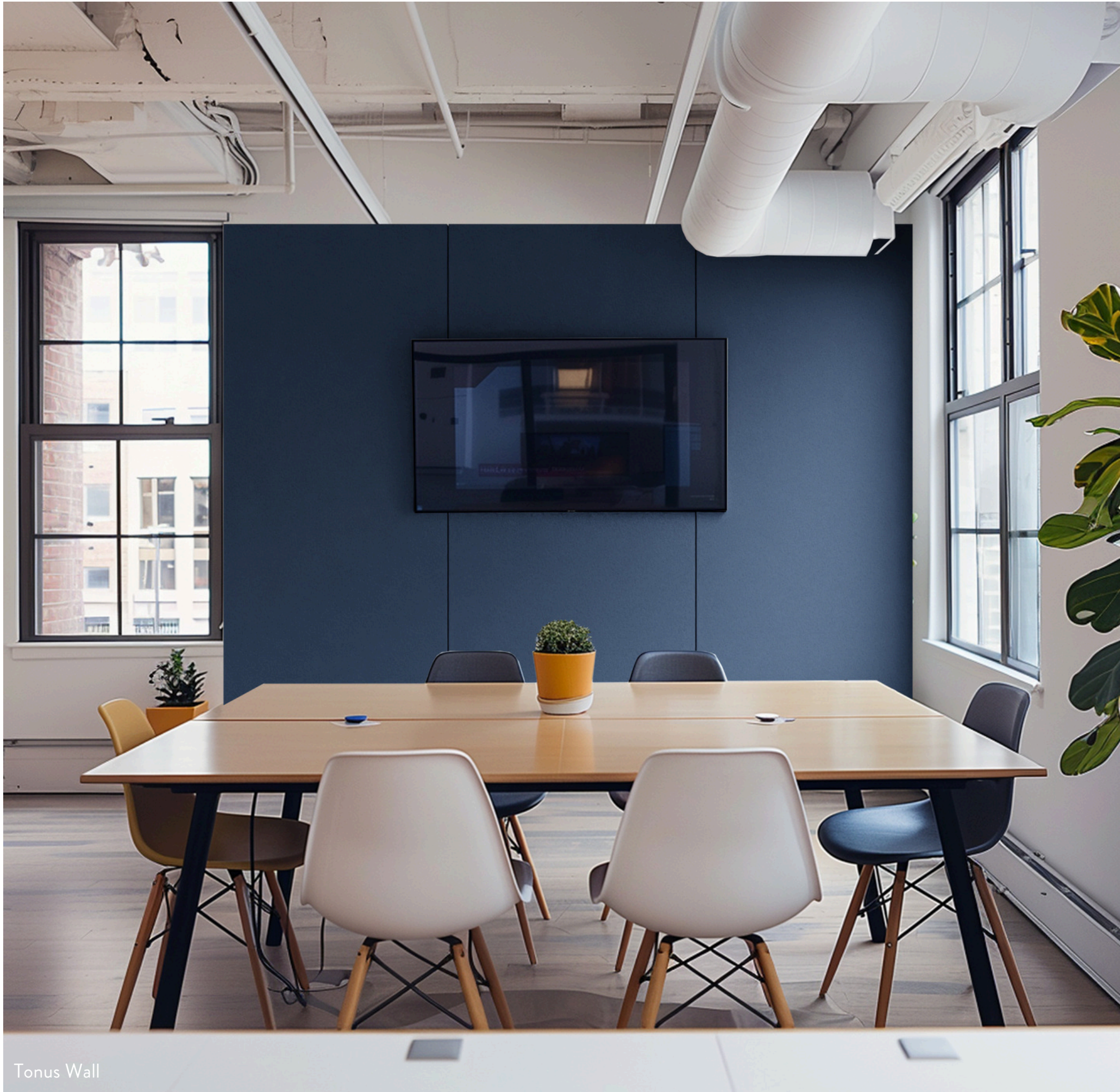
Tonus Wall





Tonus Wall **PET Felt Acoustic Wall Panel**

Tonus Wall is a versatile acoustic solution designed to enhance sound quality in various environments such as offices, conference rooms, home cinemas and educational spaces. Whether you're looking to improve the acoustics of a single wall or an entire space, the Tonus Wall Panel delivers superior performance and a sleek, modern look.



Tonus Wall

Product Features

- Versatile PET sheet suitable for both singular panel use and full-wall coverage
- Excellent acoustic absorption to reduce reverberation
- Lightweight yet semi-rigid panel made from compressed polyester felt
- Perfect for areas with unwanted echo and background noise
- Quick and easy to install using adhesive or screws



Tonus Wall

This rectangular panel, crafted from compressed polyester felt, offers excellent acoustic absorption to effectively reduce reverberation and minimise unwanted echo and background noise. A simple design yet transformative solution.

1800 x 800 x 12 (mm)
1800 x 800 x 24 (mm)
2400 x 1200 x 12 (mm)
2400 x 1200 x 24 (mm)

SOLD PER PANEL

Acoustics made simple

Ideal for areas plagued by noise issues, Tonus Wall Panel provides a practical and aesthetic enhancement to any room. Installation is quick and straightforward, with options to use adhesive or screws, allowing for flexibility and convenience. Whether you're looking to improve the acoustics of a single wall or an entire space, Tonus Wall Panel delivers superior performance and a sleek, modern look.



Installation

The Tonus Wall application process is relatively straightforward and does not require a specialist installer.

How to install Tonus Wall

Step 1. Prepare for Installation:

- Prepare the wall surface by removing any dust or debris.
- Get ready your chosen grab adhesive

Step 2. Prepare for Installation:

- Lay all panels side by side temporarily to ensure that all sizes are aligned as they would appear on the wall.

Step 3. Apply Adhesive:

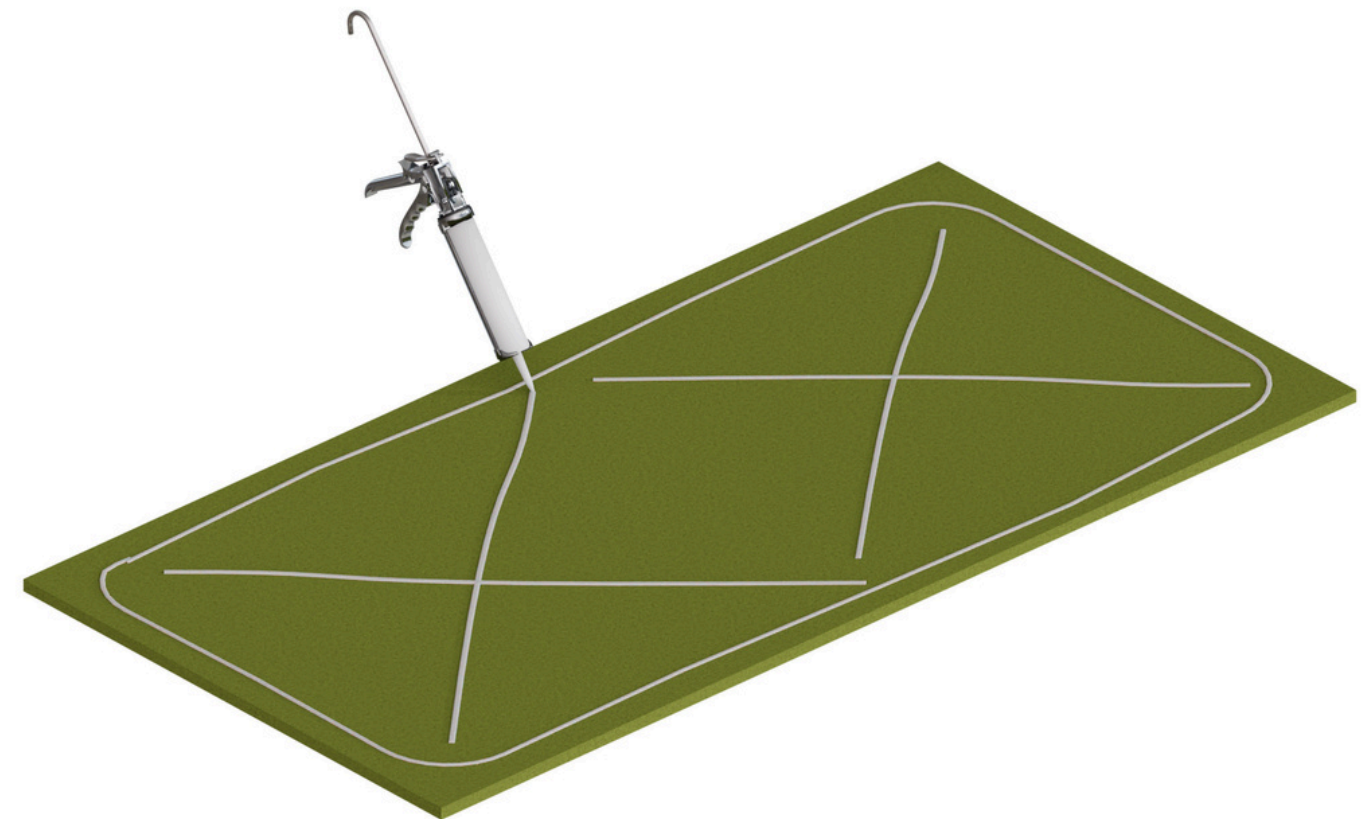
- Apply adhesive generously to the back of the panel and the surface where it will be fixed.

Step 4. Attach Panel:

- Press the Tonus Wall panel firmly onto the surface.
- Hold it in place for a few minutes to allow the adhesive to set.

Step 5. Cutting Instructions:

- Use a circular saw with a narrow blade or a sharp utility knife.
- For straight cuts, lay the panel face-down and cut from back to front.
- Use masking tape for marking the cutting line.
- For curved cuts, use a reverse toothed jigsaw blade to preserve the surface.



Tonus Wall Materials

Tonus Wall Panel core material is a compressed polyester manufactured using post-consumer recycled polyester from plastic bottles.

Polyester Felt (PET)

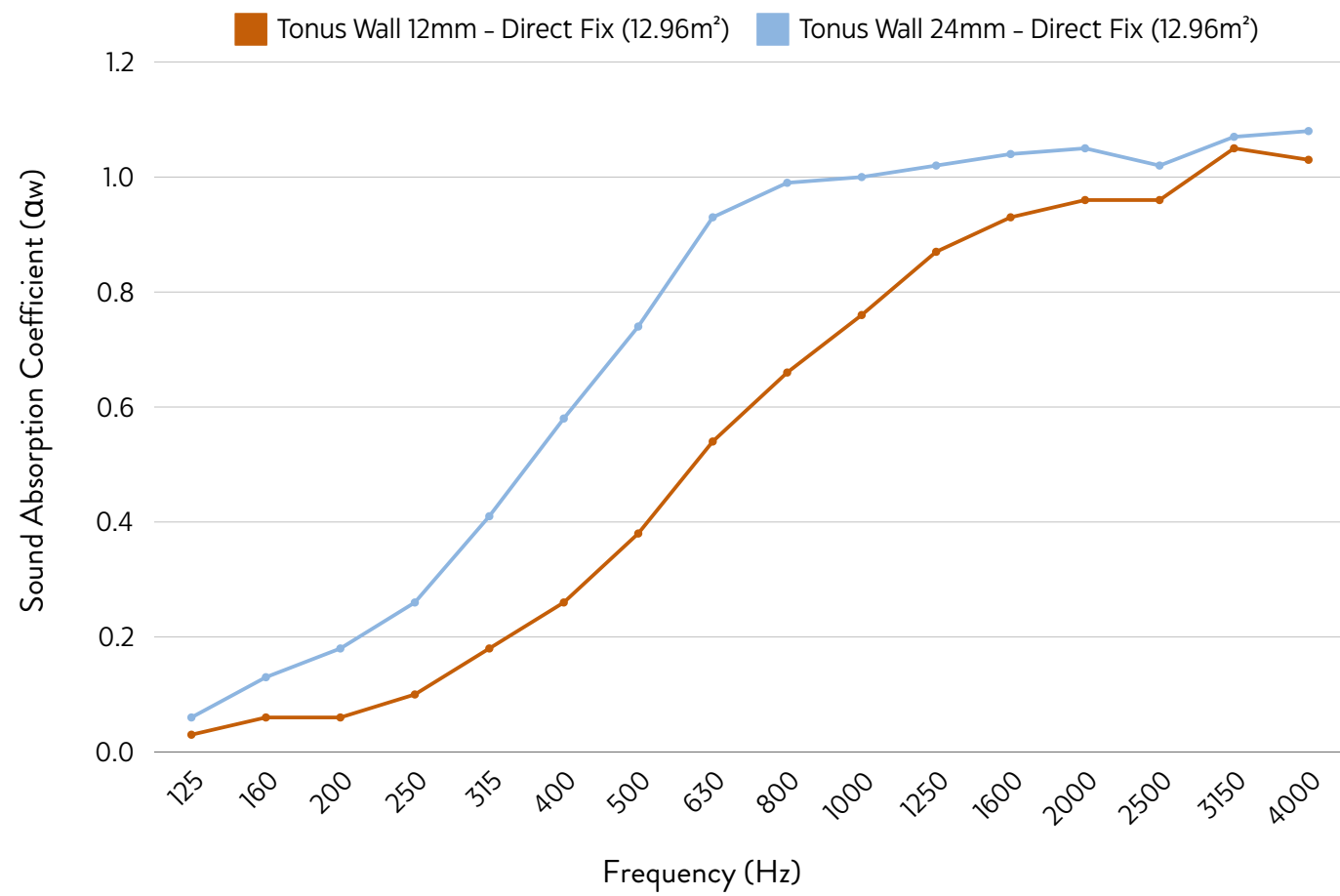


Recycled Plastic Bottles



Performance Acoustic Results

Tonus Wall Panel has great acoustic properties and offers a high level of sound absorption to reduce unwanted echo and reverberation.



Absorption Coefficient (α _w)																
Frequency (Hz)	125	160	200	250	315	400	500	630	800	1000	1250	1600	2000	2500	3150	4000
Tonus Wall 12mm	0.05	0.08	0.19	0.33	0.50	0.64	0.83	0.92	0.96	0.99	1.05	0.98	1.02	1.04	1.05	1.05
Tonus Wall 24mm	0.06	0.13	0.18	0.26	0.41	0.58	0.74	0.93	0.99	1.00	1.02	1.04	1.05	1.02	1.07	1.08

12mm:
α_w 0.40 Class D
Calculated to EN ISO 11654:1997
NRC 0.55
Calculated to ASTM C 423-01

24mm:
α_w 0.60 Class C
Calculated to EN ISO 11654:1997
NRC 0.75
Calculated to ASTM C 423-01





Product Specification



Fire

Tonus Wall has been tested to EN 13501-1:2007+A1:2009 Fire classification of construction products and building elements—Part 1: Classification using data from reaction to fire tests, Class B.



Weight

Tonus Wall weighs 4.5kg/m². All weights are given as approximations.



Acoustic Performance

Tonus Wall has been tested and offers up to Class C acoustic performance with an 0.55-0.75 NRC rating depending on panel thickness.



Single-polymer
& recyclable



Durable & moisture
resistant



Oeko-tex
certified



Easy
cleaning



Eco
friendly



Printable



Sound
absorbing



Fire
retardant



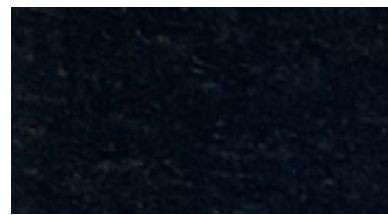
Impact
Resistant

Colours

Tonus Wall is available in a large range of standard felt colours. Choose from a selection of dark, nude, vibrant and marble tones to best suit your space.



Camel Ivory



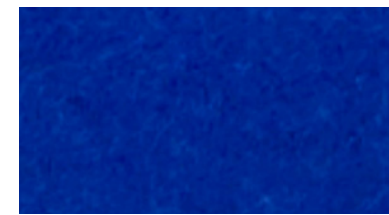
Black



Charcoal Grey



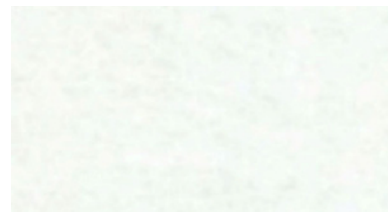
Cyan



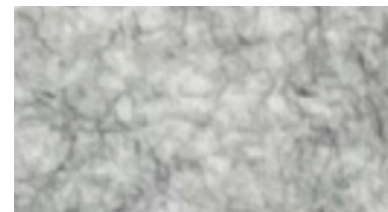
Dark Blue



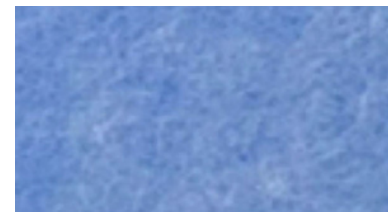
Green



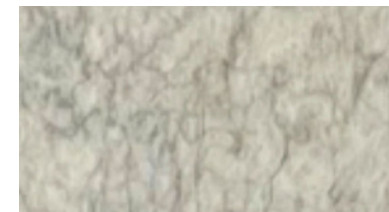
White



Light Grey



Light Blue



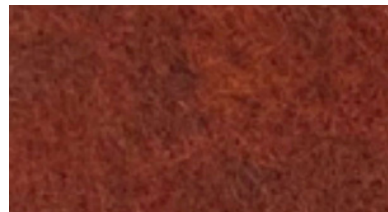
Marble Beige



Marble Green



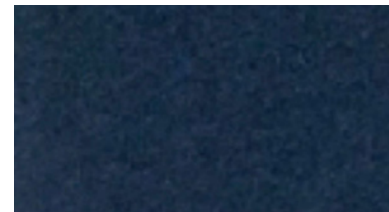
Red



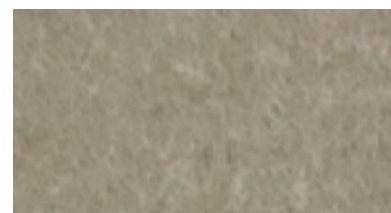
Marble Red



Marble Smoke Blue



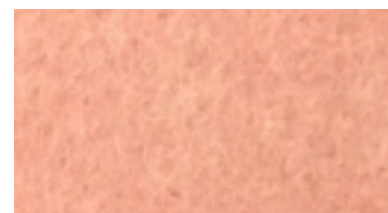
Navy



Mild Brown



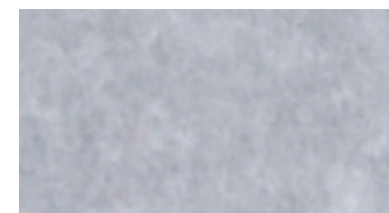
Orange



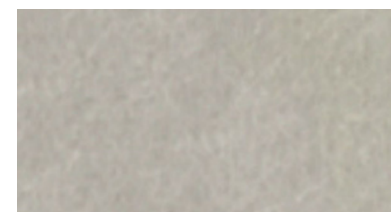
Pink



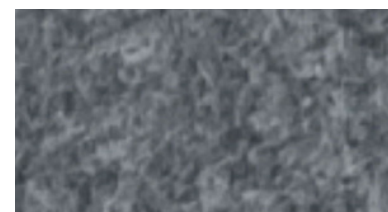
Purple



Stone



Silver Savoya



Dark Grey



Yellow

Samples

If you would like a closer look at our Tonus colours, please get in touch with a member of our team.

Storage & Handling

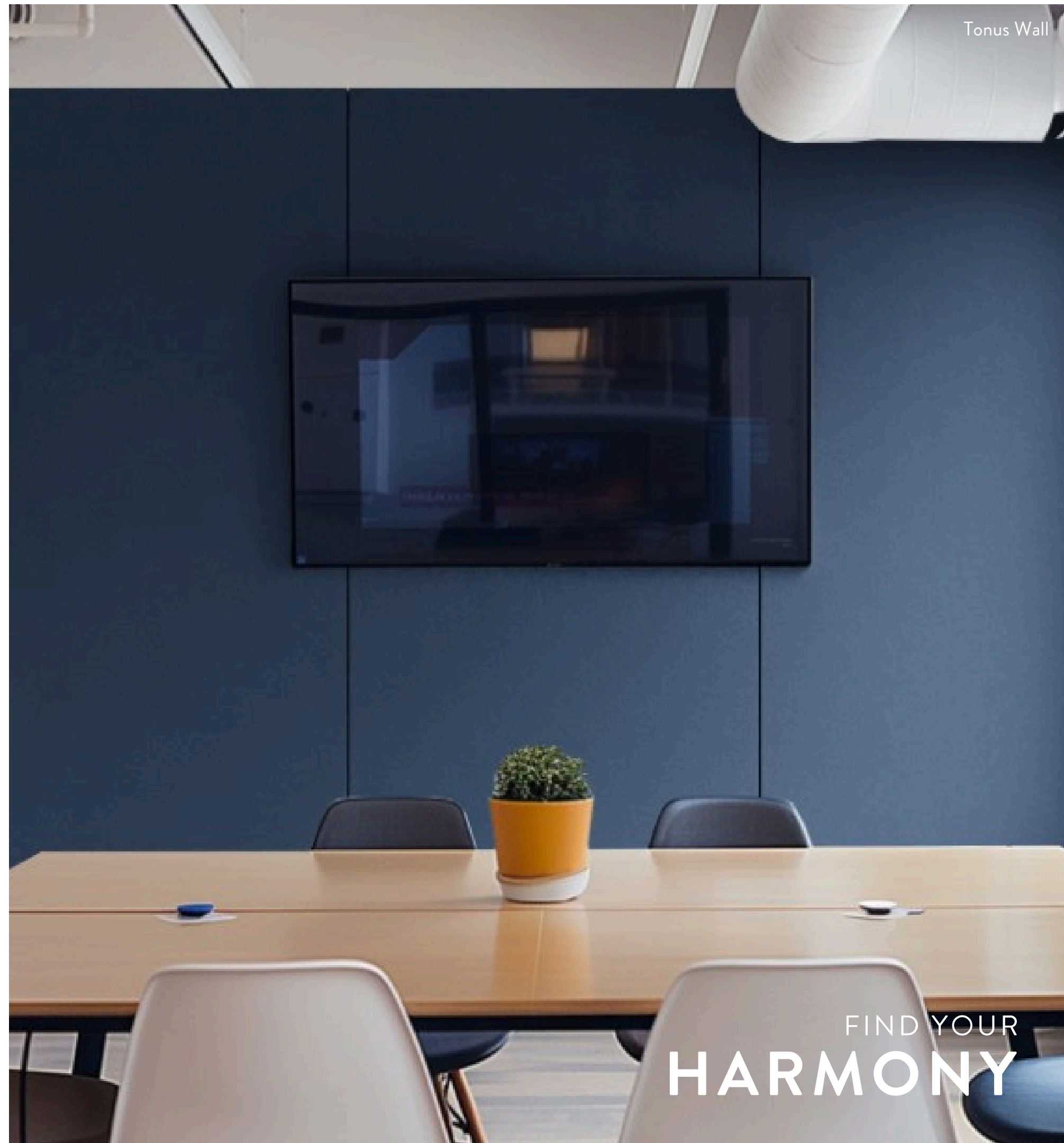
Protect Tonus Wall from excessive moisture during storage and handling. Avoid placing or stacking items on top of the panels to prevent damage. Handle with clean hands or gloves to avoid marks. Store in a clean, uncluttered area to prevent accidental damage.

Cutting

If cutting, use a circular saw with a fine-toothed blade (at least 80 teeth) or a sharp utility knife. To make straight cuts, place Tonus Wall face-down and cut from back to front. Masking tape can help mark the cutting line, or you can use a reverse-toothed jigsaw blade for curved cuts to maintain a clean top surface.

Aftercare & Maintenance

Tonus Wall panels requires minimal maintenance post-installation. For cleaning, use a damp cloth as needed and dust periodically to keep the panels looking their best.



FIND YOUR
HARMONY



FAQs

Do you make this wall panel in custom shapes and sizes?

Yes, although we have a standard range of the most popular sizes it is possible to have a customised shape or size of Tonus Wall to suit your requirements.

How much difference will these wall panels make to the acoustics in my space?

The Tonus Wall Panel effectively absorbs direct sound and reflections. While it doesn't address noise transfer between rooms, it noticeably diminishes noise within an open area. Installing the appropriate number of baffles achieves significant results, reducing echo and reverberation for a quieter, more tranquil atmosphere.

Is there warranty with the Tonus Wall Panel?

Our Tonus Wall Panel comes with a one-year manufacturer's warranty, providing coverage for any defects in materials or workmanship.

What space is the Tonus Wall Panel best suited for?

Tonus Wall Panels offer versatile solutions for spaces affected by reverberation and echo, particularly those with speech clarity and noise volume issues. Suited for various environments such as offices, meeting rooms, hotels, restaurants, village halls, schools, lecture theatres, music studios, and rehearsal spaces. These high-performing wall panels effectively enhance room acoustics by addressing noise that is typically at ear level, minimising reverberation and reflected sound. They are especially beneficial in areas with available wall space.

Where is this product shipped from?

The Tonus Wall Panel is manufactured in and shipped from the UK.

CONTACT US

01977 525974

info@theacousticsstore.co.uk

www.theacousticsstore.co.uk

c/o Qic Trims Radclive Road,
Gawcott Buckingham, MK18 4BL

THE ACOUSTICS STORE
SOUNDS JUST RIGHT