

ARCHITECTURAL CONCRETE

VHCT[®] **urbicco**
design







**ARCHITECTURAL CONCRETE Very High Concrete Technology.
MODERN DESIGN**

Application

- INTERIORS , FACADES, FENCES AND SMALL ARCHITECTURE

Architectural concrete VHCT is a simple form of interiors with a modern character. Precise technology allows to obtain slabs with high aesthetic values. Surfaces of the concrete can be smooth, porous, coloured or with exposed aggregate. This gives the possibility for a wide range of applications in interiors and facades. Concretes combine quality, aesthetics and naturalness. A wide palette of colors, easy drilling and cutting allow creating interesting arrangements.

High frost resistance, low water absorption, resistance to UV radiation architectural concrete is perfect for facades or fences. VHCT concrete panels are fixed with visible and invisible anchors and also with glue. Additional surface impregnation guarantees durability. Minimalist style of architectural concrete is a way into the future of bold architecture, including small ones.

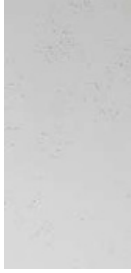




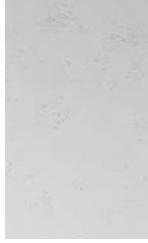
Architectural concrete panel is a simple form that gives interiors a modern character. Original pattern and modern design allows for universal use on different surfaces. Perfect base to create modern arrangements. VHC Concrete are a combination of the highest quality and aesthetics of perfect workmanship. Concrete is made of natural raw materials only. Highly advanced production technology and strict quality control guarantee uniform color and high product quality.



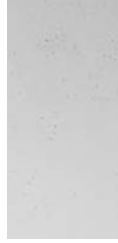
1200 x 600 mm



1000 x 500 mm



900 x 550 mm



900 x 450 mm



- *TERRACE PLATE* 800 x 800 mm



600 x 600 mm



600 x 300 mm





GUARANTEE OF QUALITY
 APPLYING COMPANY
 CHEMISTRY

NATURAL DARK

S95

GREY

S51

DARK GREY

S96

ANTHRACITE

B8

BLACK

B15



1200 x 600 mm



600 x 600 mm





- TERRACE PLATE



800 x 800 mm



1200 x 600 mm

The concrete shapes are so rich that every customer will find an exciting inspiration. Our product range includes panels with classic 2D structures and sophisticated, abstract and mesmerizing 3D panels. Our years of experience and great creativity allow us to offer unique spatial patterns that will change every arrangement. We are sure that 3D architectural concrete panels will meet the expectations of even the most demanding customers and present any interior design with a distinctive and impressive look. When betting on this natural, high-quality finishing material, it is possible to obtain an impressive visual effect.



3D COLLECTION



WPB 01



WPB 02



WPB 03



WPB 04



WPB 05



WPB 11



WPB 12



WPB 13



WPB 14 *



WPB 15



WPB 21



WPB 22



WPB 23



WPB 24



WPB 25



WPB 31



WPB 32



WPB 33



urbicco
design

* - pattern for special order

WHITE

BS

SILVER

B0

LIGHT GREY

B1

BEIGE

KS

NATURAL

S50

WPB 06



WPB 07



WPB 08



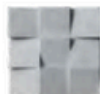
WPB 09



WPB 10



WPB 16



WPB 17



WPB 18



WPB 19



WPB 20



WPB 26



WPB 27



WPB 28



WPB 29 *



WPB 30



GUARANTEE OF QUALITY
 APPLYING COMPANY
 CHEMISTRY

NATURAL DARK

S95

GREY

S51

DARK GREY

S96

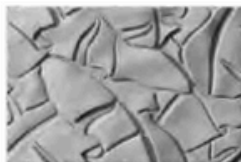
ANTHRACITE

B8

BLACK

B15

WPB 34



WPB 35



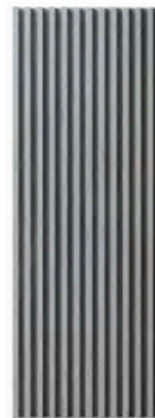
WPB 36



WPB 37



WPB 38



WPB 39



WPB 40



WPB 41



WPB 42



WPB 43



WPB 44



WPB 45



WPB 46



WPB 47



WPB 48



WPB 49



WPB 50



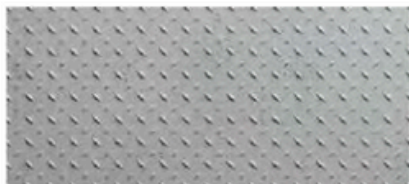
WPB 51



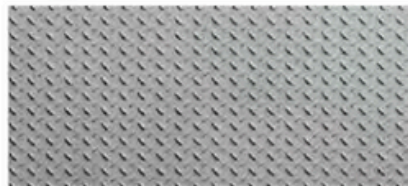
WPB 52



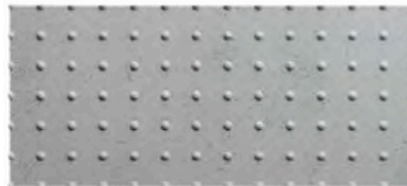
WPB 53



WPB 54



WPB 55



16

WPB
01

0,48 m²

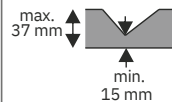


975 x 650 x 35 mm

0,06 m²



260 x 300 x 37 mm

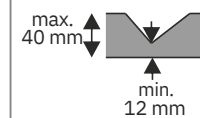


WPB
02

0,07 m²



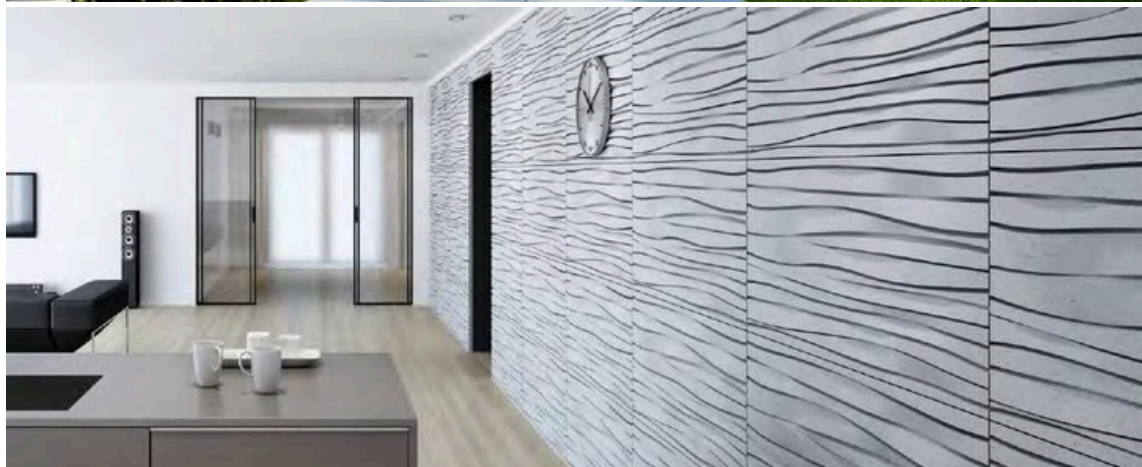
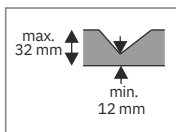
448 x 200 x 40 mm



WPB
03



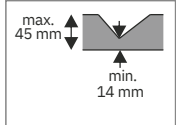
1000 x 500 x 32 mm



WPB
04



1200 x 600 x 40 mm

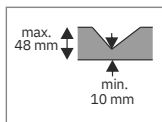


20

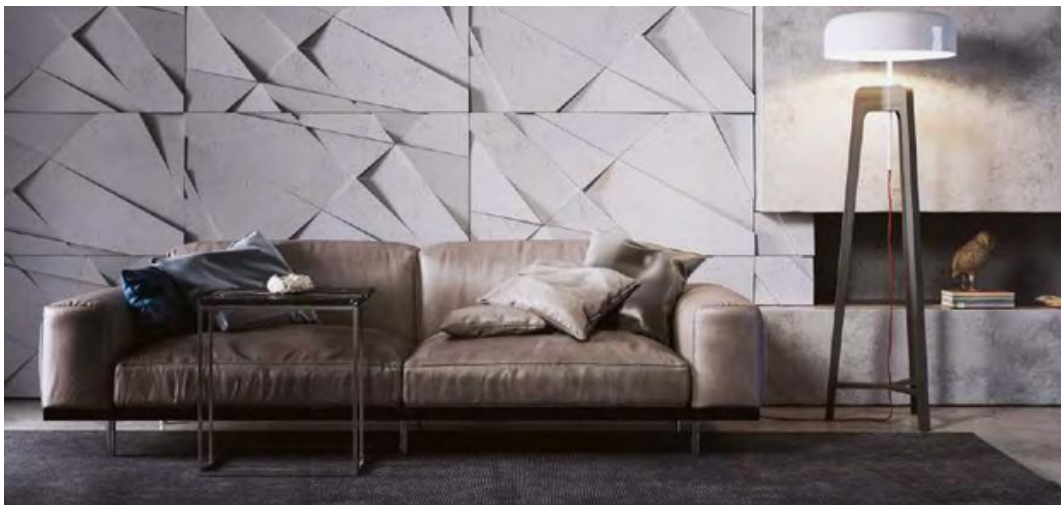
WPB
05

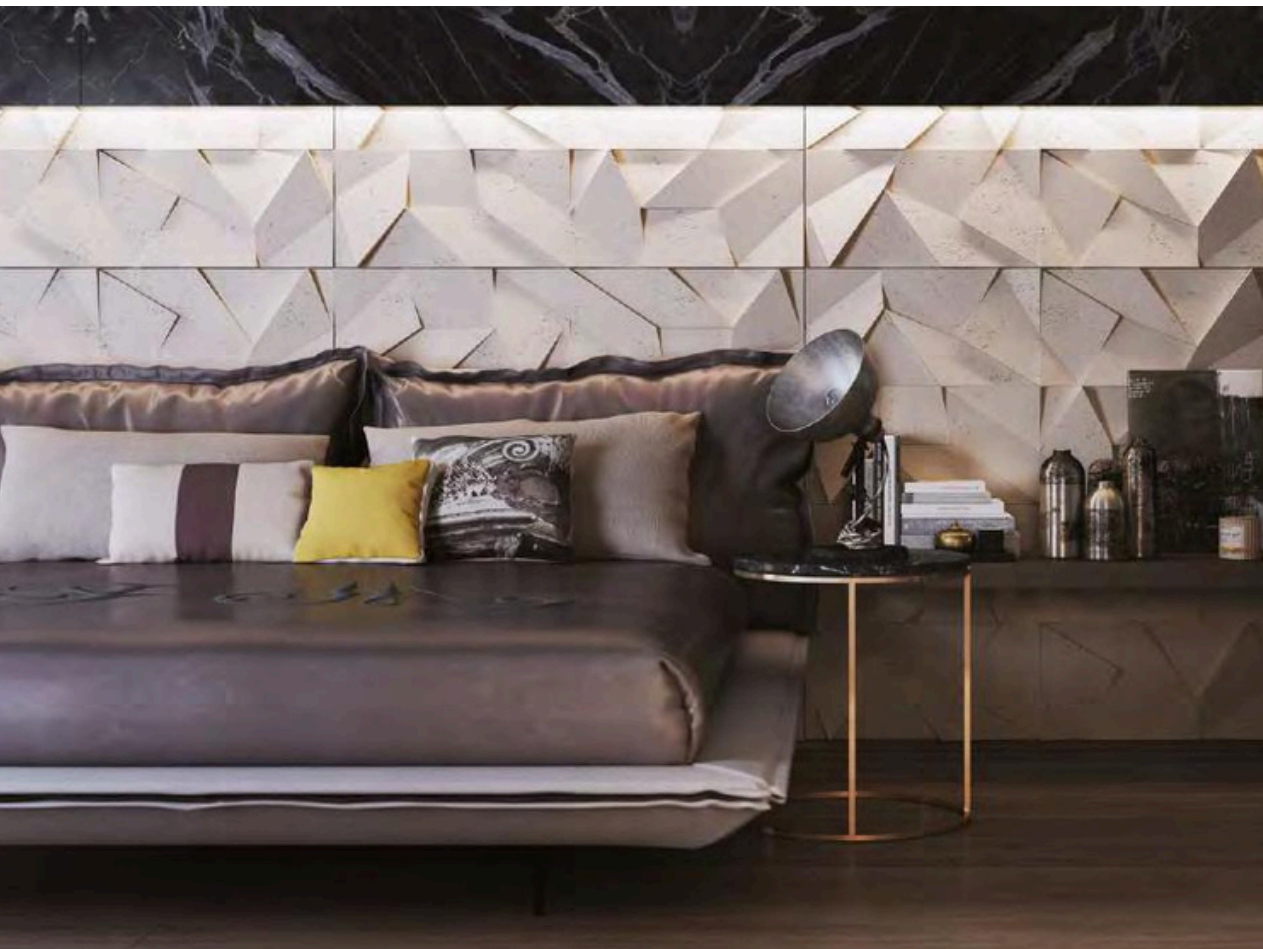


1200 x 600 x 48 mm



urbicco
design

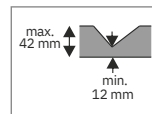




WPB
06



600 x 600 x 38 mm

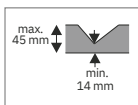


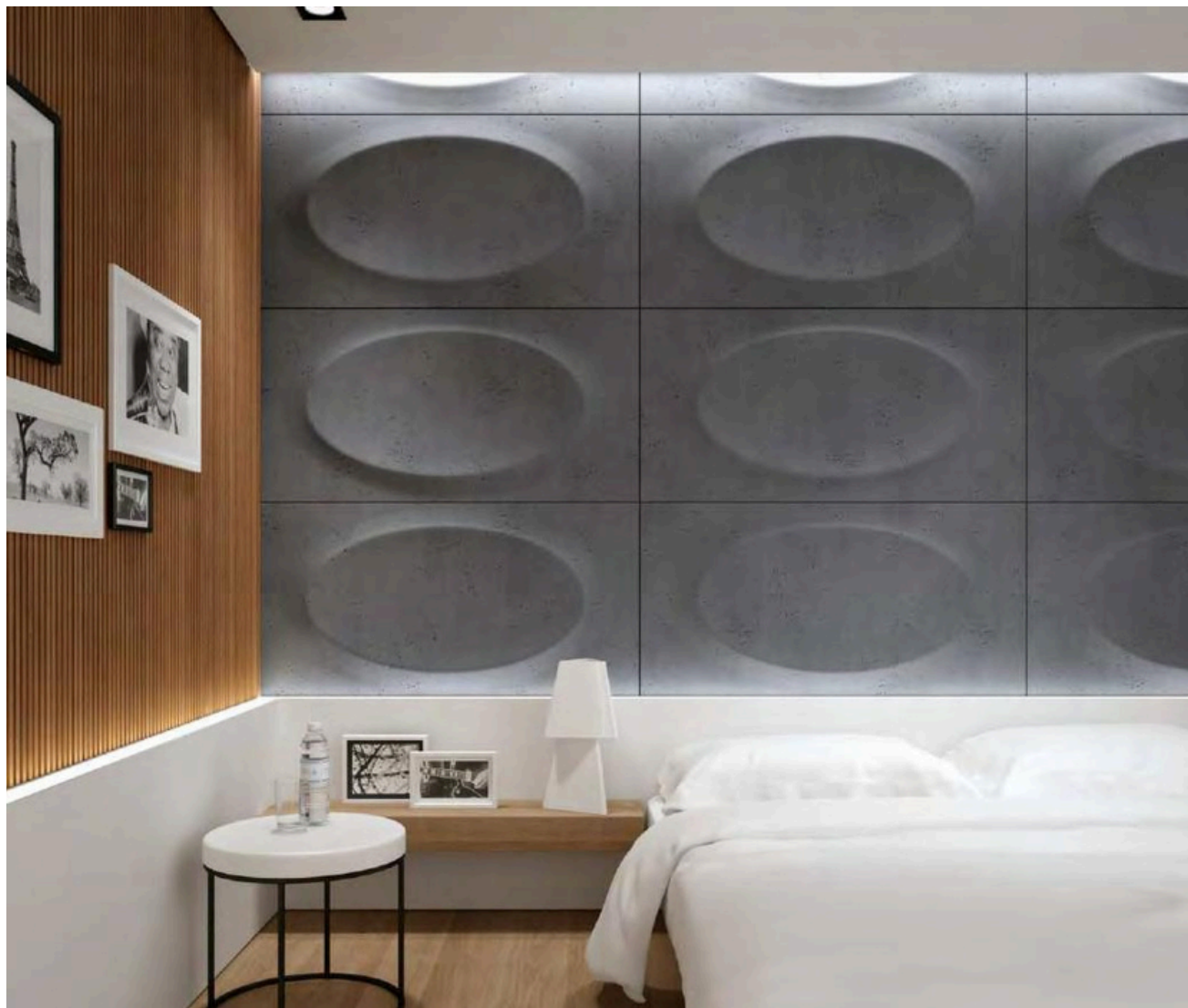
urbicco
design

WPB
07



1200 x 600 x 45 mm ^A

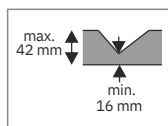




23
PB
08



1200 x 600 x 40 mm



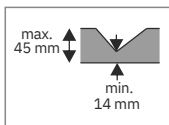
urbicco
design

WPB

09

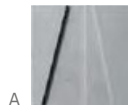


1200 x 600 x 40 mm

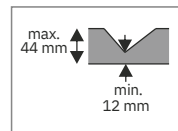




WPB
10



600 x 600 x 40 mm

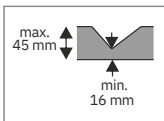


urbicco
design

WPB
11

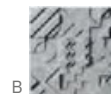


1200 x 600 x 40 mm

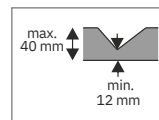




WPB
12



600 x 600 x 40 mm

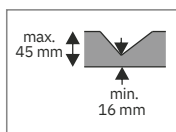


urbicco
design

WPB
13



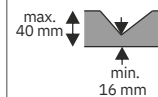
1200 x 600 x 40 mm



WPB
15



600 x 600 x 40 mm



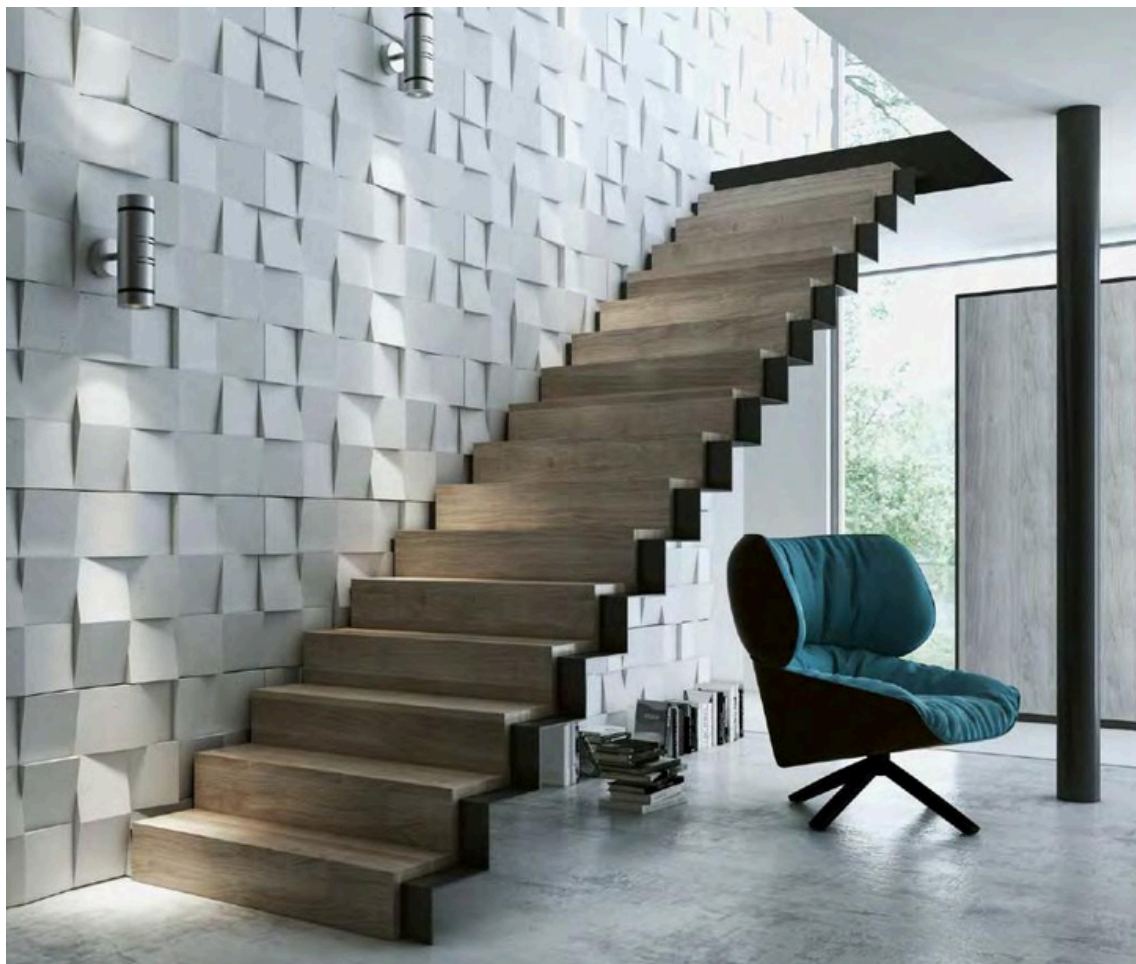
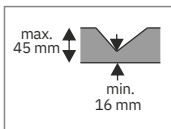
urbicco
design

30

WPB
16



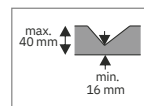
600 x 600 x 45 mm



WPB
17



1200 x 600 x 30 mm



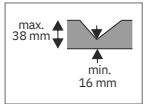
urbicca
design

32

WPB
18



1200 x 600 x 30 mm



urbicco
design

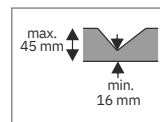




WPB
19



1200 x 600 x 45 mm



urbicco
design

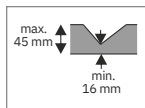
34

WPB
21

0,45 m²



1050 x 600 x 45 mm



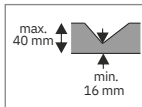
urbico
design



WPB
22



600 x 600 x 40 mm

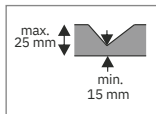


urbicco
design

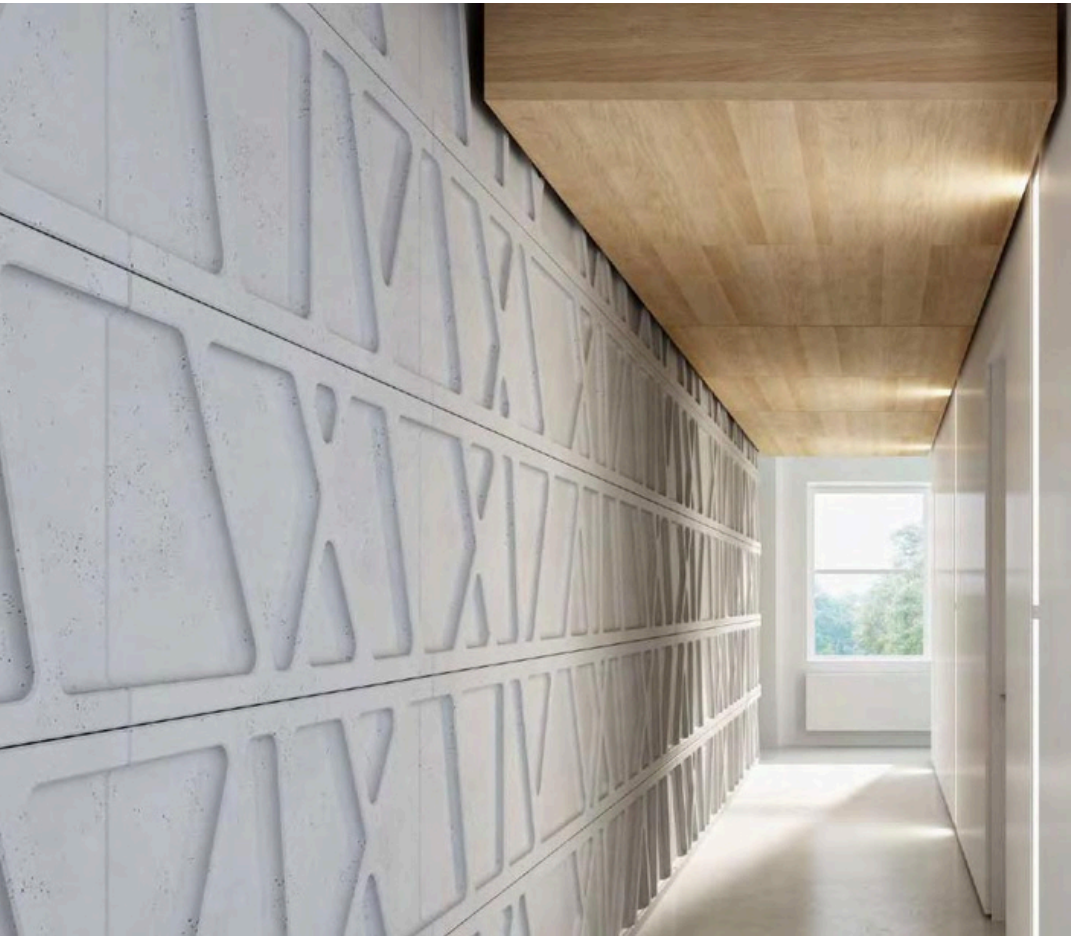
WPB
23



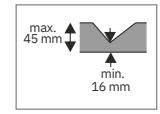
1200 x 600 x 25 mm



WPB
24



1200 x 600 x 45 mm



urbicco
design

38

WPB
25

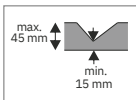


A

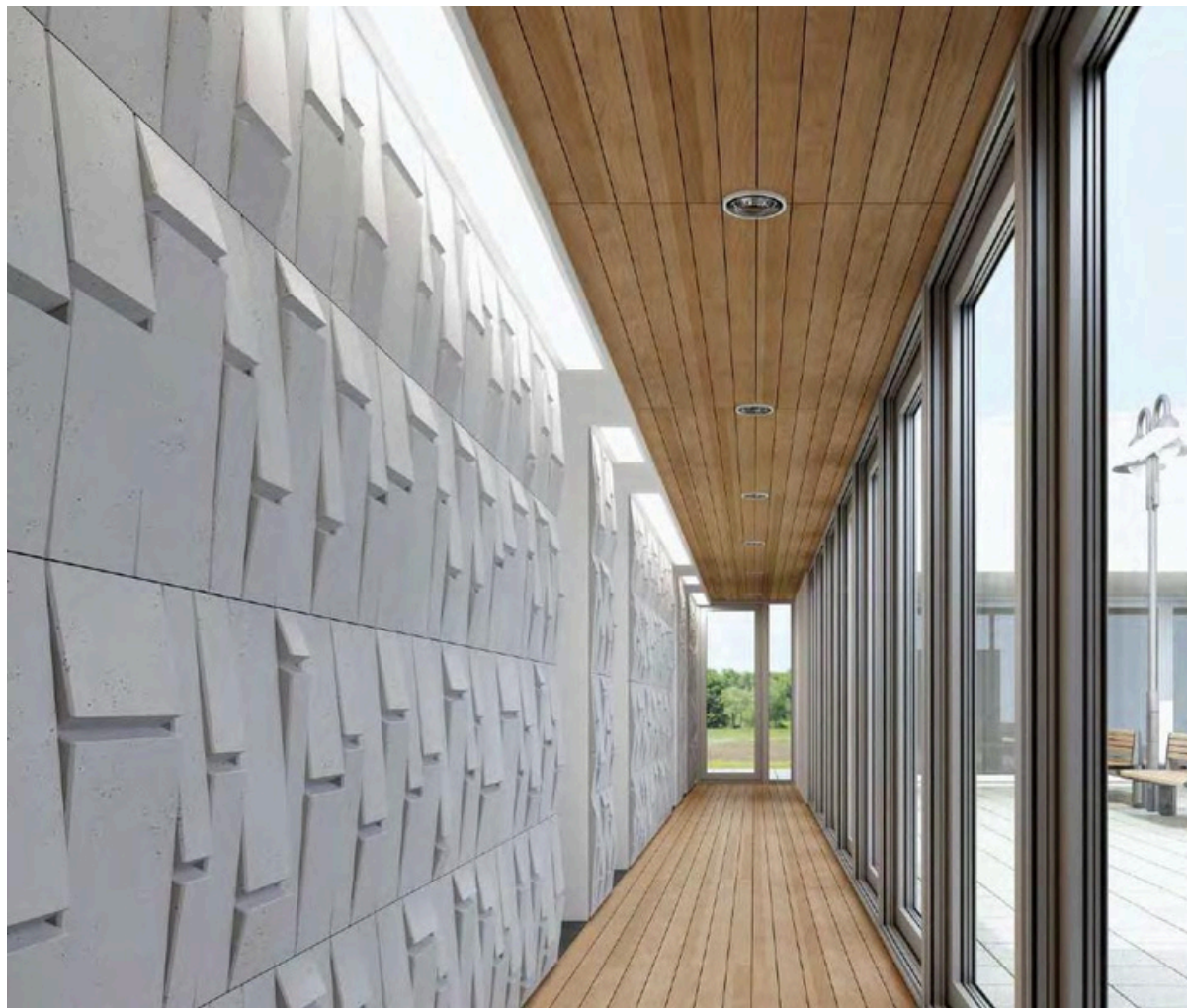


B

600 x 600 x 45 mm



urbicca
design

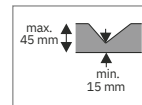




WPB
26



600 x 600 x 45 mm

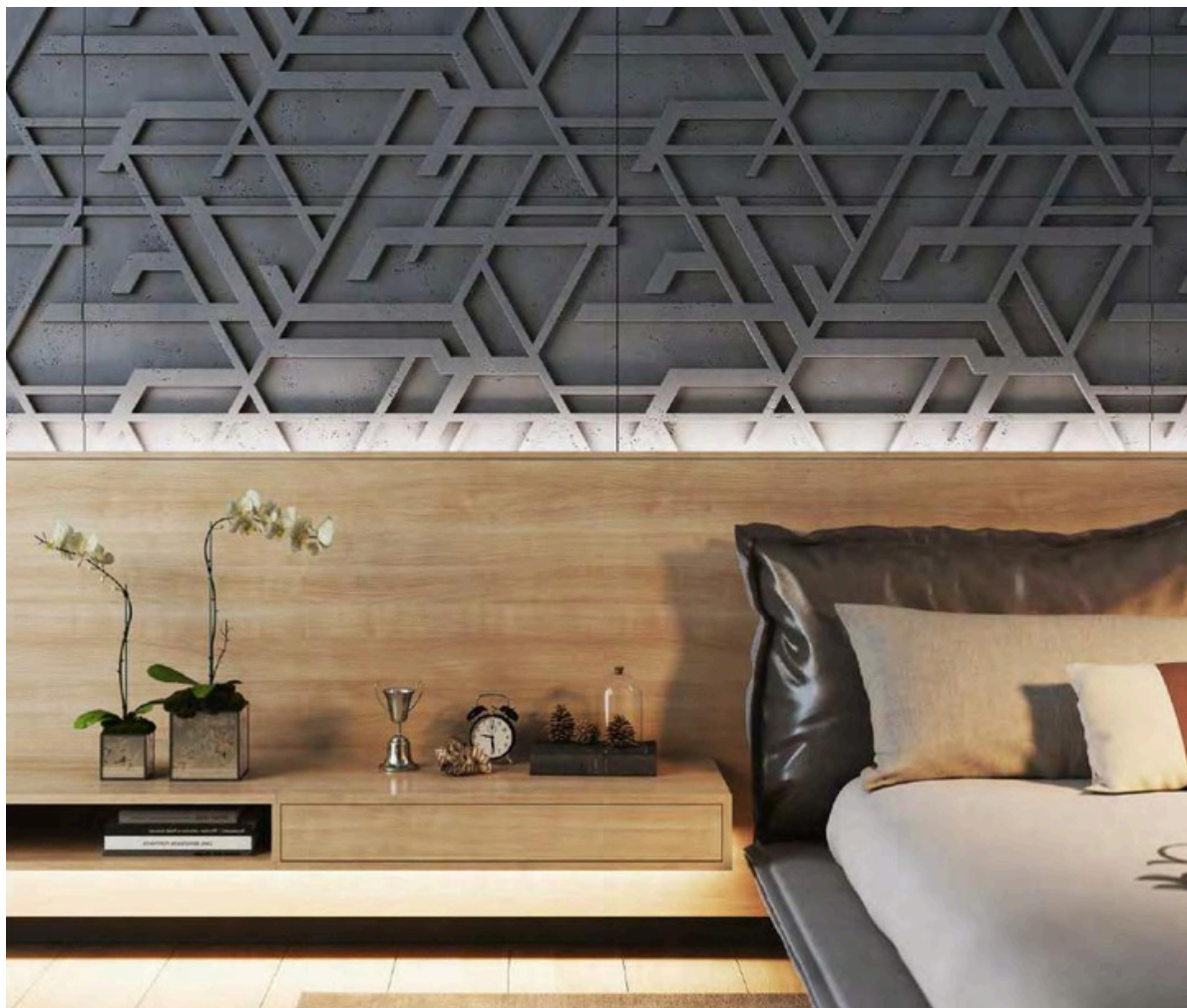
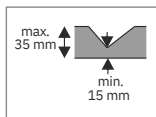


urbicco
design

WPB
27



1200 x 600 x 35 mm

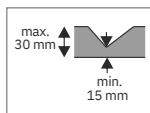




WPB
28



1200 x 600 x 30 mm

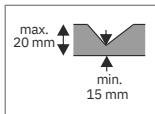


42

WPB
30



1200 x 600 x 20 mm



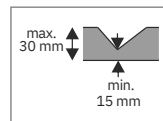
urbicco
design



WPB
31



1200 x 600 x 30 mm

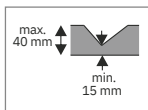


44

WPB
32



1200 x 600 x 40 mm



urbicco
design



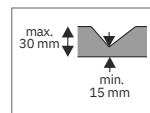
WPB
33



1200 x 600 x 30 mm



600 x 600 x 30 mm



urbicco
design

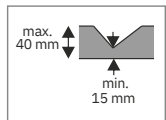


46

WPB
34



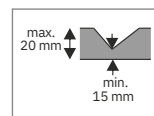
720 x 480 x 40 mm



WPB
35



395 x 117 x 20 mm



48

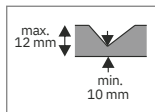
WPB

36

0,81 m²



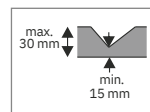
1350 x 600 x 12 mm



WPB
37



600 x 600 x 30 mm



50

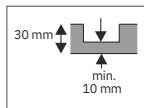
WPB

38

0,65 m²



1350 x 478 x 30 mm



urbicco
design



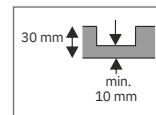


WPB
39

0,66 m²



1350 x 489 x 30 mm

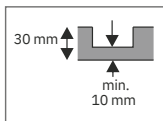


urbicco
design

PBW
40

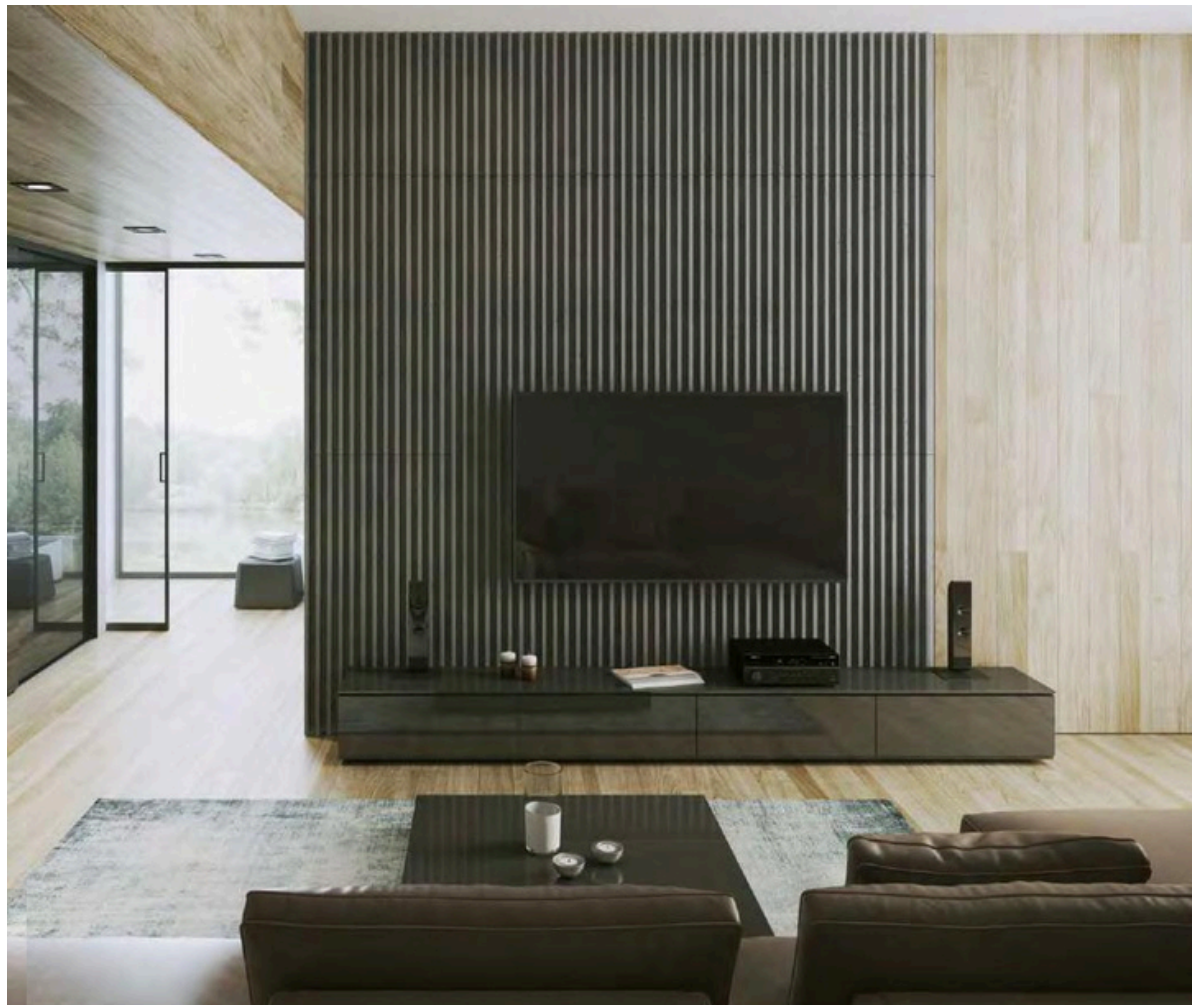
0,65 m²

1350 x 478 x 30 mm



urbicco
design



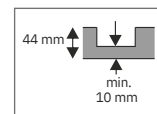


WPB
41

0,51 m²



1350 x 380 x 30 mm



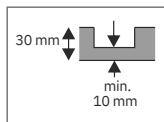
urbicco
design

PBW
42

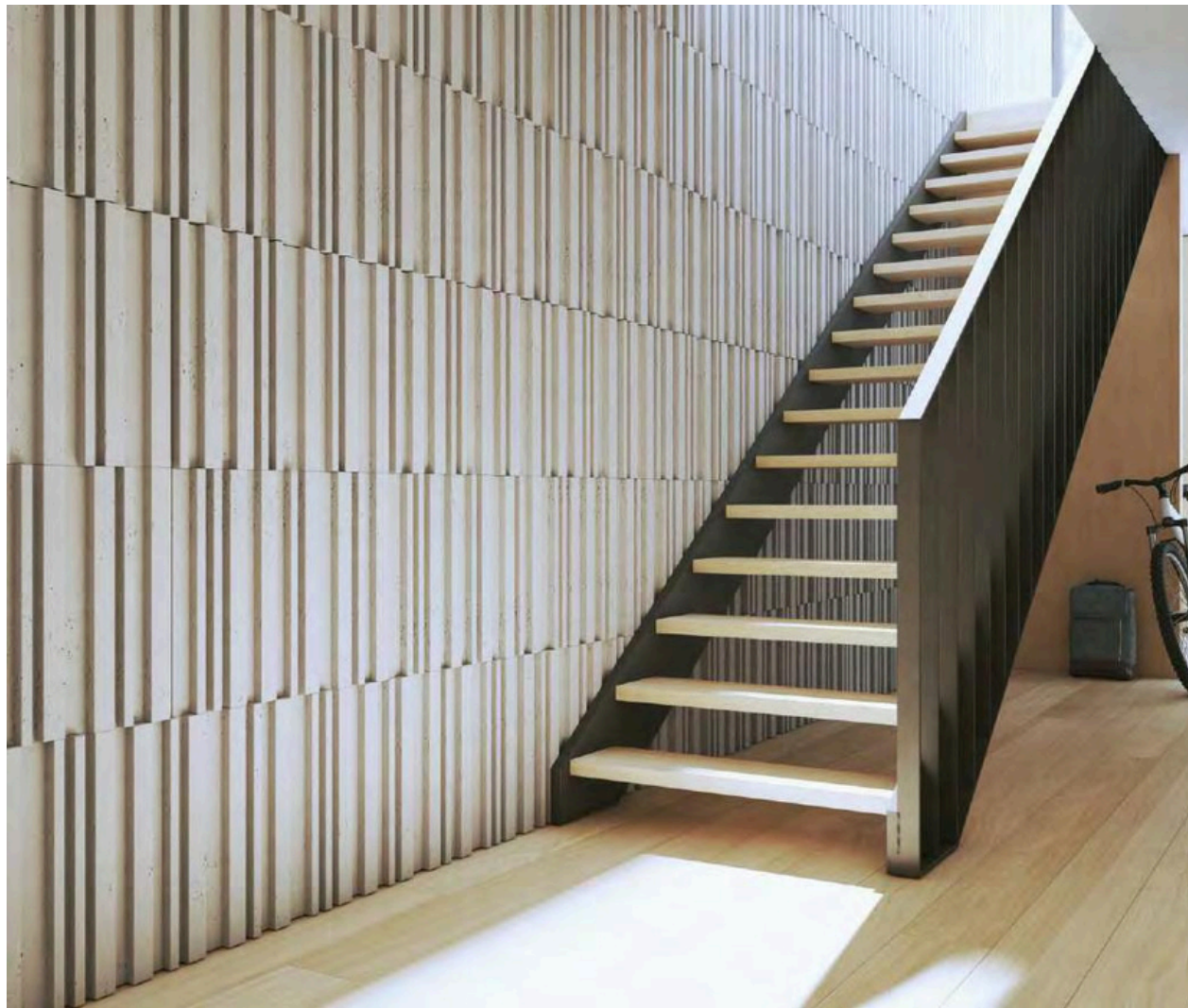
0,65 m²



1350 x 478 x 30 mm

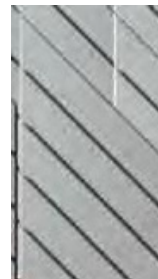


urbicco
design

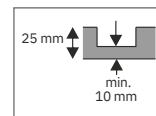


PBW
4.3

0,35 m2



121 x 501 x 25 mm



urbicco
design



56

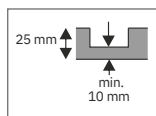
PBW

44

0,53 m²



1188 x 600 x 25 mm



urbicco
design

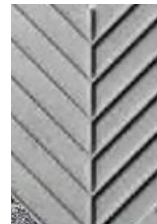




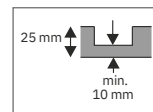
57

PBW
45

0,53 m2



1188 x 600 x 25 mm



urbicco
design

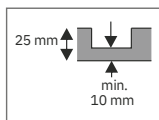
58

PBW
46

0,47 m²



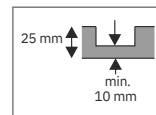
939 x 600 x 25 mm



WPB
47

0,53 m²

1188 x 600 x 25 mm



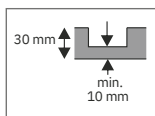
60

WPB
48

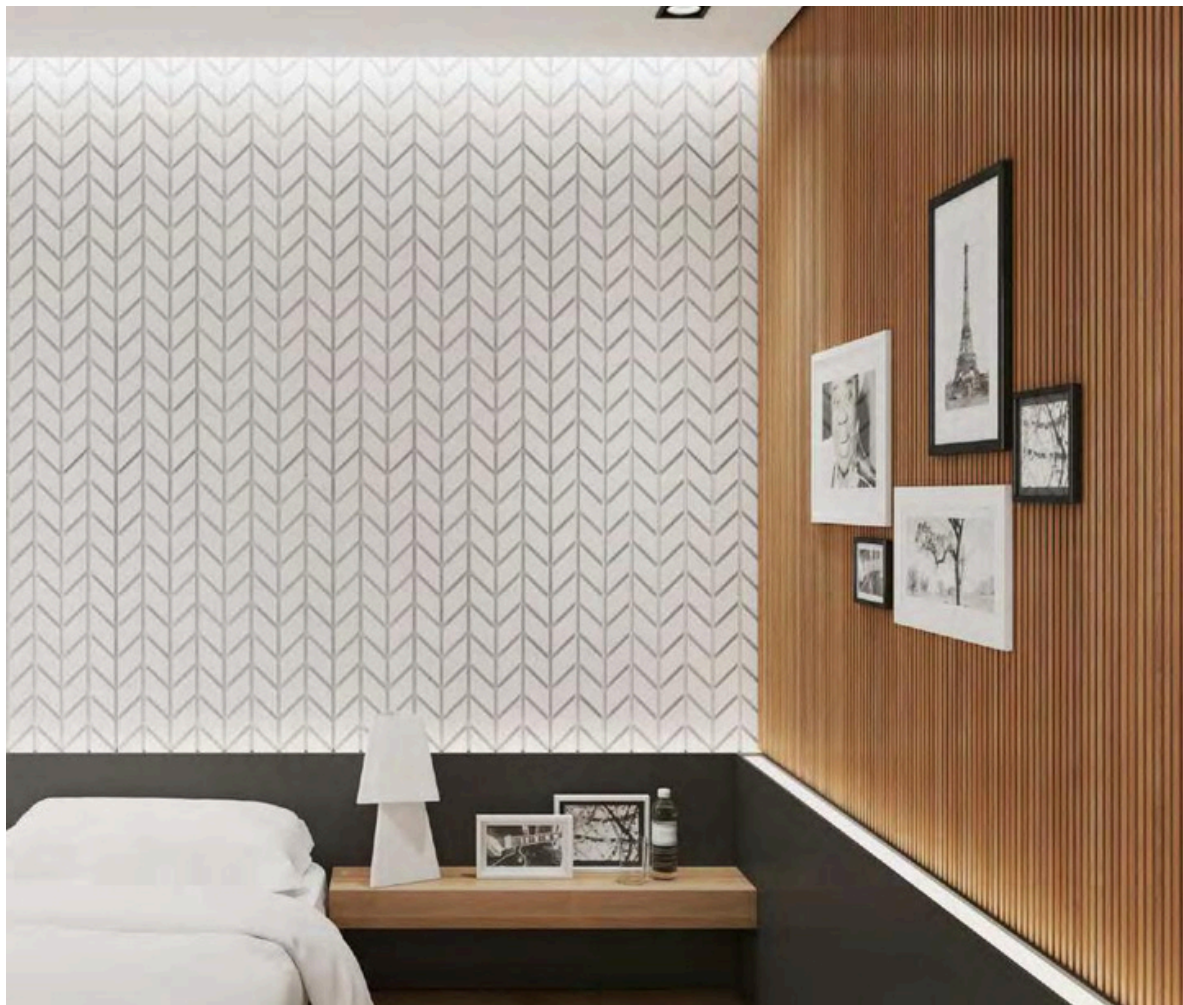
0,51 m²



1188 x 935 x 25 mm

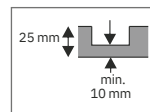


urbicco
design



**WPB
49**0,51 m²

1188 x 935 x 25 mm

**urbicco**
design

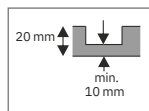
62

PBW
50

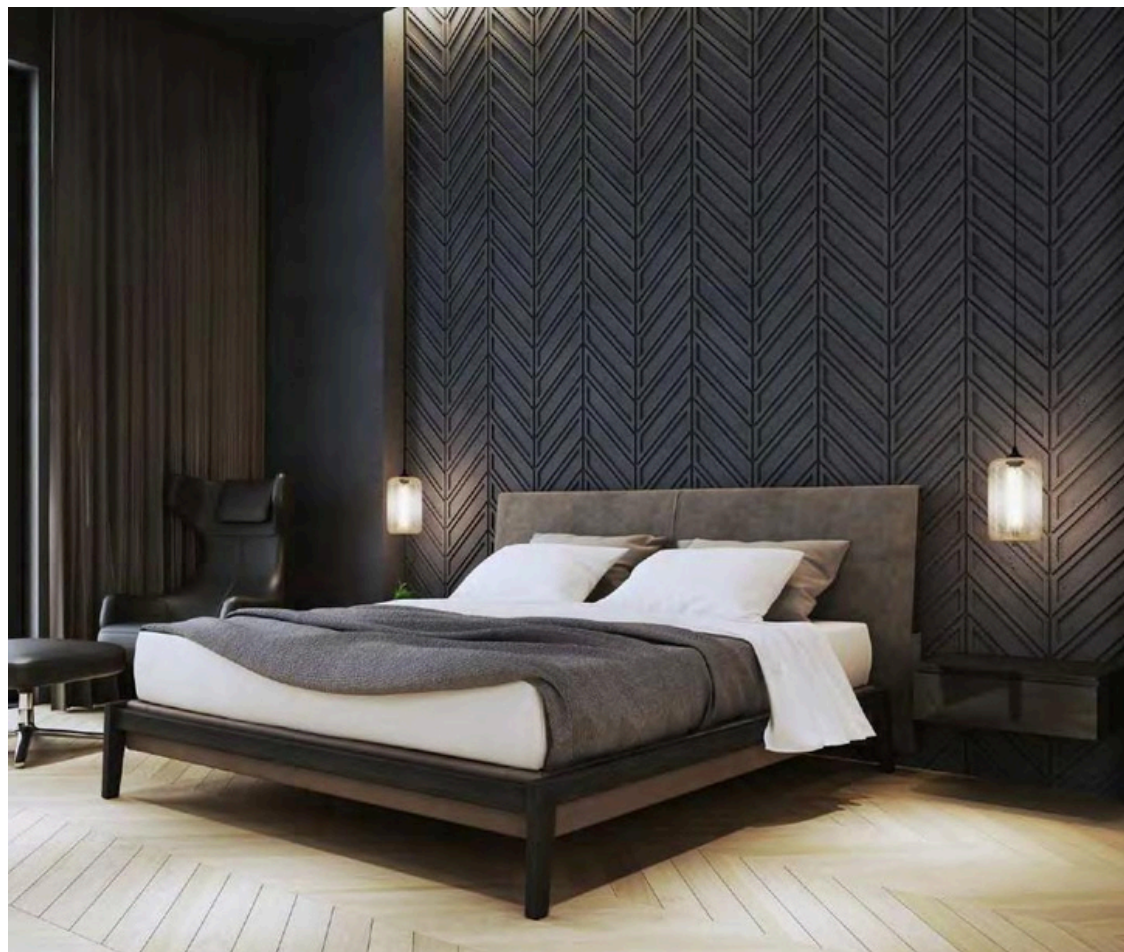
0,53 m²



1156 x 600 x 20 mm



urbicco
design

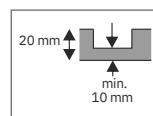


WPB
51

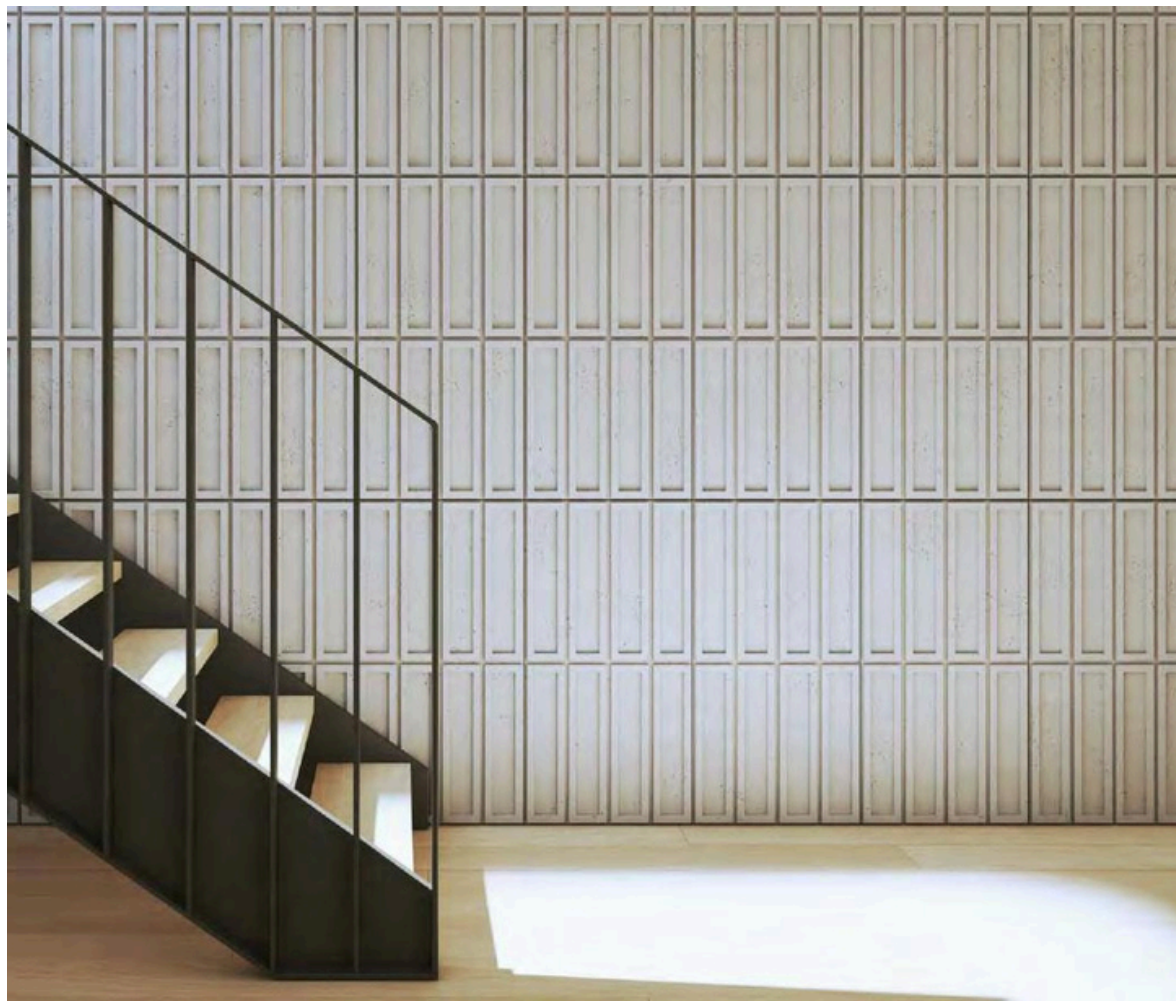
0,33 m2



800 x 414 x 20 mm



urbicco
design

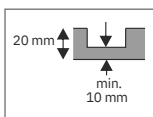


WPB
52

0,33 m2

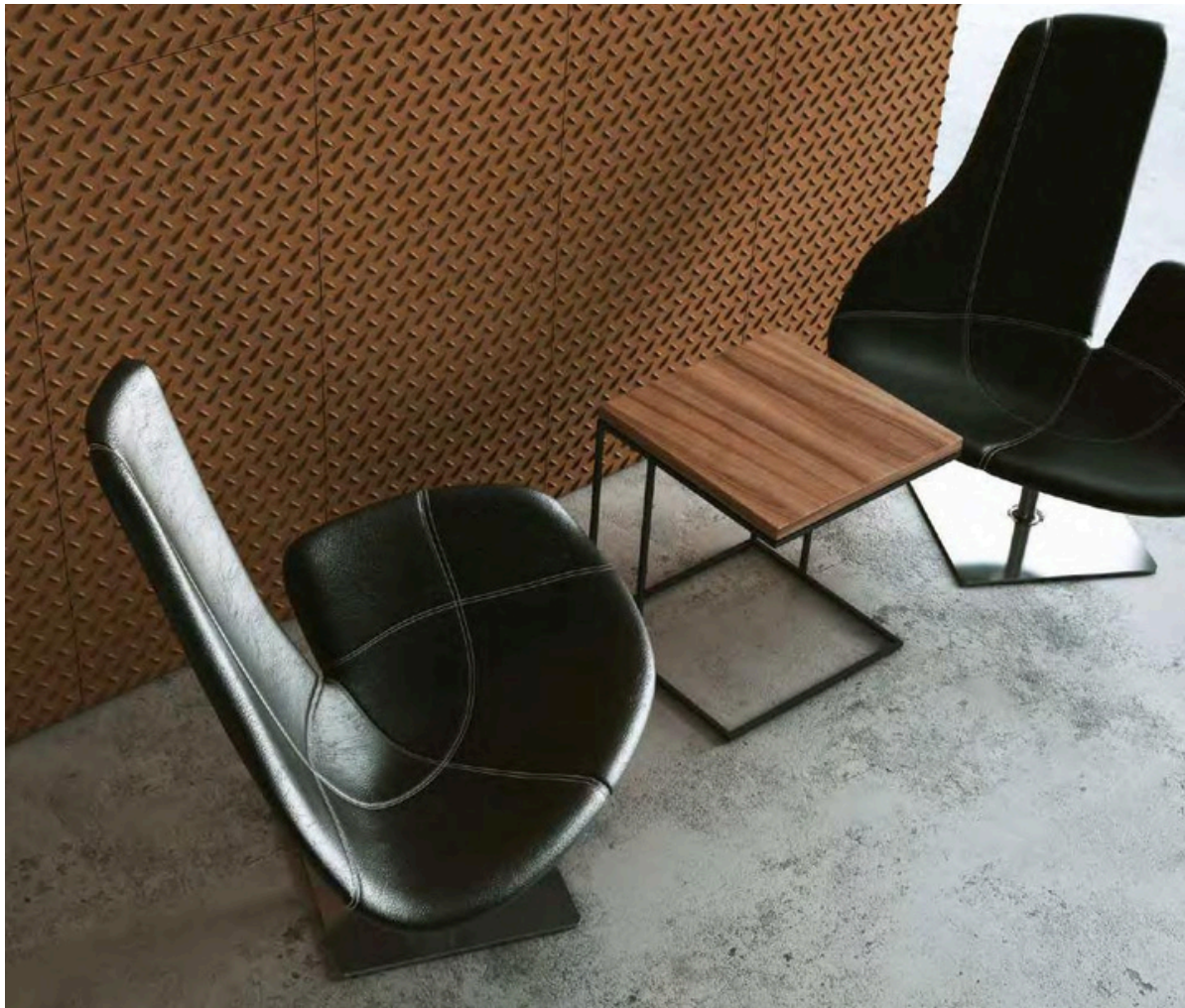


1053 x 414 x 20 mm



urbicco
design



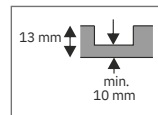


WPB
53

0,81 m²



1350 x 598 x 13 mm



urbicco
design

66

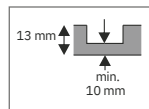
WPB

54

0,81 m²



1350 x 598 x 13 mm



urbicco
design

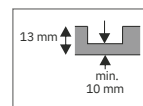


WPB
55

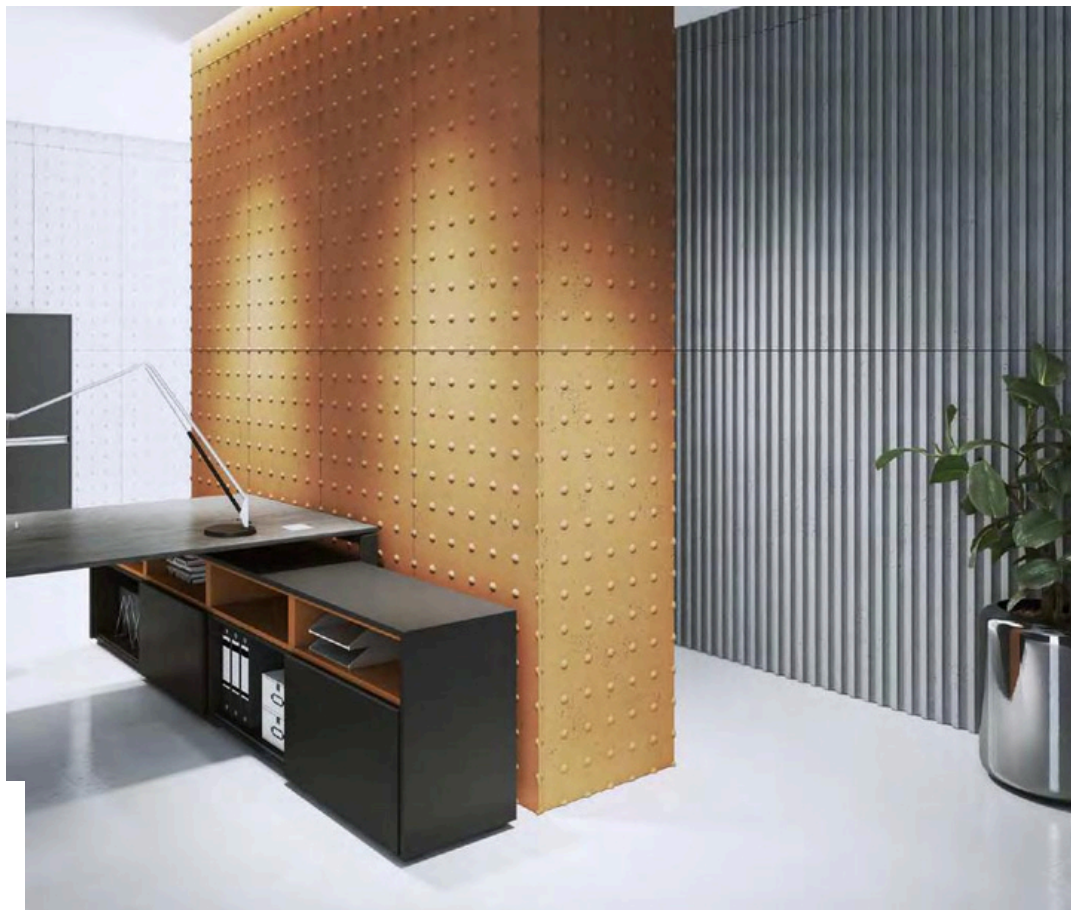
0,81 m²



1350 x 598 x 13 mm

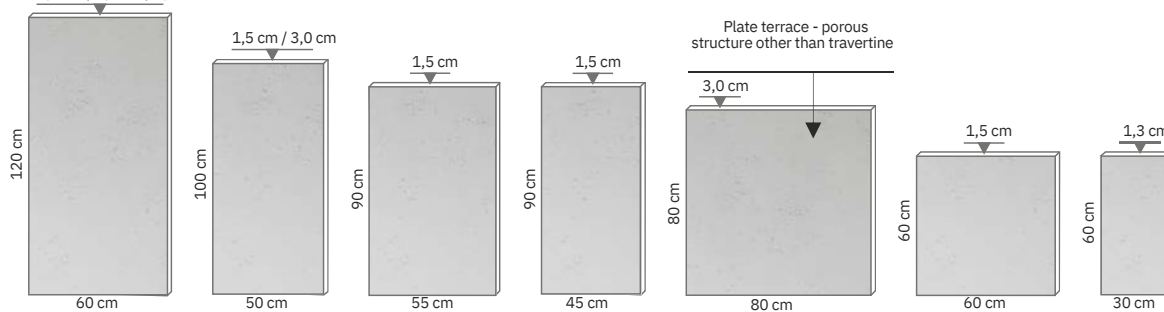


urbicco
design



TYPE OF PANEL		TECHNICAL DATA			
FORMAT (cm)		PACKAGE	NUMBER OF PIECES ON A PALLET	WEIGHT (1 piece)	MONTAGE
length / width / thickness	SZT / M2	SZT / M2	SZT / M2	KG	-
60 x 30 x 1	5,55	5 / 0,9 1	240 / 43,2	3,3	GLUE BOLTS
60 x 60 x 2	2,77	/ 0,36 1 /	64 / 23,04	13	GLUE-BOLTS
60 x 60 1,5	2,77	0,36 1 /	64 / 23,04	11	GLUE-BOLTS
90 x 45 x 1,5	2,5	0,405 1 /	25 / 10,125	10	GLUE-BOLTS
90 x 55 x 1,5	2,02	0,495	25 / 12,375	11,5	GLUE-BOLTS
100 x 50 x 1,5	2	1 / 0,5	32 / 17,5	15,2	GLUE-BOLTS
100 x 50 x 2	2	1 / 0,5	32 / 17,5	15,2	GLUE-BOLTS
120 x 60 x 1,5	1,4	1 / 0,72	25 / 18	22	GLUE-BOLTS
120 x 60 x 2	1,4	1 / 0,72	30 / 21,6	26	GLUE-BOLTS
120 x 60 x 3	1,4	1 / 0,72	26 / 18,72	33	GLUE-BOLTS
80 x 80 x 3	1,56	1 / 0,64	22 / 14,08	42	STABLE AREA

MEASUREMENTS :
 1,5 cm / 2,0 cm / 3,0 cm



DECLARED PROPERTIES		
ESSENTIAL CHARACTERISTICS	PROPERTIES	HARMONISED TECHNICAL SPECIFICATION
Concrete cladding	Strength class 30/37	PN-EN 14992+A1:2012 PN-EN 13369:2013-09
Tensile strength in bending	≥ 2,0 (Mpa)	
Density class	1,8	
Dimension tolerance	Class A (±3 mm)	
Reaction to fire	Euroclass A1	
Water vapour permeability	μ = 5/15	
Dimensional stability under the influence of moisture and drying. Shrinkage due to drying out (inside/outside)	0,60/0,34 (mm/m)	
Insulation from direct airborne sound	Gross density ≤ 1800 kg/m ³	
Resistance to freezing and thawing with de-icing agents	< 0,6 kg/m ²	
Wear resistance class	4	
Application	outdoor / indoor	

All work must be carried out in accordance with the rules of the art. The above description has been drawn up based on the knowledge and experience of the manufacturer. At the construction site, always check individual conditions for installation.



MOUNTING SYSTEM OF CONCRETE PANELS (standard version)

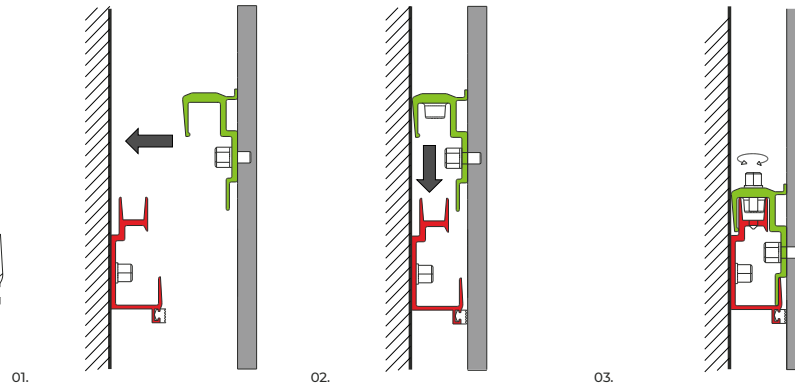
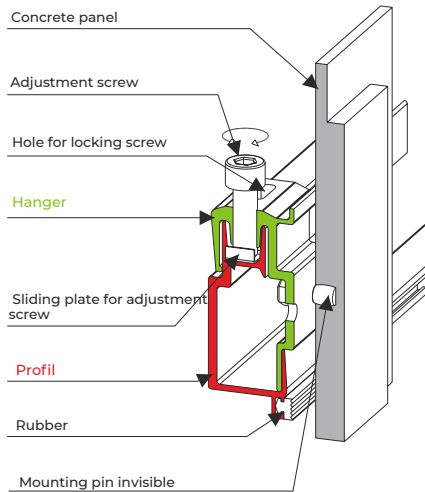
- internal and external application:
without substructure

Rubber

Use of rubber between the sheet and the mounting profile eliminates noise which may arise in the case of vibrations caused by wind. VHCT offers such a solution as the only supplier of this type of construction. Rubber can also be used for slight adjustment of the plane of deformed sheet by placing it in places where the sheet touches the horizontal profile.

Sliding plate for adjustment screw

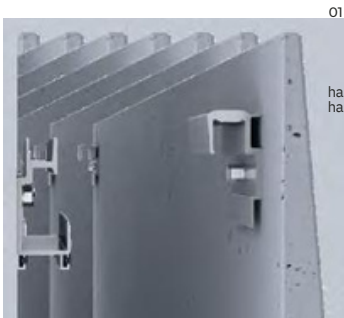
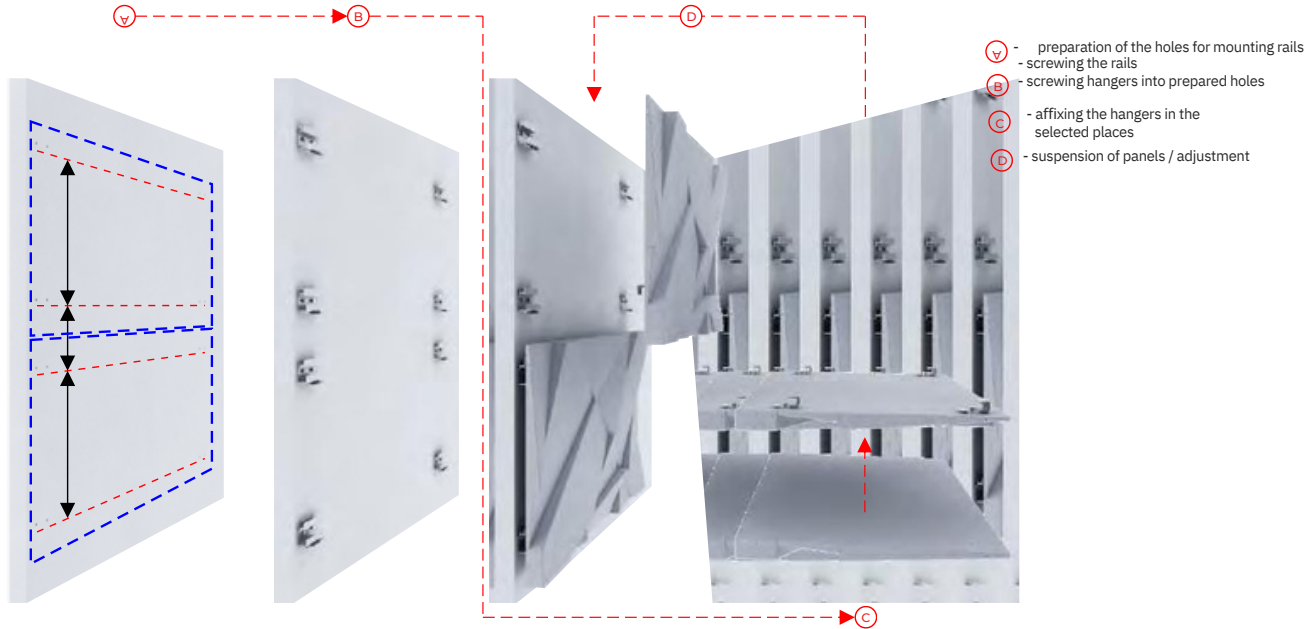
The use of a rustless pad under the adjustment screw protects the aluminium profile against drilling a hole. The adjustment screw can move along the axis of the profile. Profile features protection as the only supplier of such structures.



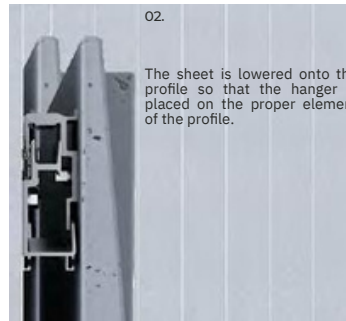
01. The cladding panel with attached hangers is attached so that the hanger was above the profile.

02. The sheet is lowered onto the profile so that the hanger is placed on the proper element of the profile.

03. After proper suspension of the cladding panel on the profile, it is screwed with an elevation screw and the adjustment of the level and height is made.



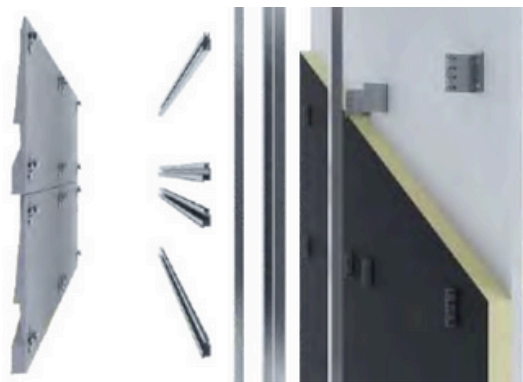
The cladding panel with attached hangers is attached so that the hanger was above the profile.



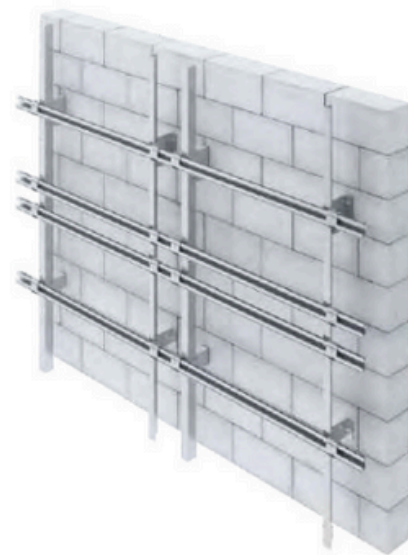
The sheet is lowered onto the profile so that the hanger is placed on the proper element of the profile.



After proper suspension of the cladding panel on the profile, it is screwed with an elevation screw and the adjustment of the level and height is made.



**MOUNTING SYSTEM
OF CONCRETE PANELS**
- internal and external application:



Profile mounting invisible - levels

L-profile facade 60x45

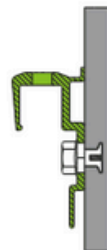
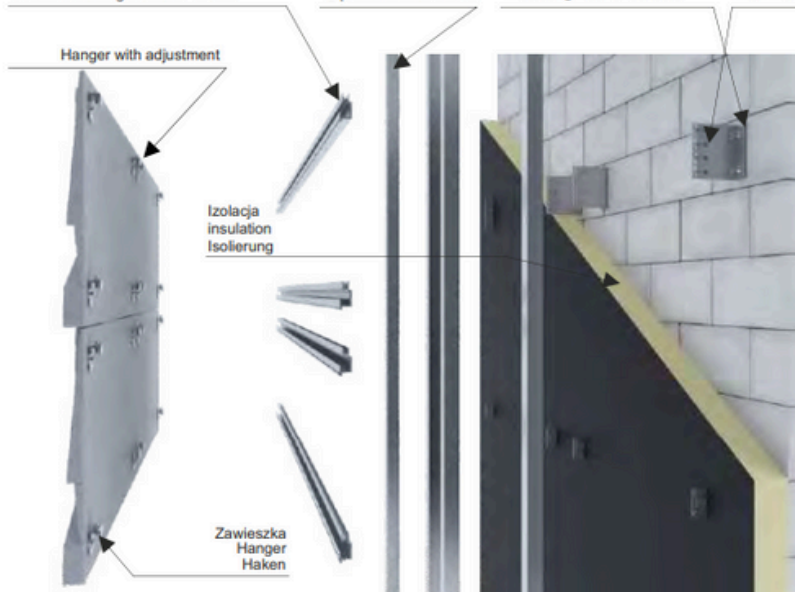
Insulating washer console

Aluminum console

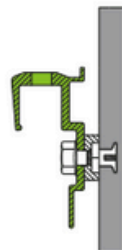
Hanger with adjustment

Izolacja
insulation
Isolierung

Zawieszka
Hanger
Haken



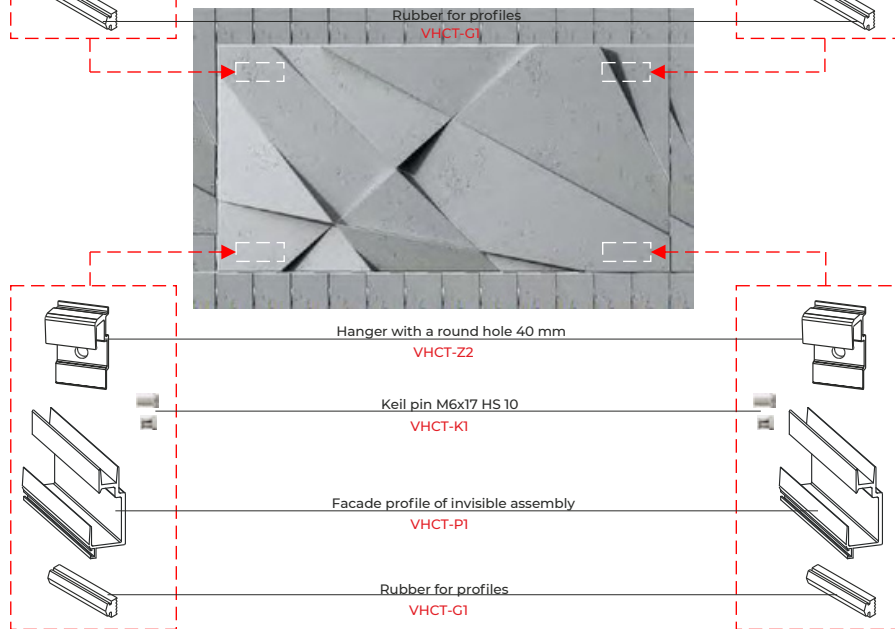
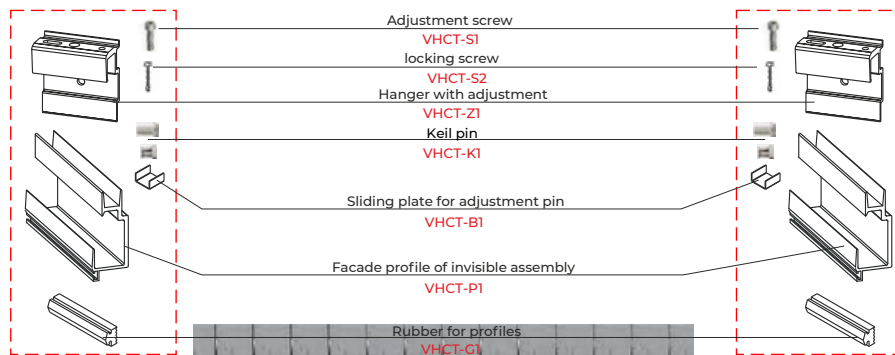
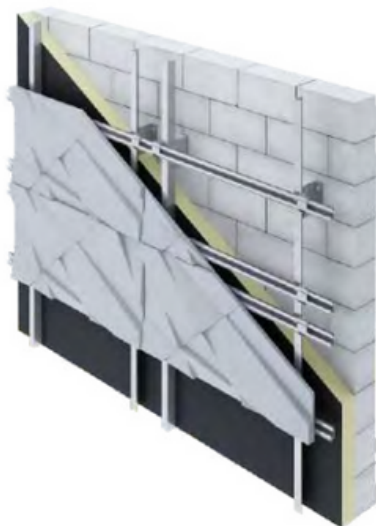
Keil pin:
- direct installation
without a spacer



Keil pin:
- direct installation
with a spacer



SFS pin:
- direct installation
without a spacer



CONCRETE CONNECT



VHCT HYDROPHOBIC IMPREGNATE



CEMENT ADHESIVE
VHCT-SILVER TYPE C2TE



PERFECT GRUNT VHCT
PROFESSIONAL DEEPLY PENETRATING
PRIMER



WHITE

BS

SILVER

B0

LIGHT GREY

B1

BEIGE

KS

NATURAL

S50



GUARANTEE OF QUALITY
APPLICATING COMPANY
CHEMISTRY

NATURAL DARK

S95

GREY

S51

DARK GREY

S96

ANTHRACITE

B8

BLACK

B15



VHCT Quality Certificate

ENGLISH □ IMPORTANT

△ VHCT concrete panels are not DIY products and need to be stored, unpacked, handled and installed **ONLY** by experienced professionals. △ Make sure to provide adequate support for the panels after removing the safety tape. Use extreme caution to avoid the risk of accidents or damaging the panels. △ Before installation, the panels need to acclimatise to the room conditions for at least 48 hours. Allow uniform air access to both sides of each individual panel. We recommend using polystyrene spacers. △ When using water-based adhesives for installation, both the VHCT panels and the designated wall/surface should always be primed before installation. Water-based glue application without the use of any primer may bend already installed concrete panels and cause discoloration. △ Exposure of the panels to humidity and weather conditions may damage their structure and cause alterations. (e.g. bending, swelling, breaking, discoloration, etc.). Please carefully follow the storage, maintenance and installation instructions provided.

PRODUCT DESCRIPTION:

VHCT architectural concrete is intended for decoration of interior walls and facades in accordance with the applicable application harmonized technical specification. Made by the casting method, it has the following properties: diverse structure, shades characteristic of natural stone, delicate point discoloration, aesthetic and decorative finish with deviations of up to ± 3 mm. The VHCT concrete used for the production of concrete panels is of high quality, it has product type tests, it is a subject to factory and external quality control.

BEFORE INSTALLATION

In order to maintain the natural appearance of the wall, it is recommended to take the boards from different places on the pallet. At this stage, it is necessary to re-check the colours of all panels. 3. The dimensions of the boards may slightly vary in length and width, within the declared tolerance.

4. The cement-lime wall should be well cleaned of dust and paint. Clean the boards from dust from the gluing side. 5. Make sure that the wall is load-bearing and properly primed. Apply primer to the wall with a brush until it is completely saturated. Absorbency should be checked one hour after the last application of the primer and repeat until successful, depending on the absorbency of the wall. PERFECT GRUNT should be used for priming VHCT. After priming, wait 8-24 hours for the primer to dry, and before gluing panels. 6. The panels should be placed in front of the wall in order to place them on the wall according to the pattern and shade. Before installation, check the color and type of panels again. 7. The panels should be impregnated (if additionally required) in a horizontal position using VHCT PERFECT IMPREGNAT. Excess impregnation, which concrete does not absorb, should be removed immediately, e.g. with a sponge roller. 8. Impregnation should be performed first on two or three panels and after approx. 2 hours if the boards are dry as a whole (no traces of wet impregnation), continue impregnation on subsequent boards.

STORAGE

Concrete panels should be stored in a vertical position, leaning against the wall with the long edge of the board, in a dry position and a ventilated room. Store without wrapping foil. Do not store the concrete panels outdoors. The method of packing prevents air access to the boards, which may or may not affect the colors discolor the boards if panels are not properly unpacked and stored.

INSTALLATION

For gluing concrete slabs use: - VHCT CONCRETE CONNECT - for most types of substrate: glass, sanitary ceramics, porcelain, painted, enameled, glazed surfaces, plaster, building ceramics, clinker, concrete (including: wet concrete), epoxy substrates, polyester, polyurethane, HPL, styrodur, PVC and plastics of a similar type, metals and their alloys (copper, lead, zinc, aluminum, etc.), steel (galvanized, stainless, enameled), impregnated wood, cork, MDF, OSB, chipboard and other wood-based materials. For connections with highly porous or absorbent substrates, it is recommended to use VHCT PRIMER. In case of doubt, carry out an adhesion test. We recommend using glues: - VHCT SILVER - for cement, concrete and ceramic substrates - has accelerated setting and reduced drying time, for discoloration-sensitive materials. - VHCT ELASTIC - for plasterboards - has accelerated setting and shortened drying time, contains a special elasticity additive, negligible shrinkage, for materials sensitive to discoloration.

Adhesive methods: A: Installation with glue: **VHCT SILVER** and **VHCT ELASTIC**. Follow the adhesive manufacturer's recommendations, in particular with regard to the amount of water! It is recommended to glue dry boards to the so-called comb. a) the substrate must be load-bearing, free from loose fragments, cleaned, dusted off and degreased; b) the adhesive should cover at least 90% of the board surface in contact with the wall, gaps in the adhesive mass can lead to cracks in the plate; c) it is forbidden to make a "frame" with glue on the board, gluing the so-called method "on glue dabs"; d) it is not allowed to use glue thicknesses greater than 10 mm, with glue thickness greater than this may occur discoloration, deformation, cracks in the panel; e) it is not allowed to hit the boards down until obtaining permanent connection of the adhesive on the entire surface of the board with the wall; f) when fixing the board to the wall, make a minimum circular movement in order to set the board and pressing the glue to achieve the effect referred to in point B.e); g) panels with even temperature of panels should be installed in the room where they are installed; h) should be installed at temperatures between 5 and 25 degrees Celsius; i) the comb (trowel) should be applied in such a way that it does not cross, i.e. from left to right or top to bottom (or vice versa), but never both! B. Installation with glue: **VHCT CONCRETE CONNECT** a) the substrate must be load-bearing, free of loose fragments, cleaned, dusted off and degreased; b) a reinforced construction squeezer designed for thick masses should be used; c) the adhesive should be squeezed through the attached applicator with the 'V' notch, holding the cartridge at an angle of 90 ° to substrate; d) the adhesive should be applied in vertical, parallel strips at intervals of 20 cm (depending on the load); e) the glued elements should be joined together and pressed within 10 minutes from applying the glue; Walls made of gypsum plaster are not a stable surface, they are not suitable for installation and we recommend individual consultations with a specialist installer. An example of mounting on walls with plasterboard or with gypsum plaster: → anchored plaster board + GRUNT VHCT + VHCT CONCRETE CONNECT adhesive; → anchored OSB board + GRUNT VHCT + VHCT CONCRETE CONNECT adhesive. OSB board - remove the varnish by sanding. Use clean gloves during assembly. Any stains should be removed immediately after they appear, before drying. Install architectural concrete slabs with a gap of about 3-4 mm between the slabs, leaving a gap. Without fillings, keep dilatation from walls and ceiling. All

concrete works should be performed with diamond tools and drill bits should be used intended for use in concrete without impact. Acceptable cleaning agents: soapy water, fine polishing sandpaper 2000. Installation on the facades should be based on the design and good construction practice. The type of installation system is selected individually.

DECLARED PERFORMANCE:

Characteristic of the material: Concrete cladding element
Bending tensile strength: $\geq 2,0$ (MPa)

Density class - 2.2

Dimensional tolerances: Class A (± 3 mm)

Reaction to fire: Euroclass A1

Water vapor permeability coefficient: $\mu = 5/15$

Dimensional stability under the influence of moisture and drying: 0.60 mm/m. Shrinkage due to drying out (inside / outside): 0.34 mm/m.

Insulation against direct airborne sounds: Gross density 2200 kg / m³ ≤ Resistance to freezing and thawing with participation de-icing agent: < 0,6 kg/m².

All works should be performed in accordance with the construction practice. The above description has been prepared according to the state of the Art and the Producer's experience. Always check your own installation conditions on site. The technical data sheet does not replace the professional knowledge of the installer!

IMPORTANT INFORMATION

The information contained in this document results from our experience and previous knowledge, however, it is not binding. The conditions of a particular implementation should be judged onsite and considered on a case-by-case basis, e.g. wall type or place of installation, purpose and expected effects. In any case, the general principles of construction technique and the guidelines given by the material manufacturers must be observed. Installation should always be carried out by professionals experienced in this type of work. The manufacturer is not responsible for incorrect installation, not compliant with the information included in this Manual and in the documents referenced therein, including Adhesive Information Cards, in particular for the wrong assessment of the load capacity and the condition of the construction of the wall. By placing an order, the buyer declares that he is familiar with the features of architectural concrete, including those listed in this Manual and accepts them. The buyer also acknowledges and accepts the possibility of visual, aesthetic and colour differences in relation to marketing materials, photos, visualisations and samples.