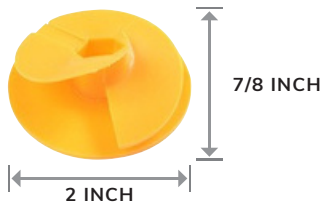
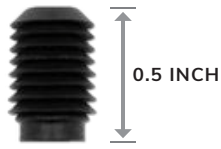






Product Specification Sheet

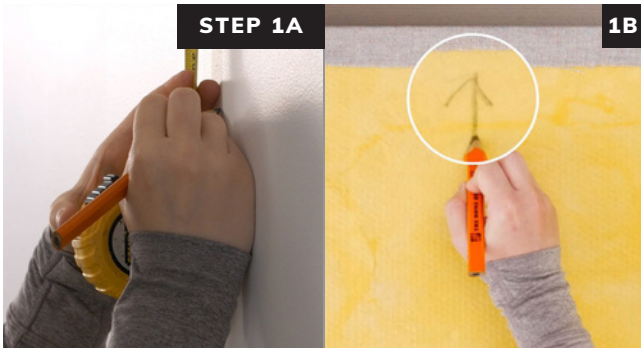
RSO1		Rotofast™ Snap-On Anchor	
BRAND NAME	Rotofast™	Rotofast™	Rotofast™
SUB-BRAND	Snap-On Anchor	Snap-On Anchor - Black Ratchet	Snap-On Anchor - Black Ratchet
PRODUCT TYPE	Acoustical Panel Anchor	Acoustical Panel Anchor	Acoustical Panel Anchor component
APPLICATION	To install fiberglass core acoustical panels to any substrate		
MATERIAL	Stabilized polypropylene plastic. Non-reactive, will not chemically react with fiberglass binders.		Stabilized polypropylene plastic.
PULL-OUT STRENGTH	45lb in 6lb / ft3 rigid fiberglass board		
SIZE			
		Rotofast™ Snap-On Anchor - Installation Tools	
	Installation Hex Tool	Reusable Marking Plug	
			



Step-by-Step Installation

(RSO1)  
Rotofast™  
Snap-On Anchor

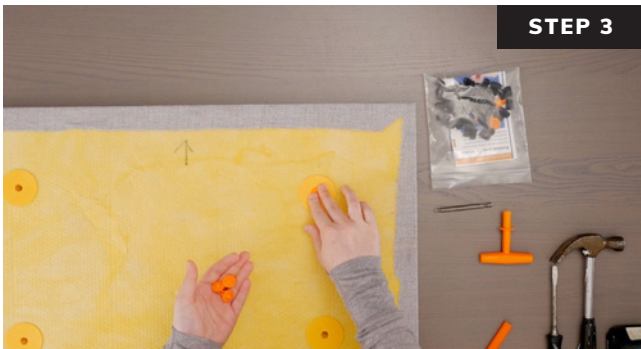
Rotofast Snap-On Anchors are a secure and fast solution for acoustical panel installation. See rotofast.com for the Rotofast Snap-On Anchor installation video.



Measure and mark the location where panel will be placed and mark the orientation on the back of the panel.



Screw Rotofast Snap-On Anchors into back of the panel using the Rotofast driver tool. Do not over-tighten.



Insert reusable marking plugs into the Snap-On anchors.

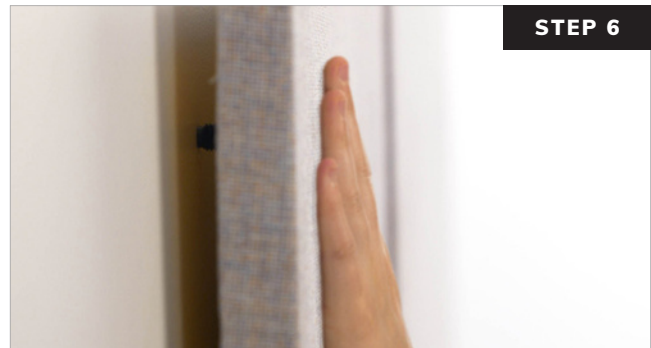


Push panel against wall to mark anchor locations.



Screw ratchets to wall at marked locations. Flat end of ratchet goes against the wall, curved end faces out.

#8 screws recommended  
\*Hollow wall anchors are recommended for drywall applications.



Firmly strike panel onto ratchets to complete the installation.

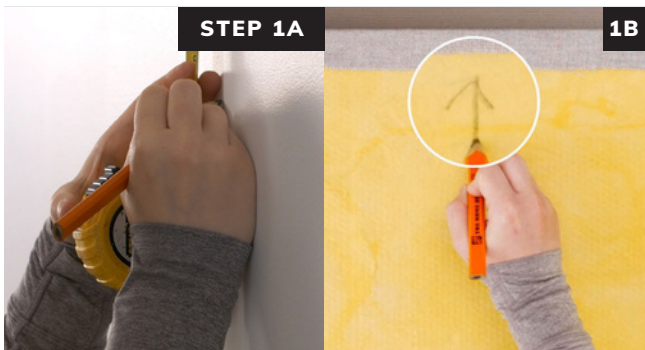
Ask your panel manufacturer or Rotofast representative for recommended anchor locations and quantities per panel.



Step-by-Step Installation

(RS01)  
**Rotofast™  
 Snap-On Anchor**  
 ALTERNATE METHOD

Rotofast Snap-On Anchors are a secure and fast solution for acoustical panel installation. See rotofast.com for the Rotofast Snap-On Anchor Alternate Method installation video.



Measure and mark the location where panel will be placed and mark the orientation on the back of the panel.



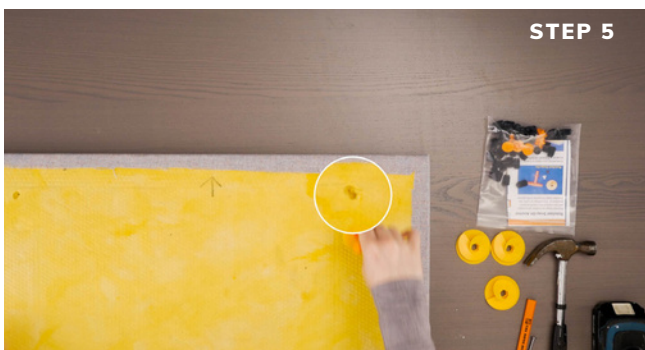
Mark the locations on the wall where the black ratchets will be installed in Step 3. For help with the number and placement of anchors, contact Rotofast.



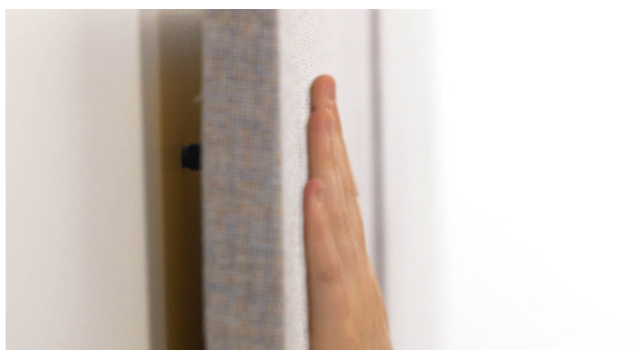
Screw black ratchets to wall at marked locations using the correct fastener for your substrate. Flat end of ratchet goes against the wall, curved end faces out.



Push the panel onto the black ratchets to make indentations in the panel core material.



Screw anchor into the back of the panel at the location where the black ratchets made indentations. Do not over-tighten.



Firmly strike panel onto ratchets to complete the installation. Ask your panel manufacturer or Rotofast representative for recommended anchor locations and quantities per panel.